

SAE Technical Standards Board Rules provide that: "This report is published by SAE to advance the state of technical and engineering sciences. The use of this report is entirely voluntary, and its applicability and suitability for any particular use, including any patent infringement arising therefrom, is the sole responsibility of the user."

SAE reviews each technical report at least every five years at which time it may be reaffirmed, revised, or cancelled. SAE invites your written comments and suggestions.

AS9679

FEDERAL SUPPLY CLASS
5306

NOTICE

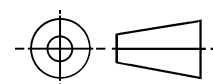
THIS DOCUMENT HAS BEEN TAKEN DIRECTLY FROM U.S. MILITARY SPECIFICATION MS9679B, AMENDMENT 1 AND CONTAINS ONLY MINOR EDITORIAL AND FORMAT CHANGES REQUIRED TO BRING IT INTO CONFORMANCE WITH THE PUBLISHING REQUIREMENTS OF SAE TECHNICAL STANDARDS. THE INITIAL RELEASE OF THIS DOCUMENT IS INTENDED TO REPLACE MS9679B, AMENDMENT 1. ANY PART NUMBERS ESTABLISHED BY THE ORIGINAL SPECIFICATION REMAIN UNCHANGED.

THE ORIGINAL MILITARY SPECIFICATION WAS ADOPTED AS AN SAE STANDARD UNDER THE PROVISIONS OF THE SAE TECHNICAL STANDARDS BOARD (TSB) RULES AND REGULATIONS (TSB 001) PERTAINING TO ACCELERATED ADOPTION OF GOVERNMENT SPECIFICATIONS AND STANDARDS. TSB RULES PROVIDE FOR (A) THE PUBLICATION OF PORTIONS OF UNREVISED GOVERNMENT SPECIFICATIONS AND STANDARDS WITHOUT CONSENSUS VOTING AT THE SAE COMMITTEE LEVEL, AND (B) THE USE OF THE EXISTING GOVERNMENT SPECIFICATION OR STANDARD FORMAT.

UNDER DEPARTMENT OF DEFENSE POLICIES AND PROCEDURES, ANY QUALIFICATION REQUIREMENTS AND ASSOCIATED QUALIFIED PRODUCTS LISTS ARE MANDATORY FOR DOD CONTRACTS. ANY REQUIREMENT RELATING TO QUALIFIED PRODUCTS LISTS (QPL'S) HAS NOT BEEN ADOPTED BY SAE AND IS NOT PART OF THIS SAE TECHNICAL DOCUMENT.

SAENORM.COM : Click to view the full PDF of as9679

THIRD ANGLE PROJECTION



ISSUED 2000-08

PREPARED BY SAE COMMITTEE E-25

PROCUREMENT SPECIFICATION: NONE

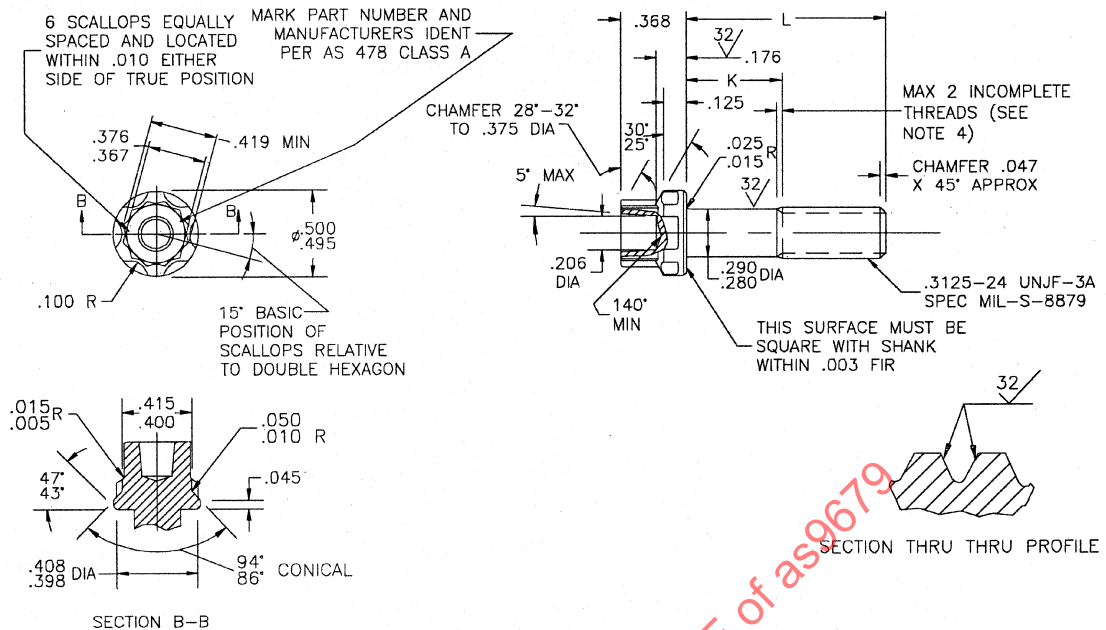
SAE The Engineering Society
For Advancing Mobility
Land Sea Air and Space®
INTERNATIONAL
400 Commonwealth Drive, Warrendale, PA 15096-0001

AEROSPACE STANDARD

BOLT, MACHINE - CRES, AMS 5731, DOUBLE
HEXAGON, EXTENDED WASHER HEAD, CUP
WASHER LOCKED, .375-24 UNJF-3A

AS9679
SHEET 1 OF 3

AS9679



FSC 5306

PART NUMBER	L	K	APPROX WEIGHT LB/100	PART NUMBER	L	K	APPROX WEIGHT LB/100	PART NUMBER	L	K	APPROX WEIGHT LB/100
MS9679-02	.500	.088-.108	2.79	MS9679-18	1.500	.440-.500	5.48	MS9679-39	3.875	2.815-2.875	11.90
MS9679-03	.562	.088-.108	2.95	MS9679-19	1.562	.502-.562	5.65	MS9679-40	4.000	2.940-3.000	12.23
MS9679-04	.625	.088-.108	3.11	MS9679-20	1.625	.565-.625	5.82	MS9679-41	4.125	3.065-3.125	12.56
MS9679-05	.688	.088-.108	3.27	MS9679-21	1.688	.628-.688	5.99	MS9679-42	4.250	3.190-3.250	12.89
MS9679-06	.750	.088-.108	3.44	MS9679-22	1.750	.690-.750	6.16	MS9679-43	4.375	3.315-3.375	13.22
MS9679-07	.812	.088-.108	3.66	MS9679-23	1.875	.815-.875	6.50	MS9679-44	4.500	3.440-3.500	13.65
MS9679-08	.875	.088-.108	3.77	MS9679-24	2.000	.940-1.000	6.84	MS9679-45	4.625	3.565-3.625	13.99
MS9679-09	.938	.088-.108	3.94	MS9679-25	2.125	1.065-1.125	7.18	MS9679-46	4.750	3.690-3.750	14.32
MS9679-10	1.000	.088-.108	4.11	MS9679-26	2.250	1.190-1.250	7.52	MS9679-47	4.875	3.815-3.875	14.65
MS9679-11	1.062	.088-.108	4.28	MS9679-27	2.375	1.313-1.375	7.85	MS9679-48	5.000	3.940-4.000	14.99
MS9679-12	1.125	.088-.125	4.46	MS9679-28	2.500	1.440-1.500	8.19	MS9679-49	5.125	4.065-4.125	15.33
MS9679-13	1.188	.128-.188	4.62	MS9679-29	2.625	1.565-1.625	8.53	MS9679-50	5.250	4.190-4.250	15.66
MS9679-14	1.250	.190-.250	4.79	MS9679-30	2.750	1.690-1.750	8.87	MS9679-51	5.375	4.315-4.375	15.99
MS9679-15	1.312	.252-.312	4.96	MS9679-31	2.875	1.815-1.875	9.22	MS9679-52	5.500	4.440-4.500	16.32
MS9679-16	1.375	.315-.375	5.14	MS9679-32	3.000	1.940-2.000	9.56	MS9679-53	5.625	4.565-4.625	16.65
MS9679-17	1.438	.378-.438	5.32	MS9679-33	3.125	2.065-2.125	9.89	MS9679-54	5.750	4.690-4.750	16.99
				MS9679-34	3.250	2.190-2.250	10.24	MS9679-55	5.875	4.815-4.875	17.33
				MS9679-35	3.375	2.315-2.375	10.57	MS9679-56	6.000	4.940-5.000	17.67
				MS9679-36	3.500	2.440-2.500	10.91				
				MS9679-37	3.625	2.565-2.625	11.23				
				MS9679-38	3.750	2.690-2.750	11.58				