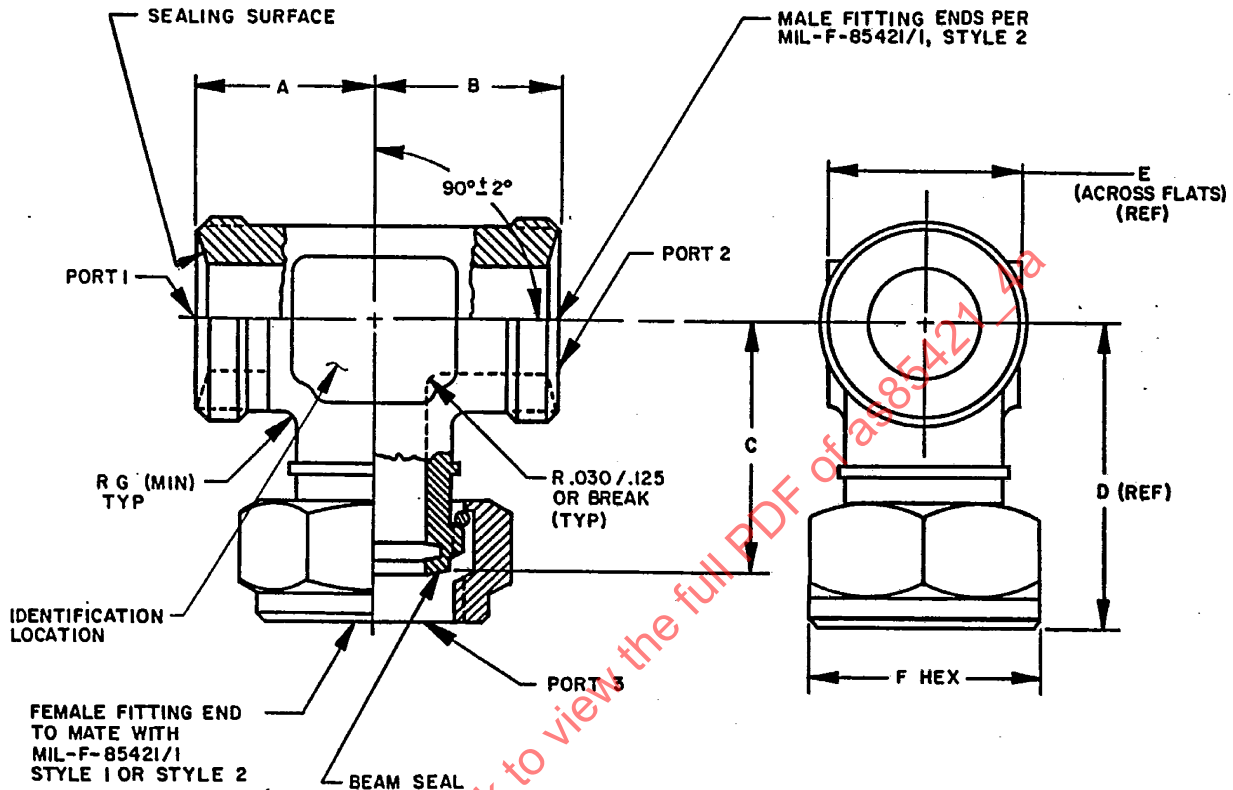


REV.
A

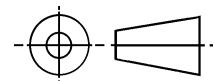
AS85421/4

FEDERAL SUPPLY CLASS
4730

THE REQUIREMENTS FOR ACQUIRING THE PRODUCT DESCRIBED HEREIN SHALL CONSIST OF THIS SPECIFICATION SHEET AND THE ISSUE OF THE FOLLOWING SPECIFICATION LISTED IN THAT ISSUE OF THE DEPARTMENT OF DEFENSE INDEX OF SPECIFICATIONS AND STANDARDS (DODISS) SPECIFIED IN THE SOLICITATION: MIL-F-85421.



THIRD ANGLE PROJECTION



PREPARED BY SAE COMMITTEE G-3

PROCUREMENT SPECIFICATION: AS85421

SAE The Engineering Society
For Advancing Mobility
Land Sea Air and Space
INTERNATIONAL
400 Commonwealth Drive, Warrendale, PA 15096-0001

AEROSPACE STANDARD

FITTING, TEE, REDUCER AND NON-REDUCER,
BEAM SEAL, 3000/4000 PSI, MALE ON RUN,
SWIVEL NUT ON BRANCH

AS85421/4
SHEET 1 OF 3

**REV.
A**

REV.
A

AS85421/4

TABLE I. DIMENSIONAL DATA

Port (1)	Port (2)	Port (3)	A	B	C	D (Ref)	E (Ref)	F	G Rad (Min)	Wt Lbs (Max)	
										Ti	Cres
04	04	04	.684	.684	.808	1.014	.500	.562	+.003 -.004	.042	
04	04	06	.684	.684	.945	1.178	.500	.688		.042	.058 .102
06	06	04	.704	.704	.808	1.014	.500	.562		.042	.063 .110
06	06	06	.704	.704	.945	1.178	.500	.688		.042	
06	06	08	.811	.811	1.045	1.294	.562	.875		.070	.103 .183
06	06	10	.878	.878	1.178	1.485	.688	1.000		.070	.116 .204
06	04	08	.811	.791	1.045	1.294	.562	.875		.070	.098 .173
08	04	06	.824	.791	.945	1.178	.562	.688		.070	.097 .172
08	08	08	.824	.824	1.045	1.294	.562	.875		.070	
10	10	10	.955	.955	1.178	1.485	.875	1.000		.098	
12	12	10	1.062	1.062	1.178	1.485	.875	1.000		.098	.226 .409
12	12	12	1.062	1.062	1.316	1.659	.875	1.125		.098	
16	10	10	1.246	1.158	1.275	1.582	1.125	1.000	+.016	.098	.204 .360

REQUIREMENTS:

- Materials: Titanium Alloy } See procurement
Corrosion Resistant Steel } specification
- Finish: Titanium: Fluoride phosphate coat per AMS 2486.
Corrosion Resistant Steel: Surface shall be treated and passivated per QQ-P-35.

NOTES:

- Dimensions are in inches. Unless otherwise specified, tolerances are: decimals $\pm .015$.
- Remove all burrs and break all sharp edges.
- All machined surfaces shall be smooth to 125 microinches R_a per ANSI/ASME B46.1 unless otherwise specified.

AEROSPACE STANDARD

FITTING, TEE, REDUCER AND NON-REDUCER,
BEAM SEAL, 3000/4000 PSI, MALE ON RUN,
SWIVEL NUT ON BRANCH

AS85421/4
SHEET 2 OF 3

REV.
A