

SAE Executive Standards Committee Rules provide that: "This report is published by SAE to advance the state of technical and engineering sciences. The use of this report is entirely voluntary, and its applicability and suitability for any particular use, including any patent infringement arising therefrom, is the sole responsibility of the user."

SAE reviews each technical report at least every five years at which time it may be revised, reaffirmed, stabilized, or cancelled. SAE invites your written comments and suggestions.

REV.
C

AS85049™/76

FEDERAL SUPPLY CLASS
5935

RATIONALE

REVISION IS REQUIRED TO ADD TEFLON WASHER MATERIAL REQUIREMENT, TO IMPROVE DRAWING QUALITY, TO REMOVE THE "ZZ" BREAKOUT VIEW AND ADD THE SAFETY WIRE HOLE REQUIREMENT TO THE MAIN FIGURE, TO UPDATE FINISH RESTRICTION WORDING, AND TO UPDATE DOCUMENT FORMAT TO LATEST SAE GUIDELINES.

NOTICE

THE COMPLETE REQUIREMENTS FOR PROCURING THE PRODUCT DESCRIBED HEREIN SHALL CONSIST OF THIS DOCUMENT AND THE LATEST ISSUE OF AS85049.

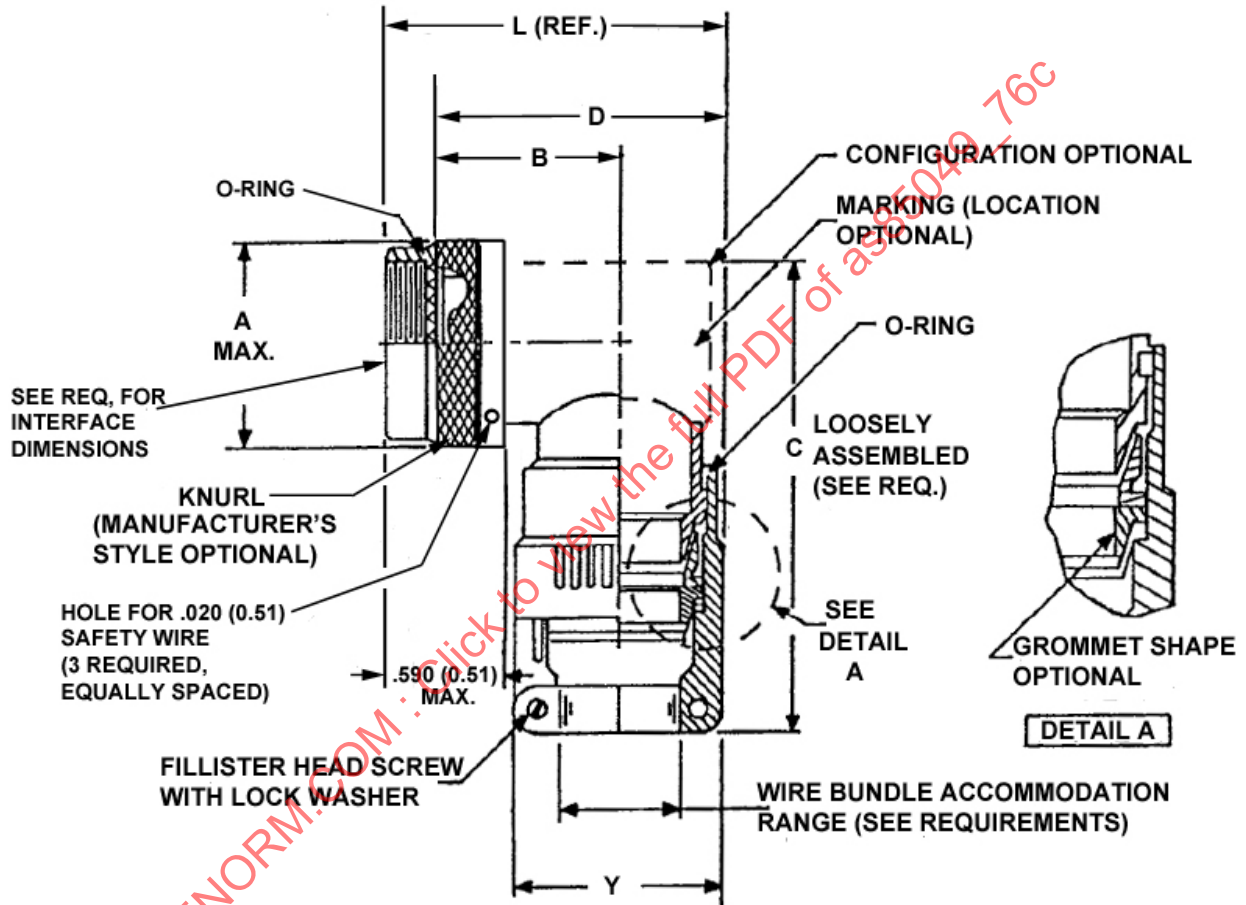
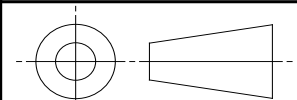


FIGURE 1 – ACCESSORY CONFIGURATION AND DIMENSIONS

For more information on this standard, visit

<https://www.sae.org/standards/content/AS85049/76C/>

THIRD ANGLE PROJECTION



CUSTODIAN: AE-8/AE-8C1

PROCUREMENT SPECIFICATION: AS85049



AEROSPACE STANDARD

(R) CONNECTOR ACCESSORIES, ELECTRICAL, BACKSHELL,
ENVIRONMENTAL, 90°, SHIELD TERMINATION,
CATEGORY 2B, NONSELF-LOCKING
(MIL-DTL-38999 SERIES I AND II CONNECTORS)

AS85049™/76
SHEET 1 OF 3

REV.
C

Copyright © 2021 SAE International

All rights reserved. No part of this publication may be reproduced, stored in a retrieval system or transmitted, in any form or by any means, electronic, mechanical, photocopying, recording, or otherwise, without the prior written permission of SAE.

TO PLACE A DOCUMENT ORDER: Tel: 877-606-7323 (inside USA and Canada)
Fax: 724-776-0790

Tel: +1 724-776-4970 (outside USA)
Email: CustomerService@sae.org

SAE WEB ADDRESS: <http://www.sae.org>

ISSUED 2000-05 REVISED 2016-06 REAFFIRMED 2021-03

TABLE 1 - CONNECTOR SHELL SIZE AND CLAMP SIZE

SHELL SIZE	FITS CONNECTOR SHELL SIZE		CLAMP SIZE (SEE TABLE 2 AND REQUIREMENTS)	A MAX. DIA. OF COUPLING RING	B ±0.156	C ±0.188	D MAX.	L REF.
	SERIES I	SERIES II						
08	09	08	01 THROUGH 02	.75 (19.1)	0.532 (13.51)	3.267 (82.98)	1.19 (30.2)	1.43 (36.3)
10	11	10	01 THROUGH 03	.85 (21.6)	0.627 (15.93)	3.387 (86.03)	1.34 (34.0)	1.58 (40.1)
12	13	12	02 THROUGH 04	1.00 (25.4)	0.642 (16.31)	3.407 (86.54)	1.44 (36.6)	1.68 (42.7)
14	15	14	02 THROUGH 05	1.15 (29.2)	0.719 (18.26)	3.477 (88.32)	1.50 (38.1)	1.74 (44.2)
16	17	16	02 THROUGH 06	1.25 (31.8)	0.774 (19.66)	3.567 (90.60)	1.63 (41.4)	1.87 (47.5)
18	19	18	03 THROUGH 07	1.40 (35.6)	0.854 (21.69)	3.737 (94.92)	1.76 (44.7)	2.00 (50.8)
20	21	20	03 THROUGH 08	1.55 (39.4)	0.899 (22.83)	3.737 (94.92)	1.88 (47.8)	2.12 (53.8)
22	23	22	03 THROUGH 09	1.65 (41.9)	1.009 (25.63)	3.847 (97.71)	2.04 (51.8)	2.28 (57.9)
24	25	24	04 THROUGH 10	1.85 (47.0)	1.024 (26.01)	3.847 (97.71)	2.13 (54.1)	2.37 (60.2)

TABLE 2 - CLAMP SIZE AND DIMENSIONS

CLAMP SIZE	WIRE BUNDLE ACCOMMODATION RANGE (SEE REQUIREMENTS)		Y DIM. MAX.
	MIN.	MAX.	
01	.062 (1.57)	.125 (3.18)	.80 (20.3)
02	.125 (3.18)	.250 (6.35)	1.00 (25.4)
03	.250 (6.35)	.375 (9.53)	1.10 (27.9)
04	.375 (9.53)	.500 (12.70)	1.20 (30.5)
05	.500 (12.70)	.625 (15.88)	1.25 (31.8)
06	.625 (15.88)	.750 (19.05)	1.40 (35.6)
07	.750 (19.05)	.875 (22.23)	1.50 (38.1)
08	.875 (22.23)	1.000 (25.40)	1.65 (41.9)
09	1.000 (25.40)	1.125 (28.58)	1.75 (44.5)
10	1.125 (28.58)	1.250 (31.75)	1.90 (48.3)

REQUIREMENTS: ALL REQUIREMENTS SHALL CONSIST OF THIS SPECIFICATION AND THE LATEST ISSUE OF AS85049.

1. DESIGN AND CONSTRUCTION:

ACCESSORIES SHALL BE DESIGNED IN ACCORDANCE WITH FIGURE 1 AND TABLES 1 AND 2. DIMENSIONS ARE IN INCHES AND APPLY AFTER PLATING. METRIC EQUIVALENTS ARE IN PARENTHESIS, ARE GIVEN FOR GENERAL INFORMATION ONLY AND ARE BASED UPON 1 INCH = 25.4 MILLIMETERS. LOOSELY ASSEMBLED IS DEFINED AS THE CLAMP TIGHTENED TO THE AS85049/76 CONNECTOR ACCESSORY BODY TWO FULL THREAD LENGTHS.


2. INTERFACE DIMENSIONS: IN ACCORDANCE WITH AS85049, FIGURE 2.

3. SEE TABLE 1 FOR THE CLAMP SIZE AVAILABLE WITH EACH ACCESSORY SHELL SIZE. SEE TABLE 2 FOR WIRE BUNDLE ACCOMMODATION RANGE FOR EACH CLAMP SIZE. WIRE BUNDLE ACCOMMODATION RANGE IS NOT A CLAMP MEASUREMENT, BUT INDICATES THE ACTUAL RANGE THE CLAMP AND SEALING MEMBER MUST ACCOMMODATE. THE GROMMET SEALING DIMENSION SHALL MEET THE MAXIMUM WIRE BUNDLE ACCOMMODATION RANGE DIMENSION OF THE DESIGNATED CLAMP.

4. COUPLING NUT SHALL BE CAPTIVATED TO THE ADAPTER BODY AND FREE TO ROTATE.

5. TERMINATION METHOD: SINGLE SHIELD, SINGLE CONE.

6. SIMPLIFIED ASSEMBLY INSTRUCTIONS SHALL BE SHIPPED WITH THE UNIT PACKAGE.

	AEROSPACE STANDARD	AS85049™/76 SHEET 2 OF 3	REV. C
	(R) CONNECTOR ACCESSORIES, ELECTRICAL, BACKSHELL, ENVIRONMENTAL, 90°, SHIELD TERMINATION, CATEGORY 2B, NONSELF-LOCKING (MIL-DTL-38999 SERIES I AND II CONNECTORS)		