

AS81659/72

NOTICE

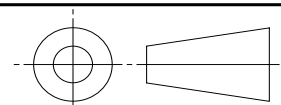
THIS DOCUMENT HAS BEEN TAKEN DIRECTLY FROM U.S. MILITARY SPECIFICATION MIL-C-81659/72 AND CONTAINS ONLY MINOR EDITORIAL AND FORMAT CHANGES REQUIRED TO BRING IT INTO CONFORMANCE WITH THE PUBLISHING REQUIREMENTS OF SAE TECHNICAL STANDARDS. THE INITIAL RELEASE OF THIS DOCUMENT IS INTENDED TO REPLACE MIL-C-81659/72. ANY PART NUMBERS ESTABLISHED BY THE ORIGINAL SPECIFICATION REMAIN UNCHANGED.

THE ORIGINAL MILITARY SPECIFICATION WAS ADOPTED AS AN SAE STANDARD UNDER THE PROVISIONS OF THE SAE TECHNICAL STANDARDS BOARD (TSB) RULES AND REGULATIONS (TSB 001) PERTAINING TO ACCELERATED ADOPTION OF GOVERNMENT SPECIFICATIONS AND STANDARDS. TSB RULES PROVIDE FOR (A) THE PUBLICATION OF PORTIONS OF UNREVISED GOVERNMENT SPECIFICATIONS AND STANDARDS WITHOUT CONSENSUS VOTING AT THE SAE COMMITTEE LEVEL, AND (B) THE USE OF THE EXISTING GOVERNMENT SPECIFICATION OR STANDARD FORMAT.

UNDER DEPARTMENT OF DEFENSE POLICIES AND PROCEDURES, ANY QUALIFICATION REQUIREMENTS AND ASSOCIATED QUALIFIED PRODUCTS LISTS ARE MANDATORY FOR DOD CONTRACTS. ANY REQUIREMENT RELATING TO QUALIFIED PRODUCTS LISTS (QPL'S) HAS NOT BEEN ADOPTED BY SAE AND IS NOT PART OF THIS TECHNICAL REPORT.

SAENORM.COM : Click to view the full PDF of as81659-72

THIRD ANGLE PROJECTION



CUSTODIAN: AE-8/AE-8C1

PROCUREMENT SPECIFICATION: MIL-C-81659

SAE Aerospace
An SAE International Group

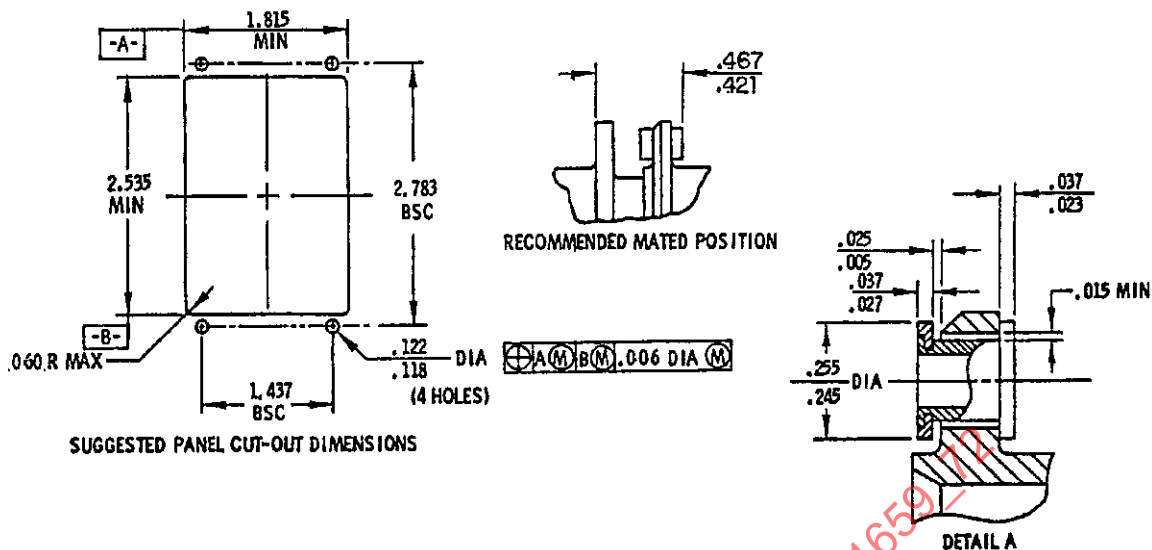
AEROSPACE STANDARD

CONNECTORS, ELECTRICAL, RECTANGULAR, RECEPTACLE, CRIMP CONTACTS, (DUAL INSERT, TYPE IV, CLASS 1, (-65°C TO +125°C), SERIES 2, SHELL DESIGNATOR A, FLOAT MOUNTING)

AS81659/72
SHEET 1 OF 4

ISSUED 2004-05

FOR CONNECTOR DRAWING SEE PAGE 2.



INCHES	MM	INCHES	MM	INCHES	MM	INCHES	MM	INCHES	MM
.005	.13	.050	1.27	.178	4.52	.928	23.57	1.765	44.83
.006	.15	.055	1.40	.198	5.03	.948	24.08	1.815	46.10
.015	.38	.060	1.52	.245	6.22	1.367	34.72	1.985	50.42
.023	.58	.065	1.65	.255	6.48	1.387	35.23	2.015	51.18
.025	.64	.093	2.36	.421	10.69	1.3915	35.34	2.485	63.12
.027	.69	.117	2.97	.467	11.86	1.427	36.25	2.535	64.38
.037	.94	.118	3.00	.521	13.23	1.437	36.50	2.783	70.69
.040	1.02	.122	3.10	.541	13.74	1.447	36.75	3.060	77.72
.047	1.19	.133	3.38	.7185	18.25	1.725	43.82	3.090	78.49

NOTES:

1. DIMENSIONS ARE IN INCHES.
2. METRIC EQUIVALENTS (TO THE NEAREST .01 MM) ARE GIVEN FOR GENERAL INFORMATION ONLY AND ARE BASED UPON 1 INCH = 25.4 MM.
3. DIMENSIONS APPLY AFTER PLATING.
4. NORMAL (01) POLARIZATION POSITION SHOWN. FOR ALTERNATE POSITIONS SEE MIL-C-81659.
5. FOR LOCATION OF DATUMS G AND H REFER TO MIL-C-81659, FIGURE 7.
6. THIS CONNECTOR DOES NOT HAVE A WIRE SEALING GROMMET.

