

REV.
D

AS7928™/5

RATIONALE

LIMITED SCOPE REQUIRED TO CORRECT SPLICE CRIMP TOOLS IN TABLE 2.

NOTICE

THE COMPLETE REQUIREMENTS FOR PROCURING THE PRODUCT DESCRIBED HEREIN SHALL CONSIST OF THIS DOCUMENT AND THE LATEST ISSUE OF AS7928.

FOR U.S. NAVY AND AIR FORCE DEPARTMENTS, AS7928/5 SHALL NOT BE USED (REFER TO AS81824).

FEDERAL SUPPLY CLASS
5940

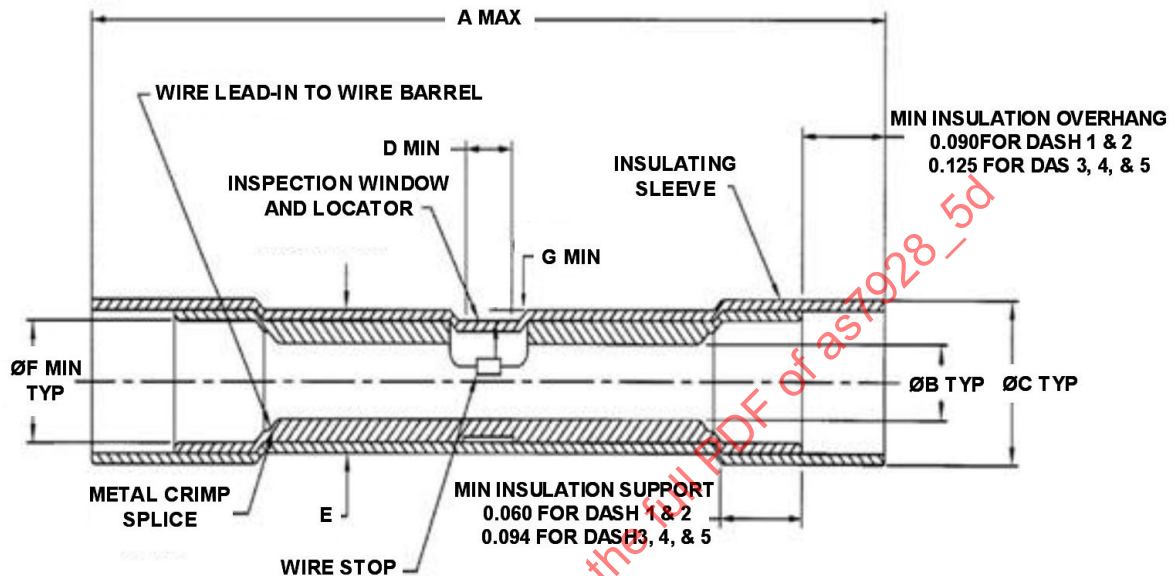


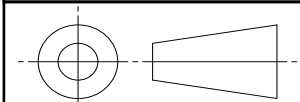
FIGURE 1 - SPLICE CONSTRUCTION

TABLE 1 - DIMENSIONS

DASH NO.	WIRE RANGE	A MAX	B	C	D MIN	E	F MIN	G MIN	INSULATING SLEEVE TRANSPARENT COLOR
-1	26-24	.890 (22.6)	.033/.027 (0.84/0.69)	.160/.125 (4.07/3.18)	.060 (1.52)	.150/.125 (3.81/3.18)	.070 (1.78)	.025 (0.64)	YELLOW
-2	24-20	1.035 (26.29)	.055/.043 (1.40/1.09)	.170/.135 (4.32/3.43)	.060 (1.52)	.165/.135 (4.19/3.43)	.100 (25.4)	.030 (0.76)	CLEAR
-3	22-18	1.300 (33.02)	.073/.052 (1.85/1.32)	.220/.160 (5.59/4.07)	.080 (2.03)	.210/.160 (5.33/4.07)	.110 (2.79)	.050 (1.27)	RED
-4	16-14	1.300 (33.02)	.095/.081 (2.41/2.06)	.260/.180 (4.07/4.57)	.080 (2.03)	.250/.180 (6.25/4.57)	.140 (3.56)	.050 (1.27)	BLUE
-5	12-10	1.700 (43.18)	.139/.129 (3.53/3.28)	.320/.250 (8.13/6.25)	.110 (2.79)	.300/.250 (7.62/6.25)	.200 (5.08)	.050 (1.27)	YELLOW

For more information on this standard, visit
<https://www.sae.org/standards/content/AS7928/5D>

THIRD ANGLE PROJECTION



CUSTODIAN: AE-8C2

PROCUREMENT SPECIFICATION: AS7928



AEROSPACE STANDARD

TERMINALS, LUG AND SPLICES, CONDUCTOR,
CRIMP STYLE, SPLICE, ELECTRIC
(PERMANENT, TYPE II, CLASS 1)
FOR 105 °C TOTAL CONDUCTOR TEMPERATURE

AS7928™/5
SHEET 1 OF 3

REV.
D

REQUIREMENTS: ALL REQUIREMENTS SHALL CONSIST OF THIS DOCUMENT AND THE LATEST ISSUE OF AS7928.

1. CONFIGURATION:

DIMENSIONS ARE IN INCHES (SEE TABLE 1). METRIC UNITS SHOWN IN PARENTHESES ARE BASED ON 25.4 MM PER INCH. IN THE EVENT OF A CONFLICT, ENGLISH UNITS TAKE PRECEDENCE.

DIMENSION B IS DETERMINED AS THE AVERAGE OF TWO DIAMETERS MEASURED AT RIGHT ANGLES.

CONTOUR MAY VARY FROM THAT SHOWN, WITHIN SPECIFIED DIMENSIONS, BUT WIRE LEAD-IN TO WIRE BARREL SHALL BE PROVIDED.

INSULATION SUPPORT AND METAL CRIMP SPLICE MAY BE MULTIPLE PIECE CONSTRUCTION.

THE INSPECTION WINDOW AND LOCATOR SHALL PROVIDE A POSITIVE MEANS OF POSITIONING SPLICE IN THE APPLICABLE CRIMPING TOOL.

2. MATERIALS:

METAL CRIMP SPLICE AND INSULATION SUPPORT DEVICE SHALL BE A COPPER OR COPPER ALLOY MATERIAL, SHALL HAVE ADEQUATE ELECTRICAL CONDUCTIVITY, AND SHALL BE SUFFICIENTLY STRONG TO RESIST CRACKING AFTER FORMING AND CRIMPING (REFER TO AS7928).

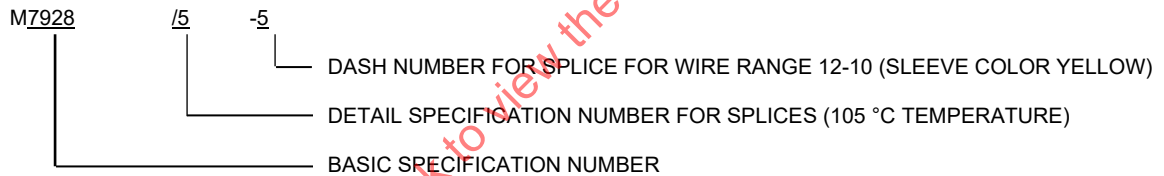
INSULATING SLEEVE MATERIAL SHALL BE AS SPECIFIED IN AS7928.

FINISH SHALL BE TIN PLATED AS SPECIFIED IN AS7928 (SEE APPLICATION NOTE).

3. IDENTIFICATION OF PRODUCT:

IDENTIFICATION OF PRODUCT SHALL BE IN ACCORDANCE WITH AS7928. MANUFACTURER TRADEMARK OR SYMBOL SHALL BE LISTED IN AIR1351.

PART NUMBER:



4. CRIMPING TOOLS:

CRIMPING TOOLS SHALL BE AS SPECIFIED TABLE 2.

TABLE 2 - SPLICE CRIMPING TOOLS

PART NUMBER	WIRE RANGE	CRIMP TOOL	TOOL DIE	DIE COLOR DESIGNATION
M7928/5-1	26-24	M22520/5-01	M22520/5-101	WHITE
		M22520/10-01	M22520/10-102	
M7928/5-2	24-20	M22520/5-01	M22520/5-101	
		M22520/10-01	M22520/10-102	
M7928/5-3	22-18	M22520/5-01	M22520/5-100	RED
			M22520/5-101 (WIRE SIZE 22-20 ONLY)	
		M22520/10-01	M22520/10-101	WHITE
M7928/5-4	16-14	M22520/5-01	M22520/5-100	BLUE
			M22520/5-107	WHITE
		M22520/10-01	M22520/10-101	
M7928/5-5	12-10	M22520/5-01	M22520/5-100	YELLOW
			M22520/5-108	
		M22520/10	M22520/10-100	
		M22520/41-01 FIX DIE TOOL	N/A	N/A

	AEROSPACE STANDARD	AS7928™/5 SHEET 2 OF 3	REV. D
	TERMINALS, LUG AND SPLICES, CONDUCTOR, CRIMP STYLE, SPLICE, ELECTRIC (PERMANENT, TYPE II, CLASS 1) FOR 105 °C TOTAL CONDUCTOR TEMPERATURE		