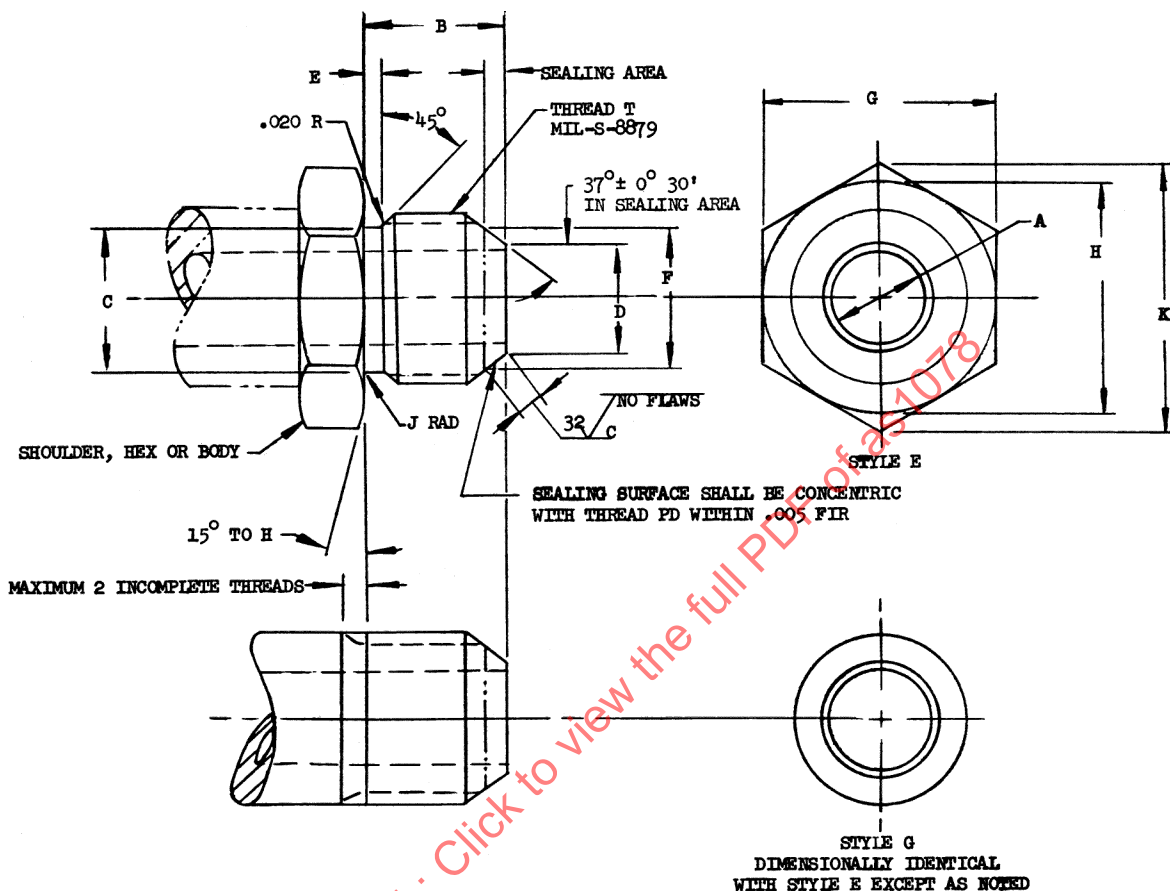


RATIONALE

THIS DOCUMENT HAS BEEN REAFFIRMED TO COMPLY WITH THE SAE 5-YEAR REVIEW POLICY.



1. THIS FITTING END IS INTENDED TO SEAL ONLY WITHIN INDICATED AREA BY METAL-TO-METAL CONTACT AGAINST MATING SURFACE. SEE AS 930 FOR FITTING END DESIGNED TO SEAL IN AREA OF THREAD UNDERCUT AND ADJACENT SURFACE BY MEANS OF A PREFORMED PACKING.
2. SEALING SURFACES SHALL BE STRAIGHT TO CONVEX WITHIN .0005. CONCAVE AREAS PROHIBITED.
3. ALL DIAMETERS SHALL BE CONCENTRIC WITHIN .010 FIR UNLESS OTHERWISE SPECIFIED.
4. SURFACE TEXTURE: USAS B.46.1-1962. UNLESS OTHERWISE SPECIFIED SURFACES TO BE 125 MICROINCHES.
5. REMOVE BURRS AND SHARP EDGES.
6. DIMENSIONS IN INCHES. UNLESS OTHERWISE SPECIFIED, TOLERANCES: LINEAR DIMENSIONS ±.010, ANGULAR DIMENSIONS ±5°.
7. THIS IS A DESIGN STANDARD. NOT TO BE USED AS A PART NUMBER.

PREPARED BY SAE COMMITTEE E-25, GENERAL STANDARDS FOR AEROSPACE PROPULSION SYSTEMS

SAE Aerospace
An SAE International Group**AEROSPACE STANDARD**FITTING END - FLARED TUBE CONNECTION,
EXTENDED THREAD**AS1078**
SHEET 1 OF 2

ISSUED 1969-03 REAFFIRMED 2006-05