

NFPA 90B

Warm Air Heating and Air Conditioning Systems 1984



NOTICE

All questions or other communications relating to this document should be sent only to NFPA Headquarters, addressed to the attention of the Committee responsible for the document.

For information on the procedures for requesting Technical Committees to issue Formal Interpretations, proposing Tentative Interim Amendments, proposing amendments for Committee consideration, and appeals on matters relating to the content of the document, write to the Secretary, Standards Council, National Fire Protection Association, Batterymarch Park, Quincy, MA 02269.

A statement, written or oral, that is not processed in accordance with Section 16 of the Regulations Governing Committee Projects shall not be considered the official position of NFPA or any of its Committees and shall not be considered to be, nor be relied upon as, a Formal Interpretation.

Users of this document should consult applicable Federal, State and local laws and regulations. NFPA does not, by the publication of this document, intend to urge action which is not in compliance with applicable laws and this document may not be construed as doing so.

Policy Adopted by NFPA Board of Directors on December 3, 1982

The Board of Directors reaffirms that the National Fire Protection Association recognizes that the toxicity of the products of combustion is an important factor in the loss of life from fire. NFPA has dealt with that subject in its technical committee documents for many years.

There is a concern that the growing use of synthetic materials may produce more or additional toxic products of combustion in a fire environment. The Board has, therefore, asked all NFPA technical committees to review the documents for which they are responsible to be sure that the documents respond to this current concern. To assist the committees in meeting this request, the Board has appointed an advisory committee to provide specific guidance to the technical committees on questions relating to assessing the hazards of the products of combustion.

Licensing Provision — This document is copyrighted by the National Fire Protection Association (NFPA).

1. Adoption by Reference — Public authorities and others are urged to reference this document in laws, ordinances, regulations, administrative orders or similar instruments. Any deletions, additions and changes desired by the adopting authority must be noted separately. Those using this method are requested to notify the NFPA (Attention: Secretary, Standards Council) in writing of such use. The term "adoption by reference" means the citing of title and publishing information only.

2. Adoption by Transcription — **A.** Public authorities with lawmaking or rule-making powers only, upon written notice to the NFPA (Attention: Secretary, Standards Council), will be granted a royalty-free license to print and republish this document in whole or in part, with changes and additions, if any, noted separately, in laws, ordinances, regulations, administrative orders or similar instruments having the force of law, provided that: (1) due notice of NFPA's copyright is contained in each law and in each copy thereof; and, (2) that such printing and republication is limited to numbers sufficient to satisfy the jurisdiction's lawmaking or rulemaking process. **B.** Once this NFPA Code or Standard has been adopted into law, all printings of this document by public authorities with lawmaking or rulemaking powers or any other persons desiring to reproduce this document or its contents as adopted by the jurisdiction in whole or in part, in any form, upon written request to NFPA (Attention: Secretary, Standards Council), will be granted a nonexclusive license to print, republish, and vend this document in whole or in part, with changes and additions, if any, noted separately provided that due notice of NFPA's copyright is contained in each copy. Such license shall be granted only upon agreement to pay NFPA a royalty. This royalty is required to provide funds for the research and development necessary to continue the work of NFPA and its volunteers in continually updating and revising NFPA standards. Under certain circumstances, public authorities with lawmaking or rulemaking powers may apply for and may receive a special royalty when the public interest will be served thereby.

All other rights, including the right to vend, are retained by NFPA.

(For further explanation, see the Policy Concerning the Adoption, Printing and Publication of NFPA Documents which is available upon request from the NFPA.)

Statement on NFPA Procedures

This material has been developed under the published procedures of the National Fire Protection Association, which are designed to assure the appointment of technically competent Committees having balanced representation. While these procedures assure the highest degree of care, neither the National Fire Protection Association, its members, nor those participating in its activities accepts any liability resulting from compliance or noncompliance with the provisions given herein, for any restrictions imposed on materials or processes, or for the completeness of the text.

NFPA has no power or authority to police or enforce compliance with the contents of this document and any certification of products stating compliance with requirements of this document is made at the peril of the certifier.

© 1984 NFPA, All Rights Reserved

Standard for the Installation of Warm Air Heating and Air Conditioning Systems

NFPA 90B-1984

1984 Edition of NFPA 90B

This edition of NFPA 90B, *Standard for the Installation of Warm Air Heating and Air Conditioning Systems*, was prepared by the Technical Committee on Air Conditioning, released by the Correlating Committee on Building Construction, and acted on by the National Fire Protection Association, Inc. at its Annual Meeting held May 21-24, 1984 in New Orleans, Louisiana. It was issued by the Standards Council on June 14, 1984, with an effective date of July 5, 1984, and supersedes all previous editions.

The 1984 edition of this standard has been approved by the American National Standards Institute.

Changes other than editorial are indicated by a vertical rule in the margin of the pages on which they appear. These lines are included as an aid to the user in identifying changes from the previous edition.

Origin and Development of NFPA 90B

This standard dates from 1899, when Committee attention was first given to blower and exhaust systems. Prior to 1936, the subject of air conditioning was covered in NFPA standards on blower systems. In 1937 it was decided to prepare a separate *Standard on Air Conditioning, Warm Air Heating and Ventilating Systems*. This standard was initially adopted in 1937 with subsequent amendments in 1938, 1939, 1940, 1942, 1950, 1952, 1955, 1956, 1960, 1961, 1963, 1964, 1965, 1968, 1971, 1973, 1976, 1980, and 1984.

For *Standard for the Installation of Air Conditioning and Ventilating Systems*, see NFPA 90A.

Committee on Building Construction

Correlating Committee

Donald W. Belles, *Chairman*
Madison, TN

John K. Bouchard, *Secretary*
National Fire Protection Assn.
(Nonvoting)

John G. Degenkolb, Glendale, CA
Kenneth A. Kander, M & M Protection Consultants
Harold E. Nelson, NBS, Center for Fire Research

Chester W. Schirmer, Schirmer Engineering Corp.
William A. Schmidt, U. S. Veterans Administration
Richard H. Solomon, Naperville, IL

Nonvoting

George W. Flach, City Hall, New Orleans, LA
Rep. NFPA National Electrical Code Committee

Jonas L. Morehart, U. S. Department of Health & Human Services
Rep. NFPA Safety to Life Committee

Technical Committee on

Air Conditioning

William A. Schmidt, *Chairman*
U.S. Veterans Admin.

J. Brooks Semple, *Secretary*
Smoke/fire Risk Mgmt Inc.
(Rep. ASHRAE)

Rudolph J. Adams, Air Balance Inc.
Rep. Air Movement & Control Assn. Inc.
Irwin A. Benjamin, Benjamin/Clarke Assoc. Inc.
Jack B. Buckley, I A Naman & Assoc. - Consulting Engineers
Thomas Campbell, Owens-Corning Fiberglas Corp.
Rep. Thermal Insulation Mfrs. Assn.
S. E. Egesdal, Honeywell Inc.
Rep. NEMA
John Bruce Ferguson, Rolf Jensen & Associates Inc.
Richard G. Gewain, American Iron & Steel Inst.
John H. Klote, Ctr. for Fire Research
Richard A. Kutina, American Gas Assn.
Edward T. Liston, New England Medical Ctr. Hospital
Rep. American Hospital Assn.

Richard E. Masters, Jaros Baum & Bolles
E. E. Miller, Industrial Risk Insurers
Lyman L. Parks, New Jersey Bell Telephone Co.
Herbert Phillips, Air-Conditioning & Refrigeration Inst.
Sylvester A. Sampson Jr., HHS/ROFEC
Raymond J. Seidensticker, IRM Insurance
John H. Stratton, SMACNA
Howard H. Summers Jr., Virginia State Fire Marshals Office
Rep. Fire Marshals Assn. of N. America
James R. Thiel, Underwriters Laboratories Inc.
Ralph E. Williams, St Luke's-Roosevelt Hosp. Ctr.
Rep. Greater NY Hosp. Assn.
Silvio R. Zuniga, Factory Mutual Research Corp.

Alternates

J. S. Barritt, Industrial Risk Insurers

(Alternate to E. E. Miller)

Delbert F. Boring Jr., American Iron & Steel Inst.

(Alternate to R. G. Gewain)

Forrest G. Hammaker, American Gas Assn. Laboratories

(Alternate to R. A. Kutina)

Vincent J. Hession, American Telephone & Telegraph Co.

(Alternate to L. L. Parks)

Winfield T. Irwin, CertainTeed Corp.

(Alternate to T. C. Campbell)

Robert Menacker, General Engineering Associates

(Alternate to J. B. Semple)

Donald Montgomery, DuMont Company

(Alternate to J. H. Stratton)

William R. Pauers, Johnson Controls Inc.

(Alternate to S. E. Egesdal)

Richard M. Plettner, Ruskin Manufacturing Co.

(Alternate to R. J. Adams)

C. B. Schram, Underwriters Laboratories Inc.

(Nonvoting NEC® Liaison)

(Alternate to J. R. Thiel)

Herbert C. Skarbek, Air-Conditioning & Refrigeration Inst.

(Alternate to H. Phillips)

Joseph G. Sprague, American Hospital Assn.

(Alternate to Edward T. Liston)

Nicholas L. Talbot, Improved Risk Mutuals

(Alternate to R. J. Seidensticker)

Nonvoting

Kenneth S. Lewison, NY Div of Housing & Community Renewal

(Alternate to B. Selekof)

Donald L. Moore, U.S. Dept of Housing & Urban Development

Bennett Selekof, NY Div of Housing & Community Renewal

This list represents the membership at the time the Committee was balloted on the text of this edition. Since that time, changes in the membership may have occurred.

NOTE: Membership on a Committee shall not in and of itself constitute an endorsement of the Association or any document developed by the Committee on which the member serves.

Contents

Chapter 1 General	90B- 5
1-1 Scope	90B- 5
1-2 Purpose	90B- 5
1-3 Definitions	90B- 5
Chapter 2 System Components	90B- 6
2-1 Supply Systems	90B- 6
2-2 Return Systems	90B- 7
2-3 Common Requirements	90B- 7
Chapter 3 Fire Integrity of Building Construction	90B- 9
3-1 Clearances to Combustible Material	90B- 9
3-2 Firestopping	90B-12
Chapter 4 Equipment, Wiring, and Controls	90B-12
4-1 Equipment	90B-12
4-2 Electric Wiring and Equipment	90B-13
4-3 Controls	90B-13
Chapter 5 Mandatory Referenced Publications	90B-14
Appendix A Informatory Referenced Publications	90B-14

Standard for the Installation of Warm Air Heating and Air Conditioning Systems

NFPA 90B-1984

For information on referenced publications, see Chapter 5 and Appendix A.

Chapter 1 General

1-1 Scope.¹ This standard applies to all systems for the movement of environmental air in structures which:

- (a) Serve one- or two-family dwellings, or
- (b) Serve spaces not exceeding 25,000 cu ft (708 m³) in volume in any occupancy.

Exception: Buildings of combustible construction over three stories in height are covered by NFPA 90A, Installation of Air Conditioning and Ventilating Systems (see Appendix A).

1-2 Purpose. This standard is intended to prescribe reasonable provisions based on minimum requirements for safety to life and property. Nothing in this standard is intended to prevent the use of methods or devices, provided that sufficient technical data is submitted to the authority having jurisdiction to demonstrate that the proposed method or device is equivalent in quality, strength, fire endurance, effectiveness, durability, and safety to that prescribed by this standard.

1-3 Definitions.

Air Filter. A device used to reduce or remove airborne solids from heating, ventilating, and air conditioning systems.

Approved. Acceptable to the "authority having jurisdiction."

NOTE: The National Fire Protection Association does not approve, inspect or certify any installations, procedures, equipment or materials nor does it approve or evaluate testing laboratories. In determining the acceptability of installations or procedures, equipment or materials, the authority having jurisdiction may base acceptance on compliance with NFPA or other appropriate standards. In the absence of such standards, said authority may require evidence of proper installation, procedure or use. The authority having jurisdiction may also refer to the listings or labeling practices of an organization concerned with product evaluations which is in a position to determine compliance with appropriate standards for the current production of listed items.

Authority Having Jurisdiction. The "authority having jurisdiction" is the organization, office or individual responsible for "approving" equipment, an installation, or a procedure.

NOTE: The phrase "authority having jurisdiction" is used in NFPA documents in a broad manner since jurisdictions and "approval" agencies vary as do their responsibilities. Where public safety is primary, the "authority having jurisdiction" may be a federal, state, local or other regional department or individual such as a fire chief, fire marshal, chief of a fire prevention bureau, labor department, health department, building official, electrical inspector, or others having statutory authority. For insurance purposes, an insurance inspection department, rating bureau, or other insurance company representative may be the "authority having jurisdiction." In many circumstances the property owner or his designated agent assumes the role of the "authority having jurisdiction"; at government installations, the commanding officer or departmental official may be the "authority having jurisdiction."

Central Warm Air Heating System. A heating system consisting of a heat exchanger with an outer casing or jacket, a solar collection system or an electric heating unit, connected to a supply system and a return system.

Combustible Material. Material made of or surfaced with wood, compressed paper, plant fibers or other material that will ignite and burn, whether flameproofed or not, or whether plastered or unplastered.

Duct Covering. Duct covering includes materials such as adhesive, insulation, banding, coating(s), film, and jacket used to cover the outside surface of a duct, fan casing, or duct plenum.

Duct Lining. Duct lining includes materials such as adhesive, insulation, coating, and film used to line the inside surface of a duct, fan casing, or duct plenum.

Forced Air System. A central warm air heating system that is equipped with a fan or blower which provides the primary means for circulation of air.

Gravity System. A central warm air heating system through which air is circulated by gravity. It may also use an integral fan or blower that is used only to overcome the internal furnace resistance to air flow.

Heat Exchanger. A chamber in which heat resulting directly from combustion of fuel, or heat from a medium such as air, water or steam is transferred through the walls of the chamber to the air entering the supply system, or in which heat from electrical resistors is transferred to the air entering the supply system.

Heat Pump. A refrigeration system arranged to accomplish either (a) heating or (b) heating and cooling.

Labeled. Equipment or materials to which has been attached a label, symbol or other identifying mark of an organization acceptable to the "authority having jurisdiction" and concerned with product evaluation, that maintains periodic inspection of production of labeled equipment or materials and by whose labeling the manufacturer indicates compliance with appropriate standards or performance in a specified manner.

Listed. Equipment or materials included in a list published by an organization acceptable to the "authority having jurisdiction" and concerned with product evaluation, that maintains periodic inspection of production of

¹For other type systems, see NFPA 90A. For installation of blower and exhaust systems, see NFPA 91. For removal of smoke and grease-laden vapors from commercial cooking equipment, see NFPA 96 (see Appendix A).

listed equipment or materials and whose listing states either that the equipment or material meets appropriate standards or has been tested and found suitable for use in a specified manner.

NOTE: The means for identifying listed equipment may vary for each organization concerned with product evaluation, some of which do not recognize equipment as listed unless it is also labeled. The "authority having jurisdiction" should utilize the system employed by the listing organization to identify a listed product.

Plenum. An air compartment or chamber to which one or more ducts are connected and which forms part of either the supply or return systems.

Return System. An assembly of connected ducts, air passages or plenums and fittings through which air from the space or spaces to be heated is conducted back to the heat exchanger.

Rooms Large in Comparison with the Size of the Appliance. Rooms having a volume equal to at least 12 times the total volume of the furnace and at least 16 times the total volume of a boiler. Total volume of furnace or boiler is determined from exterior dimensions and is to include fan compartments and burner vestibules, when used. When the actual ceiling height of a room is greater than 8 ft (2.44 m), the volume of a room shall be figured on the basis of a ceiling height of 8 ft (2.44 m).

Shall. Indicates a mandatory requirement.

Should. Indicates a recommendation or that which is advised but not required.

Supply Systems. An assembly of connected ducts, air passages or plenums and fittings through which air, heated in a heat exchanger, is conducted from the heat exchanger to the space or spaces to be heated.

Chapter 2 System Components

2-1 Supply Systems.

2-1.1 Duct Materials. Supply ducts shall be constructed entirely of Class 0 or Class 1 duct material,¹ installed in accordance with the *Fibrous Glass Duct Construction Standards*, 5th ed., or the *Low Pressure Duct Construction Standards*, 5th ed. (see Chapter 5), whichever is applicable, or of sheet metal having a nominal thickness as shown in Table 2-1.1. Furnace bonnets and plenums shall be constructed of metal of minimum thickness as shown in Table 2-1.1. Other bonnets and plenums shall conform to the requirements for supply ducts.

¹Air duct materials are classified in UL 181 as follows:

Class 0 — Air duct materials having a fire hazard classification of zero (flame spread and smoke developed).

Class 1 — Air duct materials having a flame-spread rating of not over 25 without evidence of continued progressive combustion and a smoke-developed rating of not over 50.

Table 2-1.1 Nominal Thickness of Sheet Metal Ducts

(a) Round Ducts & Enclosed Rectangular Ducts:

Diam. or Width, Inches/mm	Nominal Thickness Inches/mm	Galvanized Sheet	Aluminum	Tin Plate
		Min. Thickness Inches/mm	Thickness Inches/mm	Min. Wt. (lbs/kg) per base box
14 (356) or less	0.016/0.406	0.013/0.330	0.016/0.406	135/61
Over 14 (356)	0.019/0.483	0.016/0.406	0.020/0.508	—

(b) Exposed Rectangular Ducts:

14 (356) or less	0.019/0.483	0.016/0.406	0.020/0.508	—
Over 14 (356)	0.022/0.559	0.019/0.483	0.023/0.584	—

Exception No. 1: Supply ducts that are completely encased in not less than 2 in. (51 mm) of concrete in a floor slab need not meet the requirements of 2-1.1 except within 2 ft (.61 m) of the furnace supply plenum, and within 2 ft (.61 m) of a vertical connection to a riser or register.

Exception No. 2: Supply ducts for a separate air cooling system, not interconnected to any warm air heating system, serving a single-family dwelling need not meet the requirements of 2-1.1, Exceptions 1, 2, and 3 provided that they are not closer than 2 ft (.61 m) to any furnace or its supply plenum, boiler, or other heat producing appliance, and that they comply with 2-2.1.1, 2-2.1.3, 2-2.2, 2-2.3, and 2-2.4 as specified for return ducts.

Exception No. 3: Vibration isolation connectors in duct systems shall be made of approved flame retarded fabric or shall consist of sleeve joints with packing of approved noncombustible material. Vibration isolation connectors of fabric shall not exceed 10 in. (254 mm) in length.

2-1.2 Use of Under Floor Space as Supply Plenum. When heated air is discharged downward into an air chamber which forms a plenum of an under floor space, the following shall apply:

(a) Use of such spaces shall be restricted to one-story portions of single-family dwellings.

(b) Such spaces shall be cleaned of all combustible material, shall be tightly and substantially enclosed and shall not be used for storage or habitation.

(c) The enclosing material of the under floor space including the side wall insulation shall be not more flammable than 1-in. (25.4-mm) (nominal) wood boards. Combustible ground cover shall be covered over with at least 2 in. (51 mm) of sand or other noncombustible material.

(d) Access, if provided to such spaces, shall be through an opening in the floor and shall not be greater than 24 by 24 in. (610 x 610 mm).

(e) Units supplying warm air to such space shall be equipped with an automatic control that will start the air circulating fan when the air in the unit bonnet reaches a temperature not higher than 150°F (66°C). Such control shall be one that cannot be set higher than 150°F (66°C).

(f) Units supplying warm air to such space shall be equipped with an approved temperature limit control that will limit outlet air temperature to 200°F (93°C).

(g) A noncombustible receptacle shall be placed below each floor type opening into the air chamber. Such receptacles shall conform to the following:

(1) The receptacle shall be securely suspended from the floor members and shall not be more than 18 in. (457 mm) below the floor opening.

(2) The size of the horizontal projected area of the receptacle shall extend 3 in. (76 mm) beyond the opening.

(3) The perimeter of the receptacle shall have a vertical lip at least 1 in. (25.4 mm) high at the open sides if it is at the level of the bottom of the joists, or 3 in. (76 mm) high if the receptacle is suspended.

(h) Floor registers shall be designed for easy removal in order to give access for cleaning the receptacles.

(i) Exterior walls and interior stud partitions shall be fire-stopped at the floor.

(j) Each wall register shall be connected to the air chamber with a duct or boot complying with 2-1.1, 3-1.3.1 and 3-1.3.2.

(k) Supply ducts to the air chamber shall comply with the provisions of 2-1.1, 3-1.1, and 3-1.2 and shall terminate approximately under the center of a room above, at a distance of not less than 6 ft (1.83 m) from the plenum chamber.

(l) Furnaces, boilers or other heat-producing appliances shall not be installed in such a supply plenum. [See NFPA 31, *Standard for the Installation of Oil Burning Equipment*, and NFPA 54, *National Fuel Gas Code* (see Chapter 5)].

2-2 Return Systems.

2-2.1 Duct Material.

2-2.1.1 Return ducts may be constructed of metal, of 1-in. (25.4-mm) (nominal) wood boards, or other suitable material, provided that no material more flammable than 1-in. (25.4-mm) boards shall be used.

Exception: As required by 2-2.1.2.

2-2.1.2 Portions of return ducts directly above the heating surface, or closer than 2 ft (.61 m) from the outer jacket or casing of the heater shall be constructed in accordance with provisions of 2-1.1 supply ducts.

2-2.1.3 The interior of combustible ducts shall be lined with noncombustible material at points where there might be danger from incandescent particles dropped through the register or heater, such as directly under floor registers and the bottom of vertical ducts or directly under heaters having a bottom return.

2-2.2 Duct Openings. In buildings where vertical openings are required to be enclosed by walls or partitions having a fire resistance rating, openings in the enclosures for connections to vertical ducts carrying return air from more than one story shall be protected by approved fire dampers in such openings.

2-2.3 Continuous Ducts.

2-2.3.1 Return air shall be conducted to the appliance through continuous ducts, except as indicated in 2-2.3.2 and 2-2.3.3.

2-2.3.2 Under floor spaces may be used as plenums for return of air from rooms directly above, provided such spaces are cleaned of all combustible material, are tightly and substantially enclosed, and are not used for storage or habitation. Furnaces, boilers and other heat-producing appliances shall not be installed in such a return plenum. [See NFPA 31, *Standard for the Installation of Oil Burning Equipment*, and NFPA 54, *National Fuel Gas Code* (see Chapter 5).]

2-2.3.3 In a single-story residence, the return air may travel through the first floor living space to the return air inlet on the furnace. (See 4-3.3.)

2-2.4 Public Corridors. Public corridors shall not be used as a portion of a supply, return, or exhaust air system serving adjoining areas other than toilet rooms, bathrooms, shower rooms, sink closets, and similar auxiliary spaces opening directly on the corridor.

Exception: This requirement shall not prohibit the use of a corridor as:

(a) A source of make-up air through normal leakage around doors for interior exhaust fans in kitchens, appliances, bathrooms, and toilets.

(b) A portion of a smoke control system, subject to the approval of the authority having jurisdiction.

2-2.5 Negative Pressure from Circulating Fan. The return system and circulating fan shall be arranged so that negative pressure from the circulating fan cannot affect the air supply for combustion or act to draw products of combustion from joints or openings in the furnace or flue.

2-3 Common Requirements.

2-3.1 Duct Coverings and Linings.

2-3.1.1 Duct coverings (see 1-3.4), duct linings (see 1-3.5), and tapes used in duct systems shall have a flame spread rating not over 25 without evidence of continued progressive combustion and a smoke developed rating no higher than 50. If coverings and linings are to be applied with adhesives, they shall be tested as applied with such adhesives, or the adhesives used shall have a flame spread rating not over 25 and a smoke developed rating no higher than 50 when in the final dry state.

Exception: Duct coverings (see 1-3.4) shall not be required to meet these requirements where they are located entirely outside of a building, do not penetrate a wall or roof, and do not create an exposure hazard.

2-3.1.2 Duct coverings and linings shall not flame, glow, smolder, or smoke when tested in accordance with ASTM C411, *Test Method for Hot-Surface Performance of High-Temperature Thermal Insulation* (see Chapter 5) at the temperature to which it is exposed in service. In no case shall the test temperature be below 250°F (121°C).

2-3.1.3 Appliances, such as fan coil units, self-contained air conditioning units, furnaces, etc., shall be considered to meet the requirements of 2-3.1.1 if they are listed. Unlisted solar energy air distribution system components shall be accompanied by supportive information showing they have flame spread and smoke developed characteristics not exceeding those of the duct system to which they are connected.

2-3.1.4 Duct coverings shall not extend through walls or floors required to be firestopped or required to have a fire resistance rating.

2-3.1.5 Duct coverings and linings shall be interrupted at the immediate area of operation of heat sources in a duct system involving electric resistance, fuel burning heaters, or heat exchangers connected to solar energy collection systems and shall be in accordance with the manufacturer's instructions.

Exception: Solar energy heat exchangers not capable of creating sustained operating temperatures higher than 200°F (93°C).

2-3.1.6 Duct coverings shall not conceal any service opening.

Exception: When a label is permanently attached to the covering indicating the exact location of the opening.

2-3.2 Joints. Joints and seams shall be securely fastened and made substantially airtight. Slip joints shall have a lap of at least 1 in. (25.4 mm) and shall be individually fastened. (See Figure 2-3.2.) Tape may be used for sealing joints but, where exposed to the air in the system, it shall not be more combustible than fabric complying with NFPA 701, *Standard Methods of Fire Tests for Flame Resistant Textiles and Films* (see Chapter 5). [See *Flame-Retarded Fabrics in the Building Materials Directory*, published by Underwriters Laboratories Inc. (see Appendix A)].

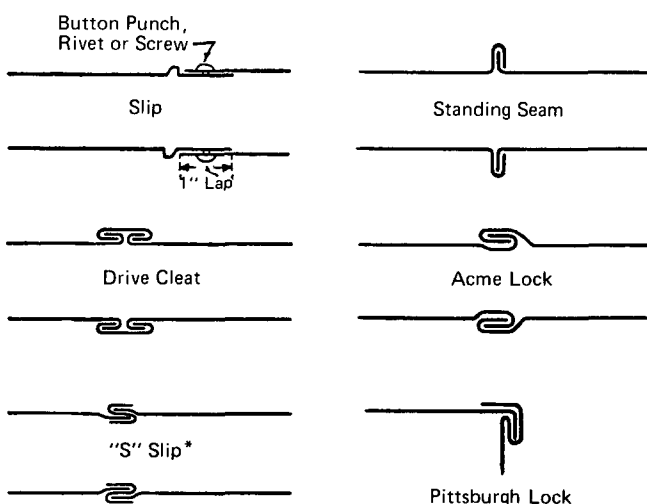


Figure 2-3.2 Types of duct joints.

*Used where the joint is otherwise fastened on two sides.

2-3.3 Duct Hangers. Ducts shall be securely supported by metal hangers, straps, lugs or brackets. No nails shall be driven through the duct walls and no unnecessary holes shall be cut therein.

2-3.4 Protection of Vertical Ducts. Where vertical ducts are installed within closets or rooms, they shall be enclosed with materials equivalent to those used in the closet or room construction. (See 3-1.3.)

2-3.5 Registers for Ducts and Plenums.

2-3.5.1 Registers shall be constructed of metal or conform with the following:

(a) Be made of a material classified "(94 HB)" when tested as described in UL 94, *Standard for Tests of Flammability of Plastic Materials* (see Chapter 5).

(b) Floor registers shall resist without structural failure a 200-lb (90.7-kg) concentrated load on a 2-in. (51-mm) diameter disc applied to the most critical area of the exposed face of the register. For this test the register is to be at a temperature not less than 165°F (74°C) and is to be supported in accordance with the manufacturer's instructions.

2-3.5.2 Electric or fuel-fired furnace systems shall have at least one register or grill without closeable shutter, and the duct leading thereto shall be without a damper.

Exception: Where dampers and shutters cannot shut off more than 80 percent of the duct area.

2-3.5.3 Fittings connecting the registers to the duct system shall be constructed of metal or material which complies with the requirements of Class 0, Class 1, or Class 2 ducts under UL 181, *Standard for Factory-Made Air Ducts and Connectors* (see Chapter 5).

2-3.6 Pipeless Furnace Registers. Where registers are installed in the floor over the furnace (as in the "pipeless" furnace) the register box shall be constructed double with an air space not less than 4 in. (102 mm) between, except where the warm air passage is surrounded by a cold air passage.

2-3.7 Use of Concealed Ceiling Spaces as Supply or Return Plenums. When concealed ceiling spaces are to be used for air chambers or plenums, the following shall apply:

(a) Such installations shall be limited to detached single-family dwellings, and no concealed ceiling space plenum shall serve more than one story of such residence. This shall not preclude separate installations on each floor.

(b) The concealed space plenum shall be separated from any other concealed spaces and shall be completely enclosed with construction not more flammable than 1-in. (25.4-mm) (nominal) wood boards.

(c) Such spaces shall not be used for storage.

(d) No ventilating system shall discharge into such spaces.

(e) Units supplying such spaces shall be designed to limit the temperature of the air discharged into the supply plenum or chamber to 165°F (74°C).

(f) Where units incorporate heating elements, heated surfaces, or combustion chambers, developing temperatures higher than 165°F (74°C), such components shall be shielded so as to prevent direct radiation onto combustible material when the unit is installed.

(g) The installation of the unit supplying such spaces shall not produce negative pressure in the attic when the attic is the source of air for combustion for fuel-fired equipment.

Chapter 3 Fire Integrity of Building Construction

3-1 Clearances to Combustible Material.

3-1.1 General. Where ducts are adjacent to plaster on metal lath, or to other noncombustible finish attached to a combustible material, the clearance shall be measured to the combustible material, except that the clearance shall be measured to the surface of the plaster or other noncombustible finish where a clearance of 2 in. (51 mm) or less is specified above a bonnet or plenum chamber or above supply ducts. This shall not be construed to prohibit closure of openings with noncombustible material where ducts pass through walls and partitions, as provided in 3-1.2.

Exception: Where an appliance, duct work, or chimney or vent connection is listed for different clearances, the listed clearances shall apply.

3-1.2 Clearances from Horizontal Supply Ducts. Minimum clearances from horizontal supply ducts shall be as follows:

(a) Within a distance of 3 ft (.91 m) of the plenum of a system classified under A, C, or G of Table 3-1.3, the clearance shall be not less than that specified above the bonnet or plenum.

(b) Within a distance of 6 ft (1.83 m) of the plenum of a system classified under B or D of Table 3-1.3, the clearance shall be not less than 6 in. (152 mm). From ducts of furnaces classified under D, the clearance shall be not less than 1 in. (25.4 mm) beyond 6 ft (1.83 m) from the plenum to a point where there is a change in direction equivalent to 90 degrees or more.

(c) From ducts of furnaces classified under Item F of Table 3-1.3, the clearance shall be not less than 18 in. (457 mm) out to 3 ft (.91 m) from the bonnet or plenum, not less than 6 in. (152 mm) from 3 ft (.91 m) to 6 ft (1.83 m), and not less than 1 in. (25.4 mm) beyond 6 ft (1.83 m).

(d) Beyond the distances from the plenum or change in direction specified in 3-1.2 (a) and (b), no clearance is required.

(e) Where a horizontal supply duct passes through or pierces a partition or enclosure constructed of combustible material, within the distances, or point of change in direction specified in 3-1.2 (a), (b), and (c), the clearance shall be not less than that specified in those paragraphs. The ends of the space providing this clearance may be closed with a thimble and collar or the wall surfaces extended to the duct with noncombustible building

material such as plaster on metal lath [see Figures 3-1.2 (a) and (b)].

(f) Separate air cooling system ducts that are made of other than noncombustible material shall be installed with clearances to warm air ducts as required in 3-1.2 (a), (b), and (c).

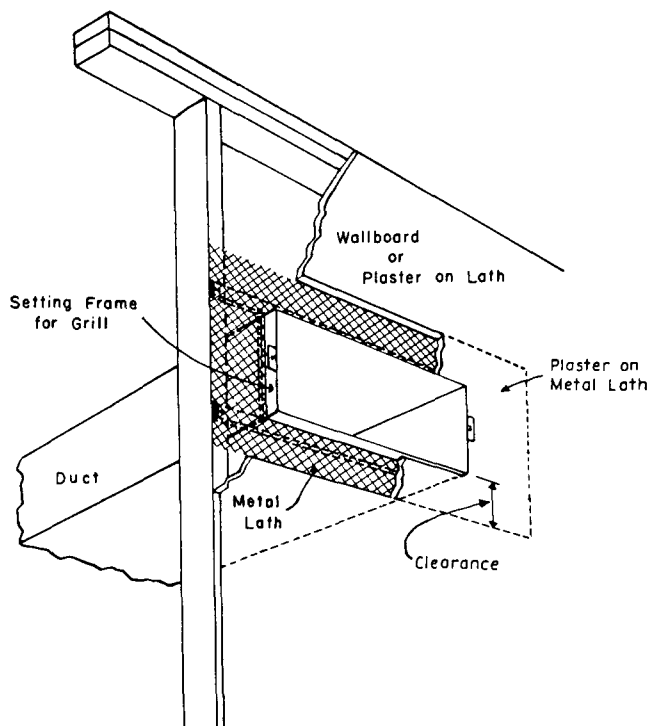


Figure 3-1.2(a) An arrangement for closing ends of clearance space around a supply duct. A similar arrangement can be used where a duct continues on through the partition.

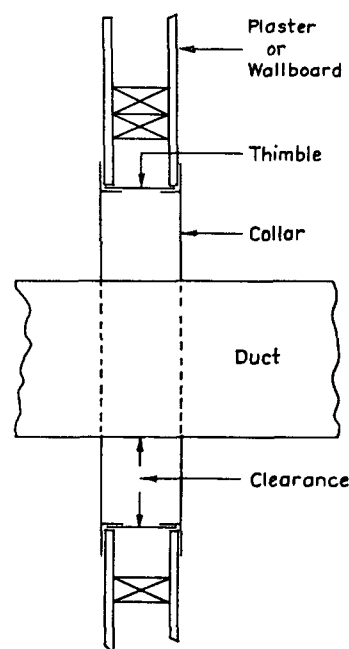


Figure 3-1.2(b) An arrangement for passing ducts through combustible walls or partitions as specified in 3-1.2(e).

Table 3-1.3

Clearances to Combustible Material for Furnaces, Boilers, Solar Energy Heating Devices, and Heat Exchangers Installed in Rooms which are Large in Comparison with Size of Appliance.

Minimum Clearance, Inches (For S.I. Units: 1 in. = 25.4 mm)					
	Above & Sides of Bonnet or Plenum	Jacket Sides & Rear	Front ¹	Projecting Flue Box or Draft Hood	Chimney or Vent Con- nector
A. Listed automatically fired, forced air or gravity sys- tem, with 250°F (121°C) temperature limit control.					
Burning Liquid Fuel . . .	2 ⁶	6	24	18	18
Burning Gas Fuel	2 ⁶	6	18	6	6
Utilizing Electricity . . .	2 ⁶	6	18	—	—
B. Unlisted automatically fired, forced air or gravity system equipped with tem- perature limit control which cannot be set higher than 250°F (121°C).					
Burning Liquid Fuel . . .	6	6	24	18	18
Burning Gas Fuel	6	6	18	18 ⁴	18 ⁴
Utilizing Electricity . . .	6	6	18	—	—
C. Steam or Hot Water Heat Exchanger — Steam not over 15 psi (103 kPa) pres- sure and hot water not more than 250°F (121°C).	2	2	2	—	—
D. Automatically stoker fired, forced air system equipped with 250°F (121°C) tem- perature limit control and with a barometric draft control in accordance with Note 2.					
Burning Solid Fuel	6	6	48	18	18

Notes for Table 3-1.3:

¹ Front clearance shall be sufficient for servicing the burner and furnace or boiler.

² Barometric draft control operated by draft intensity and permanently set to limit the draft to a maximum intensity of 0.13 in. (32.4 Pa) of water gage.

³ This clearance may be reduced to 6 in. (152 mm) for listed gas burning furnaces and boilers.

⁴ For unlisted gas appliances equipped with an approved draft hood, this clearance may be reduced to 9 in. (229 mm).

Minimum Clearance, Inches (For S.I. Units: 1 in. = 25.4 mm)					
	Above & Sides of Bonnet or Plenum	Jacket Sides & Rear	Front ¹	Projecting Flue Box or Draft Hood	Chimney or Vent Con- nector
E. Heating Boilers Used in Central Warm Air Heat- ing Systems — Steam boilers operating at not over 15 psi (103 kPa) gage pressure and hot water boilers operating at not in excess of 250°F (121°C) of the water-wall type or hav- ing a jacket or lining of masonry or other satisfac- tory material.					
Burning Liquid Fuel . . .	6 ⁵	6	24	18	18
Burning Gas Fuel	6 ⁵	6	18	9 ³	9 ³
Burning Solid Fuel	6 ⁵	6	48	18	18
Utilizing Electricity . . .	6 ⁵	6	18	—	—
F. Furnaces and Heating Boilers Used in Central Warm Air Heating Sys- tems, other than above.					
Burning Liquid Fuel . . .	18	18	48	18	18
Burning Gas Fuel	18	18	18	18 ⁴	18 ⁴
Burning Solid Fuel	18	18	48	18	18
G. Solar Energy Heat Ex- changers operating at a temperature not in excess of 250°F (121°C).	2	2	2	—	—

⁵ This clearance is above top of boiler.

⁶ This clearance may be reduced to one in. (25.4 mm) for a listed forced air or gravity furnace equipped with a limit control that will limit outlet air temperature to 200°F (93°C).

⁷ This clearance also applies to ducts from solar collectors to heat exchangers or thermal storage systems.

3-1.3 Clearances from Vertical Ducts, Risers, Boots and Register Boxes.

3-1.3.1 Where a duct, riser, boot or box on a system that does not require 18-in. (457-mm) clearance above the supply plenum or bonnet enters a floor, partition, or enclosure constructed of combustible material within the distance from the plenum specified in 3-1.2 (a) and (b), the clearance from such duct, riser or boot shall be not less than the distance required above the furnace bonnet or plenum (see Table 3-1.3) or the duct shall change direction equivalent to at least two 90-degree turns before entering such floor, partition, or enclosure. The above does not apply to pipeless furnaces covered in 2-3.5.

3-1.3.2 Where a supply duct enters the floor of the first story above that in which the furnace is located, the space around the duct at such points shall be sealed with non-combustible material.

3-1.3.3 Where a duct, riser, boot or box on a system that requires 18-in. (457-mm) clearance above the supply plenum or bonnet enters a floor, partition, or enclosure constructed of combustible material within a horizontal distance of 6 ft (1.83 m) of the furnace, the duct shall be so arranged that heated air must travel at least 6 ft (1.83 m) from the closest primary heating surface and change direction equivalent to at least one 90-degree turn before entering such floor, partition or enclosure.

3-1.3.4 Where a duct, riser, boot or box on a system that requires 18-in. (457-mm) clearance above the supply plenum or bonnet enters the floor of the first story above that in which the furnace is situated, the clearance shall be at least $\frac{3}{16}$ of an in. (4.76 mm) from all combustible material in the floor construction, unless the duct is of double wall construction with a continuous air space of

not less than $\frac{3}{16}$ of an in. (4.76 mm) between the inner and outer walls.

3-1.3.5 Where a duct or riser on a system that requires 18-in. (457-mm) clearance above the supply plenum or bonnet is enclosed in a partition, wall or concealed space, constructed in whole or in part of combustible material:

(a) It shall be installed with an air space of not less than $\frac{3}{16}$ in. (4.76 mm) between the duct and combustible material, unless a noncombustible insulating covering of cellular type at least $\frac{1}{8}$ in. (3.175 mm) thick is provided (in metal lath and plaster partitions no air space is needed except from wood studs);

(b) Or, such duct shall be made double with a continuous air space of not less than $\frac{3}{16}$ in. (4.76 mm) between the inner and outer walls.

3-1.3.6 Where a register on a system that requires 18-in. (457-mm) clearance above the supply plenum or bonnet is placed in a floor or wall constructed of combustible material, the register box shall be installed with a clear space of not less than $\frac{3}{16}$ in. (4.76 mm) between the top and sides of the box and any combustible material.

3-1.4 Clearances from Furnaces, Boilers, Heat Exchangers, Heat Pumps, and Cooling Units.

3-1.4.1 Minimum clearances from furnaces, boilers, heat exchangers and their flue box, draft hood, or chimney or vent connectors installed in rooms which are large in comparison with the size of the appliance shall be as given in Table 3-1.3.

Exception: As provided in 3-1.1 and 3-1.4.2.

3-1.4.2 Heating furnaces and boilers used in residence-type central warm air heating systems may be installed in

Table 3-1.4
Clearances, Inches, with Specified Forms of Protection¹

(For S.I. Units: 1 in. = 25.4 mm)
where the required clearance with no protection is:

Type of Protection Applied to the combustible material unless otherwise specified and covering all surfaces within the distance specified as the required clearance with no protection (see Fig. 3-1.4). Thicknesses are minimum.							
	Above	Sides & Rear	18 inches Chimney or Vent Connector	9 inches Chimney or Vent Connector	Above	6 inches Sides & Rear	Vent Connector
(a) $\frac{1}{4}$ in. asbestos millboard spaced out 1 in. ²	15	9	12	6	3	2	3
(b) 0.013 in. (0.330 mm) carbon sheet steel on $\frac{1}{4}$ in. asbestos millboard	12	9	12	4	3	2	2
(c) 0.013 in. (0.330 mm) carbon sheet steel spaced out 1 in. ²	9	6	9	4	2	2	2
(d) 0.013 in. (0.330 mm) carbon sheet steel on $\frac{1}{4}$ in. asbestos millboard spaced out 1 in. ²	9	6	9	4	2	2	2
(e) $1\frac{1}{2}$ in. asbestos cement covering on heating appliance	9	6	18	9	2	1	6
(f) $\frac{1}{4}$ in. asbestos millboard on 1 in. mineral fiber batts reinforced with wire mesh or equivalent	6	6	6	4	2	2	2
(g) 0.027 in. (0.686 mm) carbon sheet steel on 1 in. mineral fiber batts reinforced with wire mesh or equivalent	4	3	3	2	2	2	2
(h) $\frac{1}{4}$ in. asbestos cement board or $\frac{1}{4}$ in. asbestos millboard	18	18	18	9	4	4	4
(i) $\frac{1}{4}$ in. cellular asbestos	18	18	18	9	3	3	3

¹ Except for the protection indicated in (e), all clearances shall be measured from the outer surface of the appliance to the combustible material disregarding any intervening protection applied to the combustible material.

² Spacers shall be of noncombustible material.

rooms which are large in comparison with the size of the appliance with clearances reduced as designated in Table 3-1.4 where combustible material is protected in the manner specified. Such reductions shall not apply to installations in alcoves or closets.

3-1.4.3 Furnaces and boilers used in residence-type central warm air heating systems shall not be installed in a confined space such as an alcove or closet.

Exception: Furnaces and boilers specifically approved for such installations, when installed in compliance with the approval and with the clearances from the walls and ceiling of the alcove or closet not less than specified regardless of the type of construction.

3-1.4.4 Cooling units, heat pumps, and equipment involving furnaces, boilers, or electric resistance heating shall not be installed in an attic or in any other space in the building construction used as a supply or return plenum.

Exception: Cooling units, heat pumps and heating equipment may be installed in such a supply or return plenum when specifically approved for such use as a result of tests and listing by an approved testing laboratory. Such units or equipment shall be installed in accordance with the conditions of such approval.

3-1.4.5 Furnaces, boilers, heat exchangers, heat pumps, solar energy system components, and air conditioning and cooling units shall be installed so as to provide reasonable accessibility for cleaning heating surfaces, removing and replacing burners, motors, compressors, controls, air filters, draft regulators and other working parts and for adjusting, cleaning and lubricating parts requiring such attention.

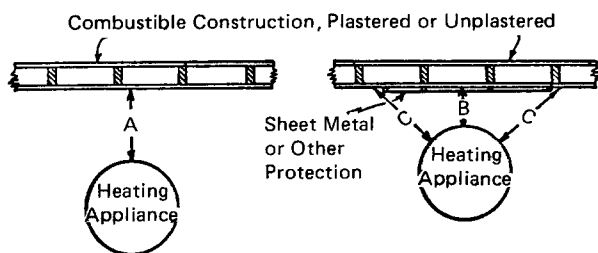


Figure 3-1.4 Sheet metal or other protection to reduce required clearance from heating appliance.

A equals the required clearance with no protection specified in Table 3-1.3.

B equals the reduced clearance permitted in accordance with Table 3-1.4. The protection applied to construction using combustible material is required to extend far enough in each direction to make "*C*" equal to "*A*."

3-2 Firestopping.

3-2.1 Where the installation of ducts in walls, floors, or partitions requires the removal of any firestopping, the spaces around the duct at such points where firestopping was removed shall be sealed with noncombustible insulating material.

3-2.2 Where spaces between studs in walls or partitions are used as return ducts, the portions of such spaces so used shall be cut off from all remaining unused portions by tight-fitting stops of sheet metal or of wood not less than 2 in. (51 mm) (nominal) thick. Such spaces shall not be used as a supply duct.

Chapter 4 Equipment, Wiring, and Controls

4-1 Equipment.

4-1.1 Heating Panels.

4-1.1.1 Air chambers having one or more external surfaces designed for use as heating panels shall be used only with:

(a) Automatically fired gas or oil burning forced warm air systems equipped with temperature limit controls that will limit furnace outlet air temperature to 200°F (93°C), or,

(b) Forced warm air systems equipped with heat exchangers utilizing steam which cannot exceed 15 lb (103 kPa) gage pressure or hot water which cannot exceed a temperature of 250°F (121°C).

4-1.1.2 Connection. Heating panels shall be connected to supply and return air ducts conforming to this standard.

4-1.1.3 Construction.

(a) Where warm air supply is from a warm air furnace, heating panels shall be enclosed on all sides with material which is wholly noncombustible or which possesses a flame spread classification of not over 25 as determined in accordance with NFPA 255, *Method of Test of Surface Burning Characteristics of Building Materials* (see Chapter 5). This enclosing material shall be securely attached to the building structure; joints and seams shall be substantially airtight. Braces and hangers inside the chamber shall be noncombustible.

(b) Where warm air supply is from a steam or hot water heat exchanger, heating panels shall either comply with 4-1.1.3 (a) or shall be enclosed on all sides with material not more flammable than 1-in. (25.4-mm) (nominal) wood boards. This enclosing material shall be securely attached to the building structure; joints and seams shall be substantially airtight. No single vertical heating panel shall serve more than one story.

4-1.2 Down-Flow Systems.

4-1.2.1 General. Down-flow heating equipment shall be designed or equipped so that the outlet air temperature will not exceed 200°F (93°C).

Exception: For systems installed under the provisions of 2-3.7, the outlet air temperature shall be limited to 165°F (74°C).

4-1.2.2 Equipment shall be designed to prevent unsafe temperature in event of reverse flow or fan failure.

4-1.3 Air Filters.

4-1.3.1 Air filters shall have either a Class 1 or Class 2 rating in accordance with UL 900, *Standard for Test Performance of Air Filter Units* (see Chapter 5).

4-1.3.2 An evaporative cooler containing a combustible filter and water evaporation medium, such as excelsior, shall not be used.

4-1.3.3 Liquid adhesive coatings used on filters shall have a flash point not less than 325°F (163°C), per ASTM D93, *Pensky-Martens Closed Tester* (see Chapter 5).

4-1.4 Air Cooling Equipment. Mechanical refrigeration used with air duct systems shall be installed in accordance with ANSI/ASHRAE 15, *Safety Code for Mechanical Refrigeration* (see Chapter 5).

4-1.4.1 Evaporative coolers containing a combustible evaporating medium, such as excelsior, shall not be used. This does not preclude the use of evaporation media meeting the requirements of 4-1.3.1.

4-1.5 Furnaces Used with Cooling Units.

4-1.5.1 Combination units in which a refrigeration coil is provided shall have the refrigeration coil located downstream from the heating furnace, or the coil shall be located parallel to the heating furnace.

Exception: Where the heating furnace is specifically approved for installation downstream from the coil.

4-1.5.1.1 When the heating furnace is located upstream from the coil, the coil shall be designed or equipped so as not to develop excessive temperatures or pressures. In those cases where the coil is located parallel to the heating furnace, dampers or other means used to control flow of air shall be adequate to prevent chilled air from entering the furnace section. If the dampers are manually operated, means shall be provided to prevent operation of either unit unless the damper is in the full heat or cool position. Adequate means shall be provided for disposal of condensate and to prevent dripping of condensate on the heating element.

4-1.5.2 Furnaces (including duct furnaces) may be installed downstream from evaporative coolers or air washers provided that condensate will not fall into any portion of burners, pilots, or burner carry-over arms and provided that the heating element is made of corrosion-resistant material, such as stainless steel, ceramic-coated steel, or an aluminum-coated steel in which the bond between the steel and the aluminum is an iron-aluminum alloy. Air washers operating with chilled water which delivers air below the dew point of the ambient air at the appliance are considered as refrigeration systems.

4-1.5.3 The capacity of the blower shall be adequate to overcome the external static resistance imposed by the combined heating and cooling units at the air throughput required for heating or cooling, whichever is greater.

4-1.6 Boilers Used with Cooling Units.

4-1.6.1 When the same coil is used for both heating and cooling, valves shall be provided to prevent chilling of the boiler during the operation of the cooling system.

4-1.6.2 When hot water heating boilers are connected to heating coils located in air handling units where they may be exposed to refrigerated air circulation, such boiler piping systems shall be equipped with flow control valves or other automatic means to prevent gravity circulation of the boiler water during the cooling cycle.

4-1.7 Heat Pump Systems. Heat pump systems involving units or equipment installed in attics or in a space in the building construction used as a supply or return plenum shall conform to the appropriate provisions of 2-3.7 and 3-1.4.

4-1.8 Solar Systems.

4-1.8.1 Solar systems or solar assisted systems shall be designed, constructed, and controlled so that the air temperature in the supply system shall not exceed 250°F (121°C).

4-1.8.2 A flammable or combustible heat transfer fluid from a solar energy system shall not be used in a heat exchanger located in a duct system.

4-2 Electric Wiring and Equipment. Electric wiring and equipment shall be adequate for safe operation and shall be installed in accordance with NFPA 70, *National Electrical Code*® (see Chapter 5). In addition, a disconnecting means shall be installed within sight and easy reach in the ungrounded leads of each power circuit to electrically operated components which are in unprotected locations and in other locations not readily accessible for service.

4-3 Controls.

4-3.1 Temperature Limit Controls. Temperature limit controls shall be of a listed type and shall be such that they cannot be set higher than the specified temperature setting and shall be located no more than 2 ft (.61 m) downstream from the heat exchanger.

4-3.2 Fan Control for Stoker-Fired Furnaces. When a warm air furnace equipped with a fan to circulate the air is stoker-fired it shall also be equipped with an automatic over-run control to start the fan when the air in the furnace bonnet or at the beginning of the main supply duct at a point not affected by radiated heat reaches a temperature not higher than 200°F (93°C) after the stoker and fan (in its normal operation) have been shut down as a result of a satisfied thermostat. If a manual disconnect is installed in the air circulating fan electrical circuit, it shall be so installed as to de-energize simultaneously both the fan and the stoker.

4-3.3 Air for Combustion and Ventilation. Heating appliances shall be installed in a location in which the facilities for ventilation permit satisfactory combustion and proper ventilation under normal conditions of opera-