

NFPA 82
Standard on
Incinerators and
Waste and
Linen Handling
Systems and
Equipment

1999 Edition



National Fire Protection Association, 1 Batterymarch Park, PO Box 9101, Quincy, MA 02269-9101
An International Codes and Standards Organization

Copyright ©
National Fire Protection Association, Inc.
One Batterymarch Park
Quincy, Massachusetts 02269

IMPORTANT NOTICE ABOUT THIS DOCUMENT

NFPA codes and standards, of which the document contained herein is one, are developed through a consensus standards development process approved by the American National Standards Institute. This process brings together volunteers representing varied viewpoints and interests to achieve consensus on fire and other safety issues. While the NFPA administers the process and establishes rules to promote fairness in the development of consensus, it does not independently test, evaluate, or verify the accuracy of any information or the soundness of any judgments contained in its codes and standards.

The NFPA disclaims liability for any personal injury, property or other damages of any nature whatsoever, whether special, indirect, consequential or compensatory, directly or indirectly resulting from the publication, use of, or reliance on this document. The NFPA also makes no guaranty or warranty as to the accuracy or completeness of any information published herein.

In issuing and making this document available, the NFPA is not undertaking to render professional or other services for or on behalf of any person or entity. Nor is the NFPA undertaking to perform any duty owed by any person or entity to someone else. Anyone using this document should rely on his or her own independent judgment or, as appropriate, seek the advice of a competent professional in determining the exercise of reasonable care in any given circumstances.

The NFPA has no power, nor does it undertake, to police or enforce compliance with the contents of this document. Nor does the NFPA list, certify, test or inspect products, designs, or installations for compliance with this document. Any certification or other statement of compliance with the requirements of this document shall not be attributable to the NFPA and is solely the responsibility of the certifier or maker of the statement.

NOTICES

All questions or other communications relating to this document and all requests for information on NFPA procedures governing its codes and standards development process, including information on the procedures for requesting Formal Interpretations, for proposing Tentative Interim Amendments, and for proposing revisions to NFPA documents during regular revision cycles, should be sent to NFPA headquarters, addressed to the attention of the Secretary, Standards Council, National Fire Protection Association, 1 Batterymarch Park, P.O. Box 9101, Quincy, MA 02269-9101.

Users of this document should be aware that this document may be amended from time to time through the issuance of Tentative Interim Amendments, and that an official NFPA document at any point in time consists of the current edition of the document together with any Tentative Interim Amendments then in effect. In order to determine whether this document is the current edition and whether it has been amended through the issuance of Tentative Interim Amendments, consult appropriate NFPA publications such as the *National Fire Codes*® Subscription Service, visit the NFPA website at www.nfpa.org, or contact the NFPA at the address listed above.

A statement, written or oral, that is not processed in accordance with Section 16 of the Regulations Governing Committee Projects shall not be considered the official position of NFPA or any of its Committees and shall not be considered to be, nor be relied upon as, a Formal Interpretation.

The NFPA does not take any position with respect to the validity of any patent rights asserted in connection with any items which are mentioned in or are the subject of this document, and the NFPA disclaims liability of the infringement of any patent resulting from the use of or reliance on this document. Users of this document are expressly advised that determination of the validity of any such patent rights, and the risk of infringement of such rights, is entirely their own responsibility.

Users of this document should consult applicable federal, state, and local laws and regulations. NFPA does not, by the publication of this document, intend to urge action that is not in compliance with applicable laws, and this document may not be construed as doing so.

Licensing Policy

This document is copyrighted by the National Fire Protection Association (NFPA). By making this document available for use and adoption by public authorities and others, the NFPA does not waive any rights in copyright to this document.

1. Adoption by Reference – Public authorities and others are urged to reference this document in laws, ordinances, regulations, administrative orders, or similar instruments. Any deletions, additions, and changes desired by the adopting authority must be noted separately. Those using this method are requested to notify the NFPA (Attention: Secretary, Standards Council) in writing of such use. The term “adoption by reference” means the citing of title and publishing information only.

2. Adoption by Transcription – **A.** Public authorities with lawmaking or rule-making powers only, upon written notice to the NFPA (Attention: Secretary, Standards Council), will be granted a royalty-free license to print and republish this document in whole or in part, with changes and additions, if any, noted separately, in laws, ordinances, regulations, administrative orders, or similar instruments having the force of law, provided that: (1) due notice of NFPA’s copyright is contained in each law and in each copy thereof; and (2) that such printing and republication is limited to numbers sufficient to satisfy the jurisdiction’s lawmaking or rule-making process. **B.** Once this NFPA Code or Standard has been adopted into law, all printings of this document by public authorities with lawmaking or rule-making powers or any other persons desiring to reproduce this document or its contents as adopted by the jurisdiction in whole or in part, in any form, upon written request to NFPA (Attention: Secretary, Standards Council), will be granted a nonexclusive license to print, republish, and vend this document in whole or in part, with changes and additions, if any, noted separately, provided that due notice of NFPA’s copyright is contained in each copy. Such license shall be granted only upon agreement to pay NFPA a royalty. This royalty is required to provide funds for the research and development necessary to continue the work of NFPA and its volunteers in continually updating and revising NFPA standards. Under certain circumstances, public authorities with lawmaking or rule-making powers may apply for and may receive a special royalty where the public interest will be served thereby.

3. Scope of License Grant – The terms and conditions set forth above do not extend to the index of this document.

(For further explanation, see the Policy Concerning the Adoption, Printing, and Publication of NFPA Documents, which is available upon request from the NFPA.)

Copyright © 1999 NFPA, All Rights Reserved

NFPA 82

Standard on

Incinerators and Waste and Linen Handling Systems and Equipment

1999 Edition

This edition of NFPA 82, *Standard on Incinerators and Waste and Linen Handling Systems and Equipment*, was prepared by the Technical Committee on Incinerators and Waste Handling Systems and acted on by the National Fire Protection Association, Inc., at its Fall Meeting held November 16–18, 1998, in Atlanta, GA. It was issued by the Standards Council on January 15, 1999, with an effective date of February 4, 1999, and supersedes all previous editions.

Changes other than editorial are indicated by a vertical rule in the margin of the pages on which they appear. These lines are included as an aid to the user in identifying changes from the previous edition.

This edition of NFPA 82 was approved as an American National Standard on February 4, 1999.

Origin and Development of NFPA 82

This standard was first adopted by the NFPA in 1948 on recommendation of the Committee on Field Practice. In 1953, a completely revised edition of the text on incinerators was prepared by a representative subcommittee and adopted by the NFPA on recommendation of the Committee on Building Construction. Responsibility for the subject of incinerators was turned over to the Committee on Chimneys and Heating Equipment in 1956. Revised editions were adopted in 1955, 1958, 1960, 1969, 1970, 1971, and 1972. The original 1948 text covered both rubbish handling and incinerators; the 1953, 1955, 1958, and 1960 revisions covered only incinerators. In the 1960 edition, incinerators and rubbish handling were covered by separate standards, NFPA 82, *Standard on Incinerators*, and NFPA 82A, *Standard for Rubbish Handling*, respectively, with NFPA 82A remaining unchanged from the 1948 edition. In the 1969 edition, the subject of rubbish handling was included with incinerators, and NFPA 82A was discontinued as a separate standard. The 1977 edition was expanded to include linen handling systems, and the 1983 edition represented a partial revision, which was mainly editorial.

The 1990 edition contained minor revisions to Chapters 1 and 2, including a minor change to the Scope section. Chapters 3 and 4 were completely revised, and a new Appendix A was added to provide technical information to facilitate the selection of chimney materials for handling saturated and corrosive gases. The entire section on domestic incinerators was deleted from the 1990 edition.

For the 1994 edition, Chapters 3 and 4 were combined into one chapter (new Chapter 3). Limited-combustible construction was recognized by a new definition and by a new exception that allowed limited-combustible construction for a gravity chute enclosure where a building is protected throughout by a supervised automatic sprinkler system. Also, new Chapters 4 and 7 were added to address waste handling systems other than chute systems and waste processing equipment other than compactors.

This edition of NFPA 82 clarifies that NFPA 82 does not apply to one- and two-family residential structures. Chapter 3 has been modified to allow for a maximum 45 degree chute offset above the top-loading door. Additionally, Chapter 3 has been modified to reduce the minimum linen chute size to 20 in. and to reduce the termination height of chute venting to 3 ft above the roof of the building. Chapter 5 has also been modified to delete the requirements associated with domestic compactors.

Technical Committee on Incinerators and Waste Handling Systems

Lawrence G. Doucet, Chair
Doucet & Mainka, PC, NY [U]
American Society for Healthcare Engr

David J. Kaiser, Underwriters Laboratories Inc., IL [RT]
Frank G. Maris, Trans-Vac, TX [M]

Robert E. McRee, Standards Int'l Inc., NC [SE]
Christopher R. Schulz, Van-Packer Co., Inc., IL [M]

Alternate

Thaddeus Bukowski, Underwriters Laboratories Inc., IL
[RT]
(Alt. to D. J. Kaiser)

Christian Dubay, NFPA Staff Liaison

This list represents the membership at the time the Committee was balloted on the text of this edition. Since that time, changes in the membership may have occurred. A key to classifications is found at the back of this document.

NOTE: Membership on a committee shall not in and of itself constitute an endorsement of the Association or any document developed by the committee on which the member serves.

Committee Scope: This Committee shall have primary responsibility for documents on the fire-safe installation and use of incinerators, compactors, converters, other waste handling systems and laundry (linen) handling systems.

Contents

Chapter 1 General	82- 4	Chapter 5 Waste Compactors	82-15
1-1 Scope	82- 4	5-1 General	82-15
1-2 Definitions	82- 4	5-2 Commercial-Industrial Compactors	82-15
1-3 Application of Standard	82- 4		
Chapter 2 Incinerators	82- 5	Chapter 6 Waste Storage Rooms	82-15
2-1 General	82- 5	6-1 Application.....	82-15
2-2 Commercial-Institutional Incinerators.....	82- 5	6-2 Fire Separation.....	82-15
2-3 Outdoor Incinerators	82- 9	6-3 Automatic Sprinklers.....	82-15
Chapter 3 Waste and Linen Chutes and Transport Systems	82-10	Chapter 7 Other Waste Processing Equipment	82-15
3-1 Definitions	82-10	7-1 Definition.....	82-15
3-2 Gravity Waste or Linen Chutes	82-10	7-2 Fire Separation	82-15
3-3 Full Pneumatic Waste and Linen Conveying Systems	82-12	7-3 Explosion Protection.....	82-15
3-4 Gravity Pneumatic Trash or Linen Conveying System	82-13	7-4 Automatic Sprinklers	82-15
Chapter 4 Other Waste Handling Systems	82-14	Chapter 8 Referenced Publications	82-15
4-1 Definition.....	82-14	Appendix A Explanatory Material	82-16
4-2 Waste Spillage Control	82-15	Appendix B Referenced Publications	82-19
4-3 Enclosure Requirements.....	82-15	Index	82-19
4-4 Automatic Sprinklers	82-15		

NFPA 82**Standard on****Incinerators and Waste and Linen Handling
Systems and Equipment****1999 Edition**

NOTICE: An asterisk (*) following the number or letter designating a paragraph indicates that explanatory material on the paragraph can be found in Appendix A.

Information on referenced publications can be found in Chapter 8 and Appendix B.

Chapter 1 General**1-1 Scope.**

1-1.1 This standard covers requirements primarily concerned with reducing the fire hazards encompassing the installation and use of waste storage rooms, containers, handling systems, incinerators, and compactors. It also is concerned with linen and laundry handling systems.

1-1.2 This standard does not include design criteria for the purpose of reducing air pollution. For such criteria, consult the authorities having jurisdiction.

1-1.3 The requirements in this standard shall not apply to one- or two-family residential structures.

1-2* Definitions.

Approved.* Acceptable to the authority having jurisdiction.

Authority Having Jurisdiction.* The organization, office, or individual responsible for approving equipment, an installation, or a procedure.

Chute Offset. For the purpose of this standard, a single chute offset from plumb shall include a return of the chute to plumb.

Combustible. Material subject to increase in combustibility or flame spread rating beyond the limits established in the definition of Limited-Combustible.

Labeled. Equipment or materials to which has been attached a label, symbol, or other identifying mark of an organization that is acceptable to the authority having jurisdiction and concerned with product evaluation, that maintains periodic inspection of production of labeled equipment or materials, and by whose labeling the manufacturer indicates compliance with appropriate standards or performance in a specified manner.

Limited-Combustible.* As applied to a building construction material, other than interior finish, means a material not complying with the definition of noncombustible material that, in the form in which it is used, has a potential heat value not exceeding 3500 Btu/lb ($8.14 \text{ m} \times 10^6 \text{ J/kg}$) and complies with one of the following paragraphs, (a) or (b).

- (a) Materials having a structural base of noncombustible material with a surfacing not exceeding a thickness of $1/8$ in. (0.3 cm) that has a flame spread rating not greater than 50.

- (b) Materials, in the form and thickness used, other than as described in (a), having neither a flame spread rating greater than 25 nor evidence of continued progressive combustion, and of such composition that surfaces that would be exposed by cutting through the material on any plane would have neither a flame spread rating greater than 25 nor evidence of continued progressive combustion.

Materials subject to increase in combustibility or flame spread rating beyond the limits herein established through the effects of age, moisture, or other atmospheric condition shall be considered combustible.

Listed.* Equipment, materials, or services included in a list published by an organization that is acceptable to the authority having jurisdiction and concerned with evaluation of products or services, that maintains periodic inspection of production of listed equipment or materials or periodic evaluation of services, and whose listing states that either the equipment, material, or service meets identified standards or has been tested and found suitable for a specified purpose.

Noncombustible. A material that, in the form in which it is used and under the conditions anticipated, will not aid combustion or add appreciable heat to an ambient fire. Materials, where tested in accordance with ASTM E 136, *Standard Test Method for Behavior of Materials in a Vertical Tube Furnace at 750°C*, and conforming to the criteria contained in Section 7 of ASTM E 136 shall be considered as noncombustible.

Shall. Indicates a mandatory requirement.

1-3 Application of Standard.

1-3.1 This standard shall be applied to new construction and new equipment, as determined by the authority having jurisdiction.

1-3.2 This standard shall not require the alteration or replacement of existing construction or equipment currently in use, provided that the owner establishes appropriate administrative, maintenance, and training programs that provide equivalent safety.

1-3.3 It is recognized that there are many different incineration technologies and designs. There also is a wide variation in the types of waste that can be incinerated, including solids, liquids, sludges, and fumes. This standard is not intended to cover or include all of the design and construction details for each incineration technology and application. However, all design, construction, control, and other features needed to reduce or minimize fire hazards shall be required for all new incineration facilities to satisfy the authority having jurisdiction.

1-3.4 It is recognized that there are many different types of systems, equipment, and components utilized for handling or transporting waste. This standard is not intended to cover or include all of the design and construction details for each waste handling system and application. However, all design, construction, control, and other features needed to reduce or minimize fire hazards shall be required for such systems to satisfy the authority having jurisdiction and to comply with other applicable standards.

1-3.5 Nothing in this standard is intended to prevent the use of new methods or devices, provided that sufficient technical data is submitted to the authority having jurisdiction to demonstrate that the proposed method or device is equivalent in quality, strength, fire endurance, effectiveness, durability, and safety to that prescribed by this standard.

Chapter 2 Incinerators

2-1 General.

2-1.1 Provision for Auxiliary Fuel. Gas-burning installations shall be in accordance with the applicable provisions of NFPA 54, *National Fuel Gas Code*, and NFPA 58, *Liquefied Petroleum Gas Code*. Oil-burning installations shall comply with NFPA 31, *Standard for the Installation of Oil-Burning Equipment*. Fuel burners of all incinerators shall be equipped with safety controls that will automatically shut off the fuel supply to the burner in the event the burner fails to ignite or its flame becomes extinguished or in the event of insufficient draft.

2-1.2 Electrical Supply. The electrical supply to an incinerator shall be installed in accordance with NFPA 70, *National Electrical Code*®.

2-1.3 Air for Combustion and Ventilation.

2-1.3.1 Provision shall be made for an adequate supply of air for combustion and ventilation to enter the room in which an incinerator is located. Fans shall be permitted to be installed to deliver air to the incinerator room, provided they are in operation whenever the incinerator is in use.

2-1.3.2 Rooms in which incinerators are installed shall be furnished air for combustion and ventilation by one of the following means:

- (a) A screened or louvered ventilator opening or other suitable air intake; if communicating to other parts of the building, the opening shall be protected by an approved fire damper.
- (b) A duct leading from the incinerator room to the outdoors.
- (c) A duct leading to a boiler or furnace room cut off as prescribed in 2-2.7 and provided with sufficient air supply for both rooms.

2-1.3.3 The opening or duct specified in 2-1.3.2 shall be sized so as to provide all air requirements, including those for waste combustion, auxiliary fuel combustion, room temperature control, and general area ventilation, where applicable.

2-1.3.4 Air ducts extending to or from an incinerator room through other parts of a building shall be constructed and installed in accordance with NFPA 90A, *Standard for the Installation of Air Conditioning and Ventilating Systems*.

2-1.4 Spark Arresters.

2-1.4.1 Spark arresters shall be installed on incinerator stacks.

Exception No. 1: Where a wet scrubber or other emission control system or component is installed between the incinerator and stack such that fly ash cannot pass directly from the incinerator to the stack.

Exception No. 2: Where other acceptable design and control features are in place that prevent the entrainment of fly ash from the incinerator to the stack under all operating conditions.

Exception No. 3: Where the nature of the waste being incinerated will not result in fly ash emissions.

2-1.4.2 The net free area of the arrester shall be not less than four times the net free area of the outlet of the chimney flue it serves.

2-1.4.3 Arresters shall have a vertical height of not less than 1.3 times the minimum diameter of the chimney flue or the minimum horizontal dimension of a rectangular chimney flue.

2-1.4.4 Arresters, including bolts, rivets, screws, and supporting members, shall be made of heat- and corrosion-resistant materials.

2-1.4.5 Openings shall not permit the passage of spheres having a diameter larger than $1\frac{1}{2}$ in. (13.7 mm) nor block the passage of spheres having a diameter of less than $\frac{3}{8}$ in. (9.5 mm).

2-1.4.6 Means shall be provided for securely attaching the spark arresters to chimneys to provide adequate support and prevent movement of the arrester.

2-1.4.7 Spark screens shall be replaceable.

2-2 Commercial-Institutional Incinerators.

2-2.1 Definition. A commercial-institutional incinerator as used in this section refers to an incinerator predominantly designed for burning solid waste. The most applicable systems under this definition include, but are not limited to, controlled air, rotary kiln, and multiple chamber-type incineration systems.

2-2.2 Design and Construction.

2-2.2.1 The design and construction of the incinerator and all associated components shall be such that, in service, they will not crack, warp, or otherwise fail structurally so as to permit flame passage or emission of combustion gases or sparks into the building.

2-2.2.2 Explosion relief shall be provided. The area of explosion relief shall be not less than 1 ft² (0.09 m²) of relief area for every 100 ft³ (3 m³) of primary combustion chamber volume. Where the exhaust chimney will not serve the above purpose, a door or panel shall be provided and arranged to allow the door or panel to return to a closed position promptly after pressure has been released.

2-2.2.2.1 Exhaust stack areas that are typically closed off with valving or stack caps for directing combustion-gas effluent to other process equipment, such as heat recovery boilers, cleanup equipment, or similar installations, shall not be used in the calculation of the explosion venting area specified in 2-2.2.2.

2-2.2.2.2 Systems equipped with wet ash-type removal modules wherein 1) a water seal exists between the outside and the incinerator chamber atmosphere and where this water seal does not exceed the equivalent of 6 in. water column (1.49 kPa) and 2) where the interconnecting passageway between the internal ash port and external ash removal device is vertically oriented directly beneath the ash port without changes in direction shall be permitted to be considered to offer an explosion relief area for the minimum required area, based on the following:

- (a) Internal dimensions of the ash port
- (b) Smallest internal dimensions of the connecting and vertical passageway
- (c) Normal projected area of the water surface interface

2-2.2.2.3 Wet ash systems wherein ash is expelled by mechanical devices necessitating a normal change in direction of ash flow—that is, from vertical to horizontal—shall not be considered to provide an effective explosion relief area.

2-2.2.2.4 All explosion relief devices shall be oriented on the incinerator chamber so as not to be closer than 90 degrees in side elevation or plan view to the normal operator position.

2-2.2.2.5 All explosion relief devices shall be placed in areas generally inaccessible to normal personnel activities and shall be properly guarded and posted with safety signs on all sides indicating the potential safety hazard of the vent area.

2-2.2.3 Commercial-institutional incinerators shall be built in accordance with the following requirements:

(a) All combustion shall take place within the combustion chamber designed for combustion temperatures. Combustion shall not take place in breeching or chimneys unless they are designed as combustion chambers.

(b) Incinerators designed for positive pressures shall be gastight.

(c) The combustion chamber, inner walls, roofs, bridges, walls, and curtain walls shall be constructed so as to withstand the combustion temperatures involved and shall maintain their integrity under all operating conditions. Metal stays, lintels, or other supports shall not be exposed to the interior of the combustion chamber.

(d) An exterior masonry casing shall be reinforced with structural steel framework, and an exterior steel casing shall be reinforced with structural steel members such that the casing will withstand interior thrusts from arches and shall be capable of supporting all doors and burner equipment. The steel casing or framework shall be erected and set plumb before any brickwork is done. Cylindrical outer casings made of steel not less than 1/4 in. (6.4 mm) thick shall not be required to be reinforced. All incinerator structures shall be designed to comply with applicable building codes, and consideration shall be given to the most adverse conditions of seismic, wind, dead, live, moving, concentrated, erection, and thermal loadings; corrosion allowance; or combinations thereof.

(e) Openings shall be provided so that all parts of the incinerator can be cleaned, including the ash pit, the combustion chamber, the passes of separation chambers, and the incinerator flue. Cleanouts shall be closed by tight-fitting doors or covers, securely latched, or otherwise held in a closed position. Ash pit and combustion chamber closures and frames shall be of cast iron or equivalent, with the frames securely attached to the incinerator.

2-2.2.4 No part of an incinerator shall be used as a wall, roof, or floor of a building.

2-2.2.5 Incinerators shall be designed with internal insulation or refractory or shall be otherwise protected by location, guard rails, or shields such that all areas or surfaces normally accessible to personnel shall not exceed 160°F (71.1°C). External insulation over incinerator shells shall not be utilized in achieving this specified temperature, since severe thermal damage could result. Handles of operating doors shall not exceed a 40°F (4.4°C) rise for metallic and a 60°F (15.6°C) rise for nonmetallic.

2-2.3 Placement.

2-2.3.1 Commercial-institutional incinerators shall be placed on properly designed foundations of masonry or reinforced concrete or on noncombustible material having a fire resistance rating of not less than 3 hours, provided such support is independent of the building construction and the load is transferred to the ground.

2-2.3.2 All incinerator combustion chambers shall be elevated above concrete bearing surfaces through the use of pedestals, cradles, skids, or other means to provide a minimum of 4 in. (101.6 mm) clear air circulation space between the concrete

bearing surface and the closest surface of the underside of the combustion chamber. Where this elevation is not practical, as in the case of large field-erected incinerators, other equivalent means shall be provided through the use of increased insulation, natural or forced circulation, or other methods acceptable to the authority having jurisdiction in order to adequately protect the concrete bearing surfaces from thermal damage.

2-2.4 Clearances.

2-2.4.1 Commercial-institutional incinerators shall be installed to provide a clearance to combustible material of not less than 36 in. (914 mm) at the sides and rear, not less than 48 in. (1220 mm) above, and not less than 8 ft (2.4 m) at the front of the incinerator.

Exception: For a commercial-institutional incinerator encased in brick, the clearance shall be permitted to be 36 in. (914 mm) above the incinerator and 18 in. (457 mm) at the sides and rear of the incinerator.

2-2.4.2 A clearance of not less than 12 in. (305 mm) shall be provided from the incinerator to the walls or ceilings of noncombustible construction.

Exception: A clearance of not less than 3 in. (76.2 mm) shall be permitted to be provided from commercial and industrial incinerators to walls or ceilings of noncombustible construction where it is not possible to place combustible material on the outer or upper side thereof.

2-2.4.3 Incinerators that are listed specifically for installation at lesser clearances than specified in 2-2.4.1 and 2-2.4.2 shall be installed in accordance with the conditions of such listing, provided that, in any case, the clearances shall be sufficient to afford accessibility for firing, cleanout, and any necessary servicing as set forth in 2-2.4.4.

2-2.4.4 Sufficient space shall be provided around the incinerator and its appurtenances to facilitate cleaning, repairing, and servicing. Clearance shall be provided to allow the cleanout doors to be opened completely so that all parts of the combustion chamber, ash pit, separation chambers, and so forth, can be reached and so that implements used for this purpose can be freely manipulated. All dampers, gates, burners, valves, levers, and so forth, shall be accessible for repair and adjustment or replacement. No construction shall be located closer than 16 in. (406 mm) to any part of an incinerator.

Exception: Noncombustible structural members 2 ft (610 mm) wide or less, parallel to the incinerator, shall be permitted to be located as close as 6 in. (152 mm) to the incinerator, provided such members do not reduce accessibility to any moving parts of the incinerator.

2-2.5 Incinerator Charging.

2-2.5.1 A waste charging system and appropriate controls shall be provided to prevent the direct discharge of flames, combustion gases, and heat from the incinerator during waste loading operations. This shall include a hopper/ram type mechanical loader or other approved system.

Exception: Incinerators that are loaded on a batch basis, during which the charging door is not open while waste combustion is taking place, shall not be required to have a mechanical charging system.

2-2.5.2 The combustion chamber of a commercial-institutional-type incinerator shall not be charged through the floor immediately above such incinerator unless the charging chute is designed with dampering and controls that would prevent

the direct passage of combustion products and radiant heat through the chute into the charging room.

2-2.5.3 The charging hood and chute shall be constructed of not less than 12 U.S. gauge steel casing and shall be lined with not less than 4¹/₂ in. (114 mm) of firebrick (Type F, medium duty, or the equivalent as defined in ASTM C 27, *Standard Classification for Fire Clay and High-Alumina Refractory Brick*). This charging hopper shall not exceed 6 ft (1.8 m) in length, measured from the floor opening to the outside of the roof of the incinerator combustion chamber.

Exception: The charging hood and chute shall be permitted to exceed 6 ft (1.8 m) in length if approved means are provided to prevent the charging hood and chute from discharging gases resulting from combustion into the charging room.

2-2.5.4 The charging opening shall be protected by a cover extending beyond the edges of the opening for at least 2 in. (51 mm) on all sides and lined with not less than 2¹/₂ in. (63.5 mm) of refractory material.

2-2.5.5 The charging-floor opening shall be located in a room with walls and floor and ceiling assemblies that have a fire resistance rating of not less than 2 hours, with openings protected by approved self-closing or automatic-closing 3-hour fire doors suitable for Class A openings. Such doors shall be kept closed during the charging operation and at other times, except when delivering waste material to the room.

Exception: Where the room is protected by an approved system of automatic sprinklers, the walls and floor and ceiling assemblies shall be permitted to have a fire resistance rating of not less than 1 hour, and the door shall be permitted to be a 1¹/₂-hour fire door approved for Class B openings.

2-2.6 Incinerator Residue Removal. A system and appropriate approved measures shall be provided to adequately quench or fully contain, or both, ash residues removed from the incinerator during cleanout operations. These shall include such features as water sprays, a wet quench pit, or a special containment enclosure to enable ash cleanout with minimal exposure to ambient conditions.

2-2.7 Incinerator Rooms for Commercial-Institutional Incinerators.

2-2.7.1 Commercial-institutional incinerators shall be enclosed within a room separated from other parts of the building by walls, partitions, floor, and floor-ceiling assemblies constructed of noncombustible material and having a fire resistance rating of not less than 2 hours and used for no other purpose.

Exception: Storage containers of waste material to be burned and building heating equipment shall be permitted to be located in the incinerator room.

2-2.7.2 Door(s) or other openings in rooms containing incinerators that communicate with other areas of the building shall be protected by approved self-closing or automatic-closing 1¹/₂-hour fire doors suitable for Class B openings.

2-2.7.3 Automatic sprinklers shall be provided in incinerator rooms in accordance with NFPA 13, *Standard for the Installation of Sprinkler Systems*.

2-2.8* Chimneys for Commercial-Institutional Incinerators.

2-2.8.1 General.

2-2.8.1.1 The chimney for an incinerator shall serve the incinerator only, unless the chimney construction is acceptable for incinerator gases and the controls are suitable for the incinerator and the other device being served. The chimney shall be designed and proportioned to provide adequate draft for proper operation of the incinerator.

2-2.8.1.2 Chimneys shall be supported on properly designed foundations of masonry or reinforced portland or refractory cement concrete. They shall be constructed so as not to place excessive stress on the roof of the combustion chamber. If incinerator walls are to support the chimney, the foundation and walls shall be built to support the load imposed.

Exception: Masonry chimneys shall be permitted to be supported on noncombustible material having a fire resistance rating of not less than 3 hours where such supports are independent of the building construction and the load is transferred to the ground.

2-2.8.1.3 A factory-built chimney, if so listed, and a metal chimney also shall be permitted to be supported at intervals by the building structure, in which case expansion joints shall be provided at each support level. All joints shall be liquidtight or of a design such that liquid will drain to the interior of the chimney.

2-2.8.1.4 Cleanout openings provided in chimneys shall be equipped with ferrous metal doors and frames arranged to remain tightly closed when not in use. A clearance of not less than 36 in. (914 mm) shall be provided between cleanout doors and combustible material.

2-2.8.1.5 Drains shall be provided at the base of all chimneys to allow the removal of condensed flue products and shall be designed to avoid clogging.

2-2.8.1.6 Breechings shall be designed or otherwise protected in an approved manner, such as by guard rails or shields, to protect personnel from accidental contact with surfaces that exceed 160°F (71.1°C). External insulation shall not be used on hot breechings.

2-2.8.2 Listed Medium-Heat Chimneys. Listed medium-heat appliance chimneys shall be permitted to be used and shall be installed in accordance with the conditions of the listing and the manufacturer's instructions.

2-2.8.3 Metal Chimneys.

2-2.8.3.1 Where secondary combustion temperatures do not exceed 1800°F (982°C), metal chimneys shall be lined with 4¹/₂ in. (114 mm) of high-duty, spall-resistant firebrick (as defined in ASTM C 27, *Standard Classification for Fireclay and High-Alumina Refractory Brick*) laid in high-duty refractory mortar (as defined in ASTM C 199, *Standard Test Method for Pier Test for Refractory Mortars*). The lining shall start at the base of the chimney and extend continuously to the top. Equivalent linings of equivalent thickness, such as Class A or better alumina-silica base castable refractories or Class O or better insulating castable refractories, shall be permitted to be used. Equivalent thickness shall be that thickness capable of providing the same insulating and structural values to limit skin temperatures to those temperatures specified in 2-2.2.5 under all intended operating conditions.

2-2.8.3.2 Where secondary combustion temperatures exceed 1800°F (982°C), metal chimneys shall be lined with 4¹/₂ in. (114 mm) of super-duty, spall-resistant refractory brick (as defined in ASTM C 27, *Standard Classification for Fireclay and High-Alumina Refractory Brick*) laid in refractory mortar. The refractory mortar shall be high-duty for temperatures up to 2730°F (1500°C) and super-duty or better for temperatures up to 2910°F (1600°C). The lining shall start at the base of the chimney and extend continuously to the top. Equivalent linings of equivalent thickness, such as Class B or better alumina-silica base castable refractories (as defined in ASTM C 27) in accordance with temperature requirements or Class P and Class Q insulating castable refractories (as defined in ASTM C 27) in accordance with temperature requirements, shall be permitted to be used. Equivalent thickness shall be that thickness capable of providing the same insulating and structural values to limit skin temperatures to those temperatures specified in 2-2.2.5 under all intended operating conditions.

2-2.8.3.3 Castable plastic refractories, or other refractories, shall be permitted to be used in metal chimneys in lieu of firebrick, provided such refractory is of equivalent heat and corrosion resistance. Liners made of these refractories shall be supported by anchors made of corrosion-resistant steel capable of supporting the refractory load at 1500°F (727°C). The insulating value shall be such that temperatures at the supports shall not exceed this temperature under all firing conditions.

2-2.8.3.4 Metal chimneys shall be properly riveted or welded, securely supported, and constructed in accordance with good engineering practice.

2-2.8.3.5 Metal chimneys shall be constructed of steel or cast iron. Sheet steel shall have a thickness not less than that indicated in Table 2-2.8.3.5.

2-2.8.3.6 Metal chimneys shall be properly riveted, welded, or bolted; securely supported; and constructed in accordance with good engineering practice as necessary to achieve the following conditions:

- (a) Strength to resist stresses due to steady or gusting wind loads
- (b) Adequate anchoring, bracing, and inherent strength to withstand seismic and wind-induced vibrational stresses
- (c) Proper material thickness for durability, considering fuel analysis, gas temperature, and exposure
- (d) Security against leakage of flue gases under positive pressure

- (e) Allowance for thermal expansion of breeching and vertical sections

2-2.8.3.7 If a metal chimney extends through any story of a building above that in which the connected incinerator is located, it shall be enclosed in such upper stories within continuous walls that are constructed of noncombustible materials, such as masonry (*see Section 1-2*), and that extend from the ceiling of the incinerator room to or through the roof so as to retain the integrity of the fire separations as required by applicable building code provisions. The walls shall have a fire resistance rating of not less than 1 hour if the building is less than 4 stories in height, or not less than 2 hours if the building is 4 or more stories in height, and shall conform to the following:

- (a) The enclosure shall provide a space on all sides of the chimney sufficient to permit inspection and repair, but in no case shall the space be less than 12 in. (305 mm).
- (b) The enclosing walls shall be without openings.

Exception: Doorways equipped with approved self-closing 1¹/₂-hour fire doors approved for Class B openings shall be permitted to be installed at various floor levels for inspection purposes.

2-2.8.4 Masonry Chimneys.

2-2.8.4.1 Where secondary combustion temperatures do not exceed 1800°F (982°C), masonry chimneys shall be constructed of solid masonry units or reinforced concrete with walls not less than 8 in. (203 mm) thick. Such walls shall be lined with 4¹/₂-in. (114-mm) high-duty, spall-resistant firebrick (as defined in ASTM C 27, *Standard Classification for Fireclay and High-Alumina Refractory Brick*) laid in high-duty refractory mortar (as defined in ASTM C 199, *Standard Test Method for Pier Test for Refractory Mortars*). The lining shall start at the base of the chimney and extend continuously to the top.

2-2.8.4.2 Where secondary combustion temperatures exceed 1800°F (982°C), masonry chimneys shall be constructed with double walls of solid masonry units or reinforced concrete. Each wall shall not be less than 8 in. (203 mm) thick with an air space of not less than 2 in. (51 mm) between them. The inside of the interior wall shall be lined with 4¹/₂-in. (114-mm) super-duty, spall-resistant firebrick laid in super-duty refractory mortar (as defined in ASTM C 27). The lining shall start at the base of the chimney and extend continuously to the top.

2-2.8.4.3 Masonry chimneys shall be proved airtight by a smoke test after erection and before being put into service.

Table 2-2.8.3.5 Minimum Thickness of Sheet Steel Chimneys

Manufacturer Standard Gauge Number	Minimum Thickness		Area		Equivalent Round Diameter	
	in.	mm	in. ²	m ²	in.	mm
16	0.054	1.37	up to 154	up to 0.0999	up to 14	up to 356
14	0.069	1.75	155 to 201	0.0999 to 0.1296	over 14 to 16	over 356 to 406
12	0.098	2.49	202 to 254	0.1303 to 0.1638	over 16 to 18	over 406 to 457
10	0.128	3.25	Larger than 254	Larger than 0.1638	over 18	over 457

Note: Regardless of minimums in this table, the thickness of sheet metal shall be adequate to meet the requirements of 2-2.8.3.6.

2-2.9 Chimney Clearances.

2-2.9.1 Listed chimneys shall be installed in accordance with the conditions of the manufacturer's instructions for clearances. Exposed portions of chimneys or breechings that can be touched shall be so designed that maximum surface temperatures shall not exceed 70°F (39°C) above ambient temperature.

2-2.9.2 Masonry Chimneys. A clearance of not less than 4 in. (102 mm) shall be provided between the exterior surface of masonry chimneys and combustible material.

2-2.9.3 Exterior Metal Chimneys.

2-2.9.3.1 Exterior metal chimneys shall have a clearance of not less than 24 in. (610 mm) from a wall of wood frame construction and from any combustible material.

2-2.9.3.2 Exterior metal chimneys over 18 in. (457 mm) in diameter shall have a clearance of not less than 4 in. (102 mm), and those chimneys 18 in. (457 mm) or less in diameter shall have a clearance of not less than 2 in. (51 mm) from a building wall of other than wood frame construction.

2-2.9.3.3 An exterior metal chimney shall be installed with a minimum clearance of 24 in. (610 mm) to any door or window or to any walkway, unless insulated or shielded in an approved manner to prevent a person from coming in contact with the chimney.

2-2.9.4 Interior Metal Chimneys.

2-2.9.4.1 Within the same story of a building as that in which an incinerator is located, a metal chimney shall have a clearance of not less than 36 in. (914 mm) from a wall of wood frame construction and from any combustible material. Such interior metal chimneys over 18 in. (457 mm) in outside diameter shall have a clearance of not less than 4 in. (102 mm), and those 18 in. (457 mm) or less in outside diameter shall have a clearance of not less than 2 in. (51 mm) from a building wall of other than wood frame construction.

2-2.9.4.2 If a metal chimney passes through a roof constructed of combustible material, it shall be guarded by a ventilating thimble of galvanized iron or approved corrosion-resistant metal, extending not less than 9 in. (229 mm) below and 9 in. (229 mm) above the roof construction, and shall be of a size to provide not less than 18 in. (457 mm) clearance on all sides of the chimney.

2-2.10 Low-Temperature Chimneys and Breechings. Incinerator chimneys and breechings designed to handle saturated flue gases or flue gases with condensed acids shall be designed and constructed to be corrosion resistant and capable of handling aggressive flue acids under all operating conditions. Such materials can include fiberglass reinforced plastic (FRP), refractories, and mortars of special acid-resistant composition or specialized metals, such as Hastelloy or Inconel. (See A-2-2.8 for further discussion.)

2-2.11 Chimney Termination.

2-2.11.1 Incinerator chimneys where the secondary combustion chamber is designed to be operated at 1800°F (982°C) or less shall extend not less than 10 ft (3.1 m) higher than any portion of any building within 25 ft (7.5 m).

Exception: Chimneys less than 10 ft (3.1 m) higher than other chimneys, vents, or open structural framing.

2-2.11.2 Incinerator chimneys where the secondary combustion chamber is designed to be operated at over 1800°F (982°C) shall

extend not less than 20 ft (6.2 m) higher than any portion of any building within 50 ft (15 m).

Exception: Chimneys less than 10 ft (3.1 m) higher than other chimneys, vents, or open structural framing.

2-2.11.3 The terminus of the chimney flue for the incinerator shall be equipped with an approved spark arrester if the incinerator does not include effective means for arresting sparks and fly ash (see 2-1.4).

Exception: Where the system complies with the conditions of 2-1.4.1.

2-2.12 Chimney Connector or Breeching.

2-2.12.1 A chimney connector or breeching connecting a commercial-institutional-type incinerator to a chimney shall be constructed of not lighter than 16 U.S. gauge steel if it is 12 in. (305 mm) or less in diameter or greatest cross-section dimension, and of not lighter than 12 U.S. gauge steel if it exceeds 12 in. (305 mm) in diameter or greatest cross-section dimension.

Exception: Breechings that utilize listed medium-heat chimney sections, provided these sections are joined together with continuous welds, flanges, or couplings.

2-2.12.2 Chimney connectors or breeching up to 18 in. (457 mm) in diameter or greatest cross-section dimension shall be lined with not less than 2¹/₂-in. (63.5-mm) high-duty, spall-resistant refractory brick (as defined in ASTM C 27).

2-2.12.3 Chimney connectors or breeching over 18 in. (457 mm) in diameter or greatest cross-section dimension shall be lined with not less than 4¹/₂-in. (114-mm) of high-duty, spall-resistant refractory brick (as defined in ASTM C 27).

2-2.12.4 Castable plastic refractories, or other refractories, shall be permitted to be used in lieu of firebrick, provided such refractory is of equivalent heat and corrosion resistance. Liners made of these refractories shall be supported by anchors made of corrosion-resistant steel capable of supporting the refractory load at 1500°F (727°C). The insulating value shall be such that temperatures at the supports shall not exceed this temperature under all firing conditions.

2-2.12.5 The net internal free area of the connector shall be not less than the free area of the flue collar of the incinerator.

2-2.12.6 A chimney connector shall not be enclosed. The connector shall be readily accessible for inspection and replacement throughout its entire length.

2-2.12.7* Chimney connectors or breechings of all commercial-institutional-type incinerators, including those of special design to produce low-temperature flue-gases, shall conform with 2-2.12.

2-2.12.8 If a gas washer or scrubber is used, or if other arrangements are such that the natural draft is insufficient for proper operation of the incinerator, a draft inducer shall be permitted to be used. In this event, the chimney shall be sized for natural-draft operation and a bypass installed around the gas washer or scrubber or other unit that requires the draft induction. Suitable, normally open dampers shall be installed in the bypass to allow venting of combustion products in the event of power failure.

2-2.12.9 Expansion joints shall be provided as required.

2-3 Outdoor Incinerators. All outdoor incinerators shall conform with this chapter, depending upon use.

Chapter 3 Waste and Linen Chutes and Transport Systems

3-1 Definitions. The three types of systems approved to handle waste and linen, each with separate fire safety criteria, are defined in 3-1.1 through 3-1.3.

3-1.1 Gravity Waste or Linen Chutes. An enclosed vertical passageway (riser) in a building, used for transferring trash or linen by gravity to a room at the bottom or to an interface to a compactor. A gravity chute also can be used to interface with a pneumatic transport system. Access of chute intake doors might or might not be limited to the use of keys.

3-1.2 Full Pneumatic Waste or Linen Conveying Systems. A closed system consisting of loading stations with inner doors and a fire-rated, normally locked, outer (intake) door; normally closed air damper above the topmost loading station; transport piping, both vertical and horizontal; waste or linen collector; fan with a fan damper; and a central process controller.

3-1.3 Gravity Pneumatic Waste or Linen Conveying Systems. A system using a combination of the gravity waste or linen chutes defined in 3-1.1 and a pneumatic conveying system that receives the material from the chute by gravity. This system consists of gravity chutes; a material damper to interface between the chute and the transport piping; the transport pipe; waste or linen collector; fan with fan damper; and a central process controller.

3-2 Gravity Waste or Linen Chutes.

3-2.1 General. General access gravity chutes shall be permitted to be supplied with unlocked doors and shall be permitted to be available to all occupants at all times. A trash or linen gravity chute shall be permitted to be installed as a limited access gravity chute by installing a key in either the chute intake door or the entry door into the service room. Limited access waste chutes shall be installed so that they can be used only by authorized personnel. A gravity waste or linen chute also shall be permitted to be used to interface with a pneumatic transport system.

3-2.2 Construction.

3-2.2.1 Chute Supports. A steel or steel jacketed refractory chute supported at intervals by the building structure shall be provided with expansion joints between support levels. Other chutes shall be supported on a substantial noncombustible foundation.

3-2.2.2 Chute Offsets. Gravity metal chutes shall be constructed straight and plumb where allowed by the building configuration. Gravity metal chutes shall be permitted to be offset a maximum of 15 degrees from plumb with the approval of the authority having jurisdiction. Offsets shall be limited to a maximum of one offset for every two floors. A single offset shall be completed (returned to vertical) between floors. No access door shall be less than 4 ft (1.2 m) above an offset. (See Figure 3-2.2.2.)

The portion of chute between the highest loading door and the chute termination shall be permitted to be offset a maximum of 45 degrees from the plumb, subject to the approval of the authority having jurisdiction.

3-2.2.3 Standard Diameter of Waste and Linen Gravity Chutes.

Standard waste gravity chutes shall be a minimum of 24 in. (610 mm) in diameter. Standard linen gravity chutes shall be a minimum of 20 in. (508 mm) in diameter.

3-2.2.4 Chute Venting. A waste or linen chute shall extend (full size) at least 3 ft (0.92 m) above the roof of the building. The

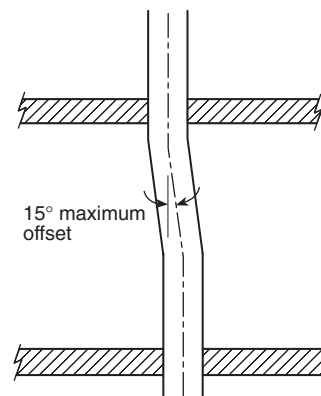


Figure 3-2.2.2 Gravity metal chute; maximum offset.

chute shall be open to the atmosphere with the opening being the same cross-sectional area as the chute.

Exception: The chute can be less than 3 ft (0.92 m) above the roof of a building of Type I, Type II-222, or Type II-111 construction subject to the approval of the authority having jurisdiction.

3-2.2.5 Masonry Waste Chutes. Masonry waste chutes shall be constructed of clay or shale brickwork not less than 8 in. (203 mm) thick or of reinforced concrete not less than 6 in. (152 mm) thick. Such chutes shall be lined with low-duty refractory brick (as defined in ASTM C 27) not less than 4 1/2 in. (114 mm) thick. Equivalent construction with walls providing a 2-hour fire resistance rating with equivalent structural features shall be acceptable.

3-2.2.6 Lined Metal Waste Chutes. Metal waste chutes shall be permitted to be lined with low-duty refractory brick (as defined in ASTM C 27) not less than 2 1/2 in. (63.5 mm) thick or equivalent castable refractories. All unlined steel chutes shall be protected internally by automatic sprinklers. (See 3-2.5.1.)

3-2.2.7 Chute Wall Thickness. Metal waste or linen chutes shall be made of stainless steel, galvanized steel, or aluminum-coated steel with no screws, rivets, or other projections on the interior surface of the chute. Laps or joints shall be designed so that the liquid will drain to the interior of the chute. The steel shall not be lighter than 16 U.S. gauge. Special waste chutes designed to handle dense or heavy material over 10 lb/ft³ (1500 kg/m³) shall be made of steel not lighter than 14 U.S. gauge.

3-2.2.8 Medium-Heat Chimneys. Listed medium-heat appliance chimney sections shall be acceptable for use as trash chutes.

3-2.2.9 Chute Discharge Doors. Gravity chutes shall be constructed so that the base opening of the chute or shaft, or both, shall be protected by an approved automatic-closing or self-closing 1-hour fire door suitable for a Class B opening.

3-2.3 Chute Enclosure (Chase). Vertical waste or linen chutes in all stories above the storage or compacting room shall be enclosed within a continuous enclosure constructed of noncombustible materials and extending from the ceiling of the storage or compacting room to or through the roof so as to retain the integrity of the fire separation. The walls of the enclosure, or the walls of the masonry chute, shall have a fire resistance rating of not less than 1 hour if the building is less than 4 stories in height and not less than 2 hours if the building is 4 or more stories in height.

Exception No. 1: Masonry chutes conforming to 3-2.2.5, or those constructed of masonry walls having a fire resistance rating not less than specified in 3-2.3, shall not be required to be enclosed.

Exception No. 2: In buildings protected throughout by a supervised automatic sprinkler system, vertical chutes shall be permitted to be enclosed with limited-combustible materials.

3-2.4 Chute Loading Doors.

3-2.4.1 General Access Gravity Waste Chutes. All chute loading doors into a waste chute shall be provided with a self-closing, positive latching frame and gasketed fire door assembly approved for Class B openings and having a fire resistance rating of not less than 1 hour. The door frame shall be fastened into the chute and the shaft wall. The design and installation shall be such that no part of the frame or door projects into the chute.

The area of each chute loading door shall be limited to one-third of the cross-sectional area of a square chute and 44 percent of the area of a round chute.

3-2.4.2 Limited Access Gravity Chutes. All chute loading doors into a linen or waste chute shall be provided with a self-closing, positive-latching frame and gasketed fire door assembly approved for Class B openings and having a rating of not less than 1 hour. The door frame shall be fastened into the chute and the shaft wall. The design and installation shall be such that no part of the frame or door projects into the chute. A key shall be required to open the door.

The area of each waste chute loading door shall be limited to two-thirds of the cross-sectional area of the chute. The area of each linen chute loading door shall not exceed the cross-sectional area of the chute.

3-2.4.3 Service Opening Rooms. Every service opening shall be in a room or compartment that is separated from the other parts of the building by a wall, partition, floor, and floor-ceiling assemblies having a fire resistance rating of not less than the required rating of the chute enclosure. Openings into such a room or compartment shall be protected by approved self-closing doors that

are appropriate for protecting the openings and suitable for Class B openings, or not less than 1-hour partition rating with a $\frac{3}{4}$ -hour door.

3-2.4.3.1 The size of the service opening room or compartment shall not be less than that required to maintain a minimum 6 in. (152.4 mm) clearance between the open loading door and the closed service opening room door.

3-2.4.3.2 Service Opening Room Key. If entrance to a limited-access service opening is gained by key, the service opening door shall not require a key to be opened. One opening or the other shall be keyed. Keying shall be required only for limited-access installations.

3-2.5 Chute Automatic Sprinklers.

3-2.5.1 Gravity Chute. Gravity chutes shall be protected internally by automatic sprinklers. This protection requires that a sprinkler be installed at or above the top service opening of the chute. In addition, a sprinkler shall be installed within the chute at alternate floor levels in buildings over two stories in height with a mandatory sprinkler located at the lowest service level. Sprinkler system installation shall comply with NFPA 13, *Standard for the Installation of Sprinkler Systems*. (See Figure 3-2.5.1.)

Exception No. 1: Lined masonry chute that complies with 3-2.2.5.

Exception No. 2: Lined metal chute that complies with 3-2.2.6.

Exception No. 3: Listed medium-heat chimney that complies with 3-2.2.8.

3-2.5.2 Chute Sprinkler Head Protection. Automatic sprinklers installed in gravity chute service openings shall be recessed out of the chute area through which the material travels.

3-2.6 Chute Discharge Rooms.

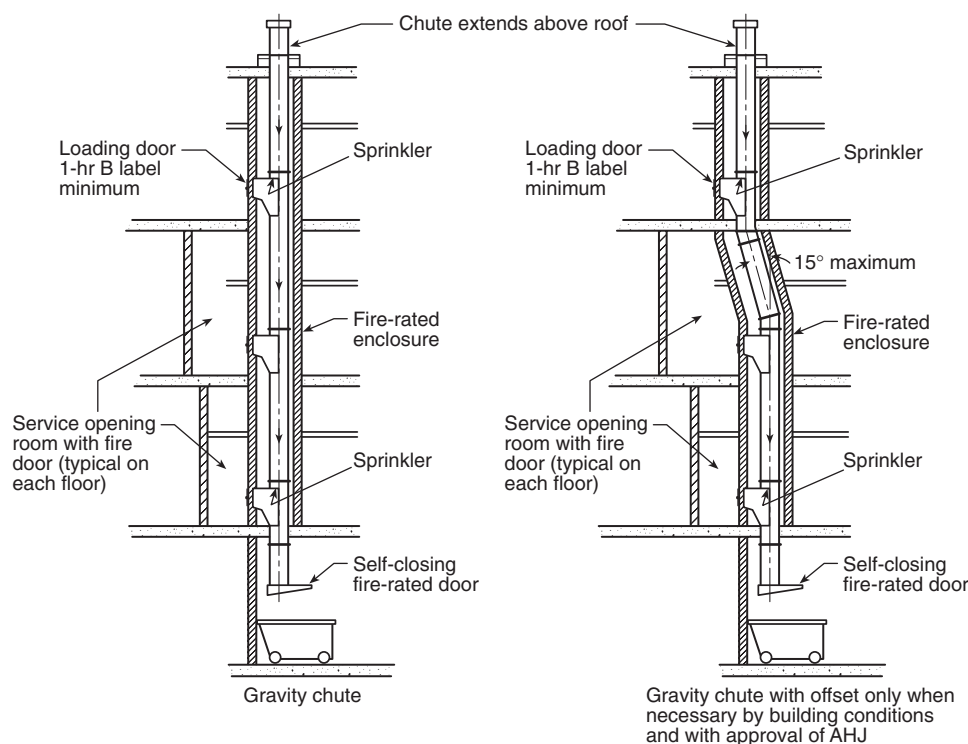


Figure 3-2.5.1 Gravity chute.

3-2.6.1 Chute Discharge Room Criteria. Waste and linen chutes shall terminate or discharge directly into a room having a minimum fire resistance rating not less than that specified for the chute. Openings to such rooms shall be protected by approved automatic-closing or self-closing 1½-hour fire doors suitable for Class B openings.

3-2.6.2 Chute Room Automatic Sprinklers. Automatic sprinklers shall be installed in chute terminal rooms.

3-2.6.3 Chute to Incinerator Interface. Trash gravity chutes shall not discharge directly into an incinerator.

3-3 Full Pneumatic Waste and Linen Conveying Systems.

3-3.1 General. A full pneumatic waste or linen transport system consists of full vacuum stations equipped with inner doors and a locked outer door, an air source at the top of the riser, an air inlet control damper, flanged riser piping, transport piping, collectors (receivers), and a fan and fan damper.

3-3.2 Construction, Full Pneumatic Waste and Linen Systems.

3-3.2.1 Full Pneumatic Waste or Linen Stations. Full vacuum loading stations shall be a minimum of 20 in. (508 mm) in diameter, shall have an inner door that is under processor control, and shall not yield under system vacuum. The outer (loading) door shall be provided with a gasketed, self-closing, positive-latching fire door and frame assembly approved for Class B openings and shall have a fire resistance rating of not less than 1½ hours. The door frame shall be fastened into the station and shall be flush with the rated shaft wall. Minimum outer door size shall be 18 in. × 18 in. (457.2 mm × 457.2 mm) and shall be side hinged. Full vacuum stations shall be constructed from a minimum of 14 gauge stainless or galvanized steel.

3-3.2.2 Multi-Bag Loading of Waste or Linen Systems. During the multi-bag loading procedure, both the outer and inner doors shall be permitted to be open. Only one inner door shall be open at a time.

3-3.2.3 Service Loading Rooms. Every loading station door shall be in a room or compartment that is separated from other parts of the building by walls, partitions, floor, and floor-ceiling assemblies having a fire resistance rating of not less than 1 hour. Openings into such a room or compartment shall be protected by approved self-closing fire doors suitable for Class B openings.

3-3.2.4 Full Pneumatic Riser Pipe. Full pneumatic riser pipe shall have a minimum diameter of 20 in. (508 mm) and shall be constructed from 16 gauge (minimum) stainless steel, or galvanized or aluminum coated steel with no screws, rivets, or other projections on the interior surface of the pipe. To avoid vacuum leaks, riser pipe shall be flanged, gasketed, and bolted.

3-3.2.5 Full Pneumatic Air Source. A full pneumatic system requires a full diameter air source for conveying materials on a moving air stream. The air source shall be a roof-vent and curb, an all-weather elbow, or a louver through the side of the building.

3-3.2.6 Full Vacuum Station Supports. Full vacuum stations shall be supported at each floor by mounting plates or steel channel that will bridge the shaft opening. Stations shall be bolted to prevent movement under transport conditions. On floors where no station is installed, the riser pipe shall be supported at each floor.

3-3.2.7 Full Pneumatic Riser Offsets. Full pneumatic risers shall be permitted to be offset to fit building design requirements.

3-3.3 Full Pneumatic Riser Enclosure (Chase).

3-3.3.1 General. Full pneumatic stations and vertical risers shall be mounted within a continuous enclosure constructed of materials that are noncombustible and that extend from floor to floor. The walls of the enclosure shall have a fire resistance rating of not less than 1 hour if the building is less than 4 stories in height and not less than 2 hours if the building is 4 or more stories in height. See 3-3.2.7 for offsets in full pneumatic riser piping.

3-3.3.2 Full Pneumatic Loading Doors. All full vacuum loading station outer doors shall be provided with a gasketed, self-closing, positive-latching fire door and frame assembly approved for Class B openings and shall have a fire resistance rating of not less than 1 hour. The door frame shall be installed onto the station and shall be set flush to the shaft wall. The width of the opening shall be permitted to be equivalent to the internal diameter of the chute, and the height shall be a maximum of one and a half times the diameter. Minimum door size for a waste or linen loading door shall be 18 in. × 18 in. (457.2 mm × 457.2 mm) and shall be side hinged.

3-3.4 Automatic Sprinklers, Full Pneumatic Systems. Full pneumatic-type risers shall be protected internally by automatic sprinklers. A sprinkler shall be required at or above the top loading station and at alternate floor levels in buildings over two stories in height, with a mandatory sprinkler located at the lowest loading station. Sprinklers shall be recessed out of the station area through which the material travels. Sprinkler system installation shall comply with NFPA 13, *Standard for the Installation of Sprinkler Systems*. (See Figure 3-3.4.)

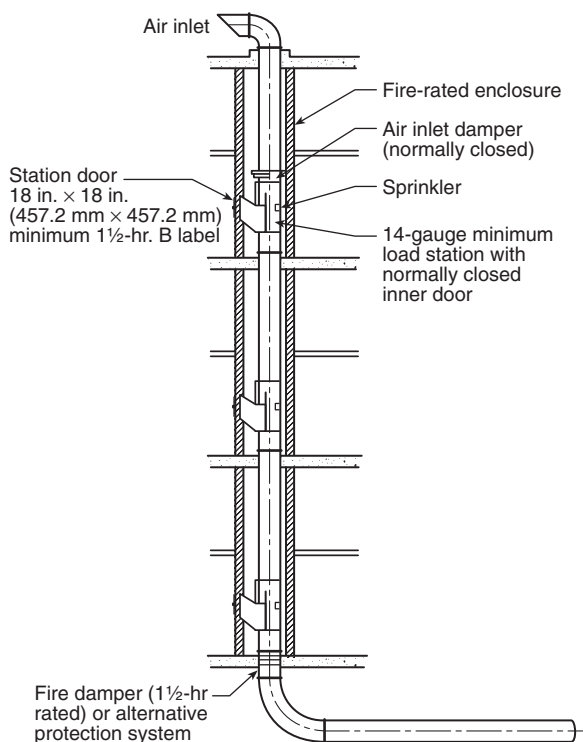


Figure 3-3.4 Full pneumatic system.

3-3.5 Transport Piping.

3-3.5.1 Transport Piping Size and Thickness. Transport piping shall have a minimum wall thickness of 16 U.S. gauge galvanized or stainless steel and shall be sized to fit the systems needs. Waste and linen transport systems shall be a minimum of 16 in. (406 mm) in diameter.

Exception: Where all materials entering the pneumatic-powered system are processed through a shredder, the transport pipe shall be permitted to be less than 16 in. (406 mm) in accordance with the authority having jurisdiction.

3-3.5.2* Penetrating Fire-Rated Walls. Automatic fire dampers shall be installed at all points where the waste or linen transport system penetrates fire-resistive partitions or floor assemblies. [See Figures 3-3.5.2(a) through (c).] The system shall shut down automatically upon closing one of the fire dampers.

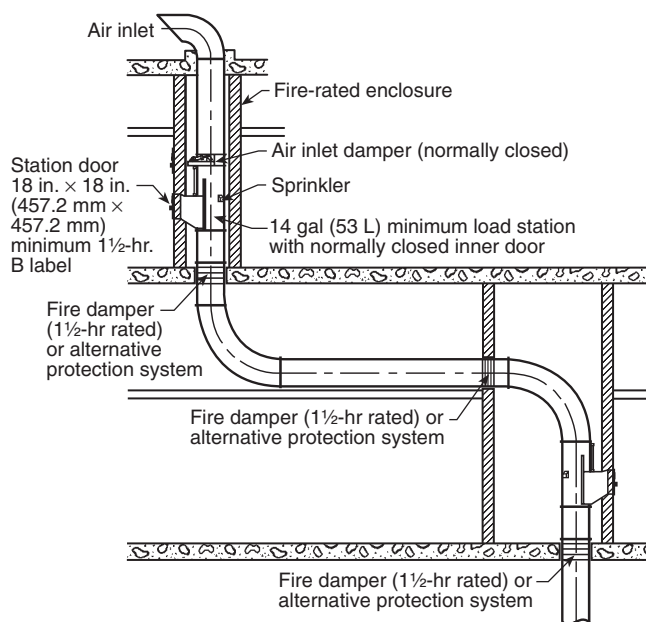


Figure 3-3.5.2(a) Full pneumatic riser with offset.

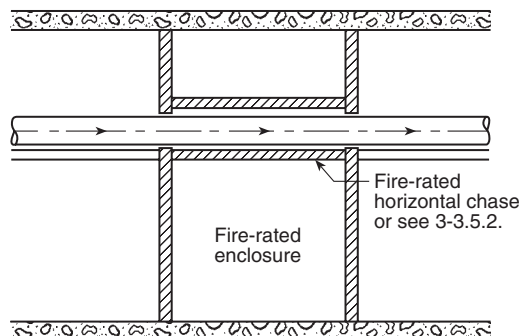


Figure 3-3.5.2(b) Full pneumatic system with penetration of an evacuation corridor.

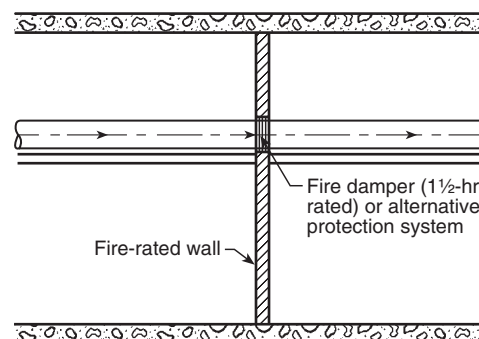


Figure 3-3.5.2(c) Full pneumatic system with penetration of a 2-hour fire-rated wall.

Exception: Fire dampers shall not be required where an engineered alternative system is provided that is acceptable to the authority having jurisdiction. (See authority having jurisdiction in Section 1-2.)

Examples of engineered alternative systems are included in Appendix A, Figures A-3-3.5.2(a) through (d). Other engineered alternative systems are acceptable if approved by the authority having jurisdiction.

3-3.5.3 Exiting from Two-Hour Fire-Rated Shafts. Where the pneumatic transport pipe exits a 2-hour fire-rated shaft, the pipe wall thickness shall be increased to 11 U.S. gauge from within the shaft to 4 pipe diameters beyond the shaft wall. The 11-gauge pipe shall be supported at 3-ft (0.92-m) intervals.

3-3.6 Full Pneumatic Collector Discharge Area. The room or area where the collector discharges waste or linen shall be separated from the occupied part of the building by a 2-hour fire-rated wall. The room or area shall be protected by a sprinkler system. Sprinkler system installation shall comply with NFPA 13, *Standard for the Installation of Sprinkler Systems*.

3-4 Gravity Pneumatic Trash or Linen Conveying System.

3-4.1 General. A gravity pneumatic transport system is a combination of a gravity chute and a horizontal pneumatic transport system. The gravity pneumatic system includes gravity chutes with a material discharge valve at the bottom, an air source at or near the bottom of the chute, air control dampers, horizontal piping with a pipe tee to connect to the chute, a collector, and a fan and fan damper. (See Figure 3-4.1.)

3-4.2 Construction.

3-4.2.1 Gravity Chutes. All the requirements of Section 3-2 shall apply to gravity pneumatic conveying systems. Where material is to be stored at the bottom of the chute and above the riser discharge damper (above the transport tee), automatic sprinklers shall be installed below the last service door on the chute. Where an open funnel is employed as an interface between the gravity chute storage section and the transport discharge damper, a normally closed, specially designed 11 U.S. gauge, blade-type damper shall be installed at the bottom of the chute and above the funnel opening.

3-4.2.2 Gravity Pneumatic Riser Discharge Damper. At the point of entry into the transport piping tee, a material discharge damper shall be required to close off the transport piping when that riser is not being sequenced.

3-4.2.3 Gravity Pneumatic Discharge Room Criteria. Where a gravity pneumatic system has any opening in the connection

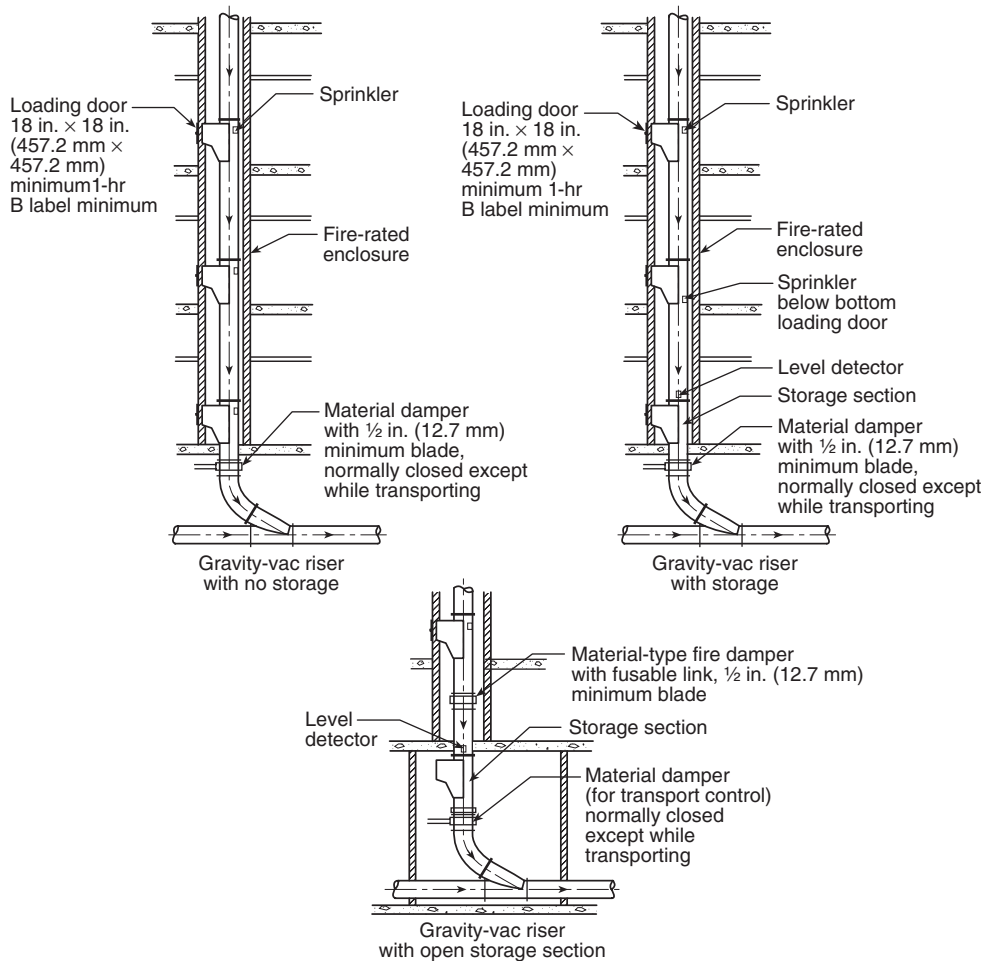


Figure 3-4.1 Gravity pneumatic system.

between the chute and the transport pipe, the interface and the discharge damper shall be within a room that is separated from other parts of the building by walls, partitions, floor, and ceiling assemblies having a minimum fire resistance rating not less than that specified for the chute. Openings to such rooms shall be protected by approved automatic-closing or self-closing 1½-hour fire doors suitable for Class B openings.

3-4.2.4 Automatic Sprinklers for Gravity Pneumatic Discharge Rooms. Automatic sprinklers shall be installed in chute terminal rooms.

3-4.3 Transport Piping.

3-4.3.1 Piping Size and Thickness. Transport piping shall have a minimum wall thickness of 16 U.S. gauge galvanized or stainless steel and shall be sized to fit the system's needs. Waste and linen transport systems shall be a minimum of 16 in. (406.4 mm) in diameter.

Exception: Where all materials entering the pneumatic-powered system are processed through a shredder, the transport pipe shall be permitted to be less than 16 in. (406 mm) in accordance with the authority having jurisdiction.

3-4.3.2 Penetrating Fire-Rated Walls. Automatic fire dampers shall be installed at all points where the waste or linen

transport system penetrates fire-resistive partitions or floor assemblies. The system shall shut down automatically upon closing of one of the fire dampers.

3-4.3.3 Exiting from Two-Hour Fire-Rated Shafts. Where the pneumatic transport pipe exits a 2-hour fire-rated shaft, the pipe wall thickness shall be increased to 11 U.S. gauge from within the shaft to 4 pipe diameters beyond the shaft wall. The 11-gauge pipe shall be supported at 3-ft (0.92-m) intervals.

3-4.4 Gravity Pneumatic Collector Discharge Area. The room or area where the collector discharges waste or linen shall be separated from the occupied part of the building by a 2-hour fire-rated wall. Where the room or area of collector discharge is within or abutting an occupied building, the room or area shall be protected by a sprinkler system. Sprinkler system installation shall comply with NFPA 13, *Standard for the Installation of Sprinkler Systems*.

Chapter 4 Other Waste Handling Systems

4-1 Definition. Waste handling systems and equipment, other than chute systems covered in Chapter 3, also shall comply with all of the basic requirements of this standard. Such systems and

equipment shall include, but are not limited to, waste cart transport systems, skip hoists, cranes and grapples, and various types of conveyors, such as belt conveyors, pan conveyors, screw conveyors, vibratory conveyors, and drag conveyors.

4-2 Waste Spillage Control. Waste handling systems and equipment shall be designed and constructed to prevent or minimize waste spillage so as to prevent potential fire problems.

4-3 Enclosure Requirements. The building, rooms, or enclosures in which waste handling systems and equipment are located and used for either interim storage of waste materials or the direct movement of waste from storage areas to processing equipment, such as incinerators, or both, shall be shut off from other areas of the building by walls, floor, and ceiling assemblies having a fire resistance rating of not less than 2 hours. Openings to such rooms shall be protected by approved automatic-closing or self-closing fire doors suitable for Class B openings.

4-4 Automatic Sprinklers. Automatic sprinklers shall be provided in rooms where waste handling systems and equipment are used to transport waste from interim storage areas to waste processing equipment, such as incinerators. In locations or rooms where waste handling systems and equipment are used for interim storage of waste only, the rooms shall be sprinklered in accordance with requirements specified in Chapter 6.

Chapter 5 Waste Compactors

5-1 General.

5-1.1 Definition. Waste compactors are devices using electro-mechanical-hydraulic means to reduce the volume of waste and to package it in the reduced condition.

5-1.2 Classification.

5-1.2.1 Commercial-industrial compactors shall be regulated by the provisions of this standard.

5-1.2.2 Commercial-industrial compactors used in multifamily or other classes of occupancies shall be permitted to be located indoors or outdoors. These compactors shall be permitted to be chute-fed or hand-fed. Discharge of the compactor shall be permitted to be into metal-compaction containers or disposable packages.

5-2 Commercial-Industrial Compactors.

5-2.1 All chute-fed compactors shall have an automatic special fine-water spray sprinkler with a minimum $1/2$ -in. (13-mm) orifice installed in the hopper of the compactor. This sprinkler shall be an ordinary temperature-rated sprinkler. The sprinklers shall be supplied by a minimum 1-in. (25.4-mm) ferrous piping or $3/4$ -in. (19-mm) copper tubing line from the domestic cold water supply.

The sprinkler shall provide a suitable spray into the hopper. A cycling (on-off), self-actuating, snap-action, heat-actuated sprinkler shall be permitted to be used, or the sprinkler shall be permitted to be controlled by a temperature sensor operating a solenoid valve. Sprinkler water piping shall be protected from freezing in outdoor installations.

5-2.2 Hand-fed compactors located within a building and not operated in conjunction with a chute shall not require installation of an automatic sprinkler in the hopper. Compactors larger than 2 yd³ (1.52 m³) shall be enclosed in a fire-rated room in conformance with 5-2.4.

5-2.3 Refuse compaction containers shall have an access door to the containers that can be opened without disconnecting the containers from the compactor or shall be provided with one $2 1/2$ -in. (63.5-mm) hose connection that fits standard fire-fighting equipment near the top of the container.

5-2.4 Chute terminal, compacting, or storage rooms shall be separated from other parts of the building by wall, partition, floor, and floor-ceiling assemblies having a fire resistance rating of not less than 2 hours. Openings to such rooms shall be protected by approved automatic-closing or self-closing fire doors suitable for Class B openings.

Chapter 6 Waste Storage Rooms

6-1 Application. Waste storage rooms in a building or structure shall comply with this chapter if they are used for storage or handling of waste with a combined total exceeding 1 yd³ (0.765 m³) uncompacted measure of waste.

6-2 Fire Separation. Waste storage rooms shall be separated from other parts of the building by walls and floor and ceiling assemblies having a fire resistance rating of not less than 2 hours. Openings to such rooms shall be protected by approved automatic-closing or self-closing fire doors suitable for Class B openings.

6-3 Automatic Sprinklers. Waste storage rooms shall be provided with automatic sprinklers installed in accordance with NFPA 13, *Standard for the Installation of Sprinkler Systems*.

Chapter 7 Other Waste Processing Equipment

7-1 Definition. Waste processing systems and equipment shall include those devices and processes used to change the physical form or characteristics of waste. In addition to compaction, as covered in Chapter 5, these shall include such devices as shredders, granulators, grinders, pulpers, and chippers.

7-2 Fire Separation. Rooms in which waste processing systems and equipment are located shall be separated from other parts of the building by walls, floor, and ceiling assemblies having a fire resistance rating of not less than 2 hours. Openings to such rooms shall be protected by automatic-closing or self-closing fire doors suitable for Class B openings.

7-3 Explosion Protection. Devices that granulate waste materials and that produce potentially explosive aerosols or combustible air mixtures shall be equipped with explosion protection devices or systems.

7-4 Automatic Sprinklers. Rooms in which waste processing equipment is located shall be installed with automatic sprinklers.

Sprinkler system installation shall be in accordance with NFPA 13, *Standard for the Installation of Sprinkler Systems*.

Chapter 8 Referenced Publications

8-1 The following documents or portions thereof are referenced within this standard as mandatory requirements and shall be considered part of the requirements of this standard. The edition indicated for each referenced mandatory document is the current edition as of the date of the NFPA issuance of this standard. Some of these mandatory documents might

also be referenced in this standard for specific informational purposes and, therefore, are also listed in Appendix B.

8-1.1 NFPA Publications. National Fire Protection Association, 1 Batterymarch Park, P.O. Box 9101, Quincy, MA 02269-9101.

NFPA 13, *Standard for the Installation of Sprinkler Systems*, 1996 edition.

NFPA 31, *Standard for the Installation of Oil-Burning Equipment*, 1997 edition.

NFPA 54, *National Fuel Gas Code*, 1996 edition.

NFPA 58, *Liquefied Petroleum Gas Code*, 1998 edition.

NFPA 70, *National Electrical Code*®, 1999 edition.

NFPA 90A, *Standard for the Installation of Air Conditioning and Ventilating Systems*, 1996 edition.

8-1.2 Other Publications.

8-1.2.1 ASTM Publications. American Society for Testing and Materials, 100 Barr Harbor Drive, West Conshohocken, PA 19428-2959.

ASTM C 27, *Standard Classification for Fireclay and High-Alumina Refractory Brick*, 1993.

ASTM C 199, *Standard Test Method for Pier Test for Refractory Mortars*, 1994.

ASTM E 136, *Standard Test Method for Behavior of Materials in a Vertical Tube Furnace at 750°C*, 1996.

Appendix A Explanatory Material

Appendix A is not a part of the requirements of this NFPA document but is included for informational purposes only. This appendix contains explanatory material, numbered to correspond with the applicable text paragraphs.

A-1-2 Other definitions relating to this standard are contained in NFPA 97, *Standard Glossary of Terms Relating to Chimneys, Vents, and Heat-Producing Appliances*.

A-1-2 Approved. The National Fire Protection Association does not approve, inspect, or certify any installations, procedures, equipment, or materials; nor does it approve or evaluate testing laboratories. In determining the acceptability of installations, procedures, equipment, or materials, the authority having jurisdiction may base acceptance on compliance with NFPA or other appropriate standards. In the absence of such standards, said authority may require evidence of proper installation, procedure, or use. The authority having jurisdiction may also refer to the listings or labeling practices of an organization that is concerned with product evaluations and is thus in a position to determine compliance with appropriate standards for the current production of listed items.

A-1-2 Authority Having Jurisdiction. The phrase “authority having jurisdiction” is used in NFPA documents in a broad manner, since jurisdictions and approval agencies vary, as do their responsibilities. Where public safety is primary, the authority having jurisdiction may be a federal, state, local, or other regional department or individual such as a fire chief; fire marshal; chief of a fire prevention bureau, labor department, or health department; building official; electrical inspector; or others having statutory authority. For insurance purposes, an insurance inspection department, rating bureau, or other insurance company representative may be the authority having jurisdiction. In many circumstances, the property owner or his or her designated agent assumes the role of the

authority having jurisdiction; at government installations, the commanding officer or departmental official may be the authority having jurisdiction.

A-1-2 Limited-Combustible. See NFPA 259, *Standard Test Method for Potential Heat of Building Materials*, and NFPA 220, *Standard on Types of Building Construction*.

A-1-2 Listed. The means for identifying listed equipment may vary for each organization concerned with product evaluation; some organizations do not recognize equipment as listed unless it is also labeled. The authority having jurisdiction should utilize the system employed by the listing organization to identify a listed product.

A-2-2.8 The changing composition of waste and regulations controlling temperatures and emissions have created very aggressive flue gases. Refractories that were suitable in the past can fail rapidly under existing conditions. There is no single material or family of materials suitable for ensuring fire safety under all conditions; therefore, no specific materials are identified in this appendix. Critical temperatures, aggressive chemical components, and conditions creating aggressive flue gases are identified. Selection of materials for chimney construction should be based on those capable of withstanding these conditions.

Condensed Flue Acid Corrosives. Hydrochloric acid is formed when chloride-bearing materials are oxidized. Hydrochloric acid is corrosive to all chimney linings and can destroy most metals in concentrations as low as 26 ppm in flue gases. Acid concentration in flue gases ranges from 26 ppm to as high as 2095 ppm.

The acid dew point is about 145°F (62.7°C).

Sulfuric acid is formed when sulfur is oxidized to SO₂, which is further oxidized to SO₃, which combines readily with water to form sulfuric acid, H₂SO₄. This flue acid is aggressive to most chimney linings.

The acid dew point depends on the SO₃ content of the flue gases. The maximum theoretical acid dew point is about 400°F (204.4°C). Acid concentration can be as high as 80 percent but will rapidly self-dilute to 35 percent.

Sulfurous acid is formed when SO₂ combines with water. It condenses as sulfurous acid, H₂SO₃, at the water dew points or about 130°F (54.4°C), but it is not as aggressive as sulfuric or hydrochloric acid and, therefore, does less damage.

Nitric acid is condensed in the water dew point area and also is not as aggressive to chimney materials as other flue acids. It pacifies the surface of stainless steel, reducing the corrosive effect of the other flue acids.

Miscellaneous Flue Acids. Other flue acids, formed by the halides, are very corrosive, but in lesser amounts than chlorides. Hydrochloric acid is, therefore, the controlling acid.

Other flue acids that condense at the water dew point are present; however, hydrochloric and sulfuric acids are the acids that cause the most corrosion in chimneys servicing incineration of general waste.

Alkali Corrosives. Alkalis are formed by the oxidation of metal oxides that are found in paints, ink, fillers, pigments, and so forth. The common alkalis are as follows:

- (a) Soda (Na₂O)
- (b) Potash (K₂O)
- (c) Lithia (Li₂O)

Increases in the quantities of plastics that are components of waste increase alkali in flue gases.