

NFPA

33



27

ANSI / NFPA 33

An American
National
Standard

December 2, 1981

SPRAY APPLICATION 1982



Copyright © 1982

All Rights Reserved

NATIONAL FIRE PROTECTION ASSOCIATION, INC.
Batterymarch Park, Quincy, MA 02269

2.5M-11-83-FP (4.5M)

Printed in U.S.A.

NOTICE

All questions or other communications relating to this document should be sent only to NFPA Headquarters, addressed to the attention of the Committee responsible for the document.

For information on obtaining Formal Interpretations of the document, proposing Tentative Interim Amendments, proposing amendments for Committee consideration, and appeals on matters relating to the content of the document, write to the Vice President and Chief Engineer, National Fire Protection Association, Batterymarch Park, Quincy, MA 02269.

A statement, written or oral, that is not processed in accordance with Section 16 of the Regulations Governing Committee Projects shall not be considered the official position of NFPA or any of its Committees and shall not be considered to be, nor be relied upon as, a Formal Interpretation.

Users of this document should consult applicable Federal, State and local laws and regulations. NFPA does not, by the publication of this document, intend to urge action which is not in compliance with applicable laws and this document may not be construed as doing so.

Policy Adopted by NFPA Board of Directors on December 3, 1982

The Board of Directors reaffirms that the National Fire Protection Association recognizes that the toxicity of the products of combustion is an important factor in the loss of life from fire. NFPA has dealt with that subject in its technical committee documents for many years.

There is a concern that the growing use of synthetic materials may produce more or additional toxic products of combustion in a fire environment. The Board has, therefore, asked all NFPA technical committees to review the documents for which they are responsible to be sure that the documents respond to this current concern. To assist the committees in meeting this request, the Board has appointed an advisory committee to provide specific guidance to the technical committees on questions relating to assessing the hazards of the products of combustion.

Licensing Provision — This document is copyrighted by the National Fire Protection Association (NFPA).

1. Adoption by Reference — Public authorities and others are urged to reference this document in laws, ordinances, regulations, administrative orders or similar instruments. Any deletions, additions and changes desired by the adopting authority must be noted separately. Those using this method are requested to notify the NFPA (Attention: Vice President and Chief Engineer) in writing of such use. The term "adoption by reference" means the citing of title and publishing information only.

2. Adoption by Transcription — A. Public authorities with lawmaking or rule-making powers only, upon written notice to the NFPA (Attention: Vice President and Chief Engineer), will be granted a royalty-free license to print and republish this document in whole or in part, with changes and additions, if any, noted separately, in laws, ordinances, regulations, administrative orders or similar instruments having the force of law, provided that: (1) due notice of NFPA's copyright is contained in each law and in each copy thereof; and, (2) that such printing and republication is limited to numbers sufficient to satisfy the jurisdiction's lawmaking or rulemaking process. B. Once this NFPA Code or Standard has been adopted into law, all printings of this document by public authorities with lawmaking or rulemaking powers or any other persons desiring to reproduce this document or its contents as adopted by the jurisdiction in whole or in part, in any form, upon written request to NFPA (Attention: Vice President and Chief Engineer), will be granted a nonexclusive license to print, republish, and vend this document in whole or in part, with changes and additions, if

Continued on inside back cover

© 1982 NFPA, All Rights Reserved

**Standard for
Spray Application Using Flammable
and Combustible Materials**

NFPA 33-1982

1982 Edition of NFPA 33

This edition of NFPA 33, *Standard for Spray Application Using Flammable and Combustible Materials*, was prepared by the Committee on Finishing Processes, and acted on by the National Fire Protection Association, Inc. on November 17, 1981, at its Fall Meeting in Toronto, Ontario, Canada. It was issued by the Standards Council on December 9, 1981, with an effective date of December 29, 1981, and supersedes all previous editions.

Changes other than editorial are indicated by a vertical rule in the margin of the page on which they appear. These lines are included as an aid to the user in identifying changes from the previous edition.

The 1982 edition of this standard has been approved by the American National Standards Institute.

Origin and Development of NFPA 33

The original NFPA Standard on Paint Spraying and Spray Booths was initiated in 1921. The first edition was published in 1922 as part of a Standard on Dip Tanks (now NFPA 34). Revised editions were published in 1926, 1928, 1935, 1937, 1941, 1946, 1950, 1953, 1954, 1955, 1957, 1959, 1960, 1961, 1966, 1969, 1973, and 1977.

Committee on Finishing Processes

Nicholas L. Talbot, Chairman
Improved Risk Mutuals

Paul H. Dobson, Secretary
Factory Mutual Research Corp.

F. D. Alroth, Underwriters Laboratories Inc.
Rep. NEC Code-Making Panel 14

E. B. Hoge, Eastern Air Lines Inc.

James B. Howard, NC Department of Labor - OSHA

John Jaresko, Industrial Risk Insurers

James R. Kolczynski, Noury Chemical Co.
Rep. SPI

Wallace D. Malmstedt, American Insurance Assn.

Gerald J. Rosicky, General Motors Corp.

Rep. NFPA Industrial Fire Protection Section

Don Scarbrough, Nordson Corp.

T. G. Shelton, Director of Fire Prevention
Rep. Fire Marshals Assn. of North America

William L. Smart, Ransburg Corp.

William H. White Jr., The Devilbiss Co.
Rep. Society of Manufacturing Engineers

Alternates

Albert A. Bartkus, Underwriters Laboratories Inc.

(Alternate to F. Alroth)

Gary M. Bell, The Devilbiss Co.

(Alternate to W. H. White Jr.)

M. A. Bridgham, Improved Risk Mutuals

(Alternate to N. L. Talbot)

J. P. Carroll, SPI

(Alternate to J. Kolczynski)

Salvatore A. Chines, Industrial Risk Insurers
(Alternate to J. Jaresko)

Kenneth O. Johnson, General Motors Corp.
(Alternate to G. J. Rosicky)

James L. Kennon, Nordson Corp.
(Alternate to D. R. Scarbrough)

Michael B. Moore, US Occupational Safety and Health Administration
(Alternate to T. P. Smith)

Nonvoting

Terence P. Smith, US Occupational Safety and Health Administration

This list represents the membership at the time the Committee was balloted on the text of this edition. Since that time, changes in the membership may have occurred.

NOTE: Membership on a Committee shall not in and of itself constitute an endorsement of the Association or any document developed by the Committee on which the member serves.

Contents

Foreword	33- 5
Chapter 1 Scope and Definitions	33- 5
Chapter 2 Location of Spray Application Operations	33- 9
Chapter 3 Spray Area	33-10
Chapter 4 Electrical and Other Sources of Ignition	33-12
Chapter 5 Ventilation	33-18
Chapter 6 Flammable and Combustible Liquids Storage and Handling	33-22
Chapter 7 Protection	33-25
Chapter 8 Operations and Maintenance	33-27
Chapter 9 Fixed Electrostatic Apparatus	33-29
Chapter 10 Electrostatic Hand Spraying Equipment	33-31
Chapter 11 Drying, Curing or Fusion Apparatus	33-33
Chapter 12 Automobile Undercoating in Garages	33-35
Chapter 13 Powder Coating	33-36
Chapter 14 Organic Peroxides and Plural Component Coatings	33-40
Chapter 15 Training	33-42
Appendix A	33-43
Appendix B	33-63
Appendix C	33-65

Standard for Spray Application Using Flammable and Combustible Materials

NFPA 33-1982

Foreword

NOTICE: An asterisk (*) following the number or letter designating a paragraph indicates explanatory material on that paragraph in Appendix A.

The safety of life and property from fire or explosion in the spray application of flammable and combustible paints, coatings and finishes depends upon the extent, arrangement, maintenance and operation of the process.

An analysis of actual experience in industry demonstrates that largest fire losses and fire frequency have occurred where good practice standards were not observed.

Chapter 1 Scope and Definitions

1-1* Scope.

1-1.1 This standard covers the application of flammable or combustible materials when applied as a spray by compressed air, "airless" or "hydraulic atomization," or by steam, or electrostatic methods or by any other means in continuous or intermittent processes. It also covers the application of combustible powders when applied by powder spray guns, electrostatic powder spray guns, fluidized beds or electrostatic fluidized beds.

1-1.2 This standard outlines practical requirements to obtain reasonable safety under average contemplated conditions. Where unusual industrial processes are involved, the authority having jurisdiction may for substantiated cause require additional safeguards or modify the requirements of this standard provided equivalent safety is thereby obtained.

1-1.3* This standard does not cover outdoor spray application of buildings, tanks or other similar structures, nor small portable spraying apparatus not used repeatedly in the same location; however, the herein described fundamental safeguards pertaining to cleanliness, care of flammable liquids, dangerous vapor-air or powder-air mixtures and sources of ignition should be followed where applicable.

1-1.4* This standard does not cover the spray application of non-combustible finishing material. Certain water type finishes, however, although involving little or no hazard in the liquid state may leave highly combustible residues upon evaporation of the liquid carrier. The provisions of this standard for minimizing the hazards of combustible residues shall be followed irrespective of the characteristics of the liquid.

1-2 Definitions.

Aerated Solid Powders. Any powdered material used as a coating material which shall be fluidized within a container by passing air uniformly from below. It is common practice to fluidize such materials to form a fluidized powder bed and then dip the part to be coated into the bed in a manner similar to that used in liquid dipping. Such beds are also used as sources for powder spray operations. The combustibility of such materials may be determined by reference to Appendix A-13-5 and to the NFPA 654, *Standard for the Prevention of Dust Explosions in the Plastics Industry*.

Approved. Acceptable to the "authority having jurisdiction."

NOTE: The National Fire Protection Association does not approve, inspect or certify any installations, procedures, equipment, or materials nor does it approve or evaluate testing laboratories. In determining the acceptability of installations or procedures, equipment or materials, the authority having jurisdiction may base acceptance on compliance with NFPA or other appropriate standards. In the absence of such standards, said authority may require evidence of proper installation, procedure or use. The authority having jurisdiction may also refer to the listings or labeling practices of an organization concerned with product evaluations which is in a position to determine compliance with appropriate standards for the current production of listed items.

Authority Having Jurisdiction. The "authority having jurisdiction" is the organization, office or individual responsible for "approving" equipment, an installation or a procedure.

NOTE: The phrase "authority having jurisdiction" is used in NFPA documents in a broad manner since jurisdictions and "approval" agencies vary as do their responsibilities. Where public safety is primary, the "authority having jurisdiction" may be a federal, state, local or other regional department or individual such as a fire chief, fire marshal, chief of a fire prevention bureau, labor department, health department, building official, electrical inspector, or

others having statutory authority. For insurance purposes, an insurance inspection department, rating bureau, or other insurance company representative may be the "authority having jurisdiction." In many circumstances the property owner or his designated agent assumes the role of the "authority having jurisdiction"; at government installations, the commanding officer or departmental official may be the "authority having jurisdiction."

Dry Spray Booth. A spray booth not equipped with a water washing system. A dry spray booth may be equipped with (1) distribution or baffle plates to promote an even flow of air through the booth or cause deposit of overspray before it enters exhaust duct; or (2) overspray dry filters to minimize dusts or residues entering exhaust ducts; or (3) overspray dry filter rolls designed to minimize dusts or residues entering exhaust ducts; or (4) where dry powders are being sprayed, with powder collection systems so arranged in the exhaust to capture oversprayed material.

Electrostatic Fluidized Bed. A container holding powder coating material which is aerated from below so as to form an air-supported expanded cloud of such material which is electrically charged with a charge opposite to the charge of the object to be coated; such object is transported through the container immediately above the charged and aerated materials in order to be coated.

Fluidized Bed. A container holding powder coating material which is aerated from below so as to form an air-supported expanded cloud of such material through which the preheated object to be coated is immersed and transported.

Labeled. Equipment or materials to which has been attached a label, symbol or other identifying mark of an organization acceptable to the "authority having jurisdiction" and concerned with product evaluation, that maintains periodic inspection of production of labeled equipment or materials and by whose labeling the manufacturer indicates compliance with appropriate standards or performance in a specified manner.

Listed. Equipment or materials included in a list published by an organization acceptable to the "authority having jurisdiction" and concerned with product evaluation, that maintains periodic inspection of production of listed equipment or materials and whose listing states either that the equipment or material meets appropriate standards or has been tested and found suitable for use in a specified manner.

NOTE: The means for identifying listed equipment may vary for each organization concerned with product evaluation, some of which do not recognize equipment as listed unless it is also labeled. The "authority having jurisdiction" should utilize the system employed by the listing organization to identify a listed product.

Liquids.

Flammable. Any liquid having a flash point below 100°F (37.8°C) closed cup and having a vapor pressure not exceeding 40 lb per sq in. absolute (2068.6 mm) at 100°F (37.8°C).

Combustible. Any liquid having a flash point at or above 100°F (37.8°C). For further classification see NFPA 321, *Basic Classification of Flammable and Combustible Liquids*.

Spray Area.* Any area in which dangerous quantities of flammable or combustible vapors, mists, residues, dusts or deposits are present due to the operation of spray processes.

A spray area shall include:

(a) The interior of spray booths and rooms except as specifically provided in Section 11-4.

(b) The interior of ducts exhausting from spraying processes.

(c) Any area in the direct path of spraying operations.

The authority having jurisdiction may, for the purpose of this standard, define the limits of the spray area in any specific case. The "spray area" in the vicinity of spraying operations will necessarily vary with the design and arrangement of equipment and method of operation. When spraying operations are strictly confined to predetermined spaces which are provided with adequate and reliable ventilation, such as a properly constructed spray booth, the "spray area" will ordinarily not extend beyond the booth enclosure. When, however, spraying operations are not confined to adequately ventilated spaces the "spray area" may extend throughout the entire room containing spraying operations.

Spray Booth. A power-ventilated structure provided to enclose or accommodate a spraying operation, to confine and limit the escape of spray, vapor and residue, and to safely conduct or direct them to an exhaust system. Spray booths are manufactured in a variety of forms, including automotive refinishing, downdraft, open-face, traveling, tunnel, and updraft booths.

Spray Room. A power-ventilated fully enclosed room used exclusively for open spraying of flammable or combustible materials. The entire spray room is a spray area. A spray booth is not a spray room.

Waterwash Spray Booth. A spray booth equipped with a water washing system designed to minimize dusts or residues entering exhaust ducts and to permit the recovery of overspray finishing material.

Chapter 2* Location of Spray Application Operations

2-1 Spray application operations within the scope of this standard shall be confined to properly designed and constructed spray booths, spray rooms, or properly designated spray areas as defined.

2-2 Spray application operations shall not be conducted in a building classified as assembly, educational, institutional or residential, except in a room designed for the purpose, protected with an approved system of automatic sprinklers and separated vertically and horizontally from such occupancies by construction having not less than a two-hour fire resistance rating.

Chapter 3* Spray Area

3-1 Walls and ceilings which enclose or intersect spray areas shall be substantially constructed of steel, concrete, masonry, or other noncombustible materials and shall be securely and rigidly supported.

The interior surfaces of spray areas shall be smooth and designed to prevent pocketing of residues and to facilitate ventilation, cleaning, and washing.

The floor construction of spray areas, if combustible, shall be covered by noncombustible material. (*See Section 8-3 for disposable coverings.*)

3-1.1 Steel shall not be thinner than No. 18 MSG (1.3 mm).

3-1.2 Aluminum or other substantial noncombustible material may be used for intermittent or low volume spraying, subject to the approval of the authority having jurisdiction.

3-1.3 Spray booths used exclusively for powder application may be constructed of other fire retardant materials when approved by the authority having jurisdiction.

3-1.4 Spray rooms shall have at least a one-hour fire resistance rating.

3-2 Where conveyor openings are arranged to carry work into or out of spray areas the opening shall be as small as practical.

3-3 Spray booths shall be separated from other operations by not less than 3 ft (1 m), or by a partition or wall having a one-hour fire resistance rating.

Spray booths shall be installed so that all portions are readily accessible for cleaning. A clear space of not less than 3 ft (1 m) on all sides shall be kept free from storage or combustible construction. This does not preclude the installation of a spray booth against a partition or wall having a one-hour fire resistance rating providing the booth can be maintained and cleaned.

3-4 Where the product to be sprayed is brought into a spray area, removed from it, or manipulated while there by a self-powered vehicle capable of producing ignition, the vehicle shall not be activated in the area unless the spray operation is stopped, the ventilation system is in operation and the area has been adequately ventilated to ensure a safe atmosphere.

3-5 When spray areas are illuminated through glass panels or other noncombustible transparent materials, fixed lighting units shall be used as a source of illumination. Panels shall effectively isolate the spray area from the area in which the lighting unit is located, and shall be of noncombustible materials of such a nature or so protected that breakage will be unlikely. Panels shall be so arranged that normal accumulations of residue on the exposed surface of the panel will not be raised to a dangerous temperature by the lighting unit. Panels shall be so installed that they may be easily cleaned.

3-6 Spray areas equipped with distribution or baffle plates, or dry-type overspray collection filters shall conform to the following:

3-6.1 Distribution or baffle plates shall be of noncombustible material and readily removable or accessible on both sides for cleaning.

3-6.2 Filters shall not be used when applying a spray material known to be highly susceptible to spontaneous heating and ignition.

3-6.3 Supports and holders for filters shall be noncombustible.

3-6.4 Clean filters shall be of a listed type.

3-6.5 Filters shall not alternately be used for different types of coating materials, where the combination of materials may result in spontaneous ignition. (*See also Section 8-9.*)

Chapter 4* Electrical and Other Sources of Ignition

4-1* All electrical equipment, open flames and other sources of ignition, except finishing operations as described in Section 3-6, shall conform to the requirements of Chapter 4 and:

(a) Electrostatic apparatus shall conform to the requirements of Chapters 9 and 10;

(b) Drying, curing and fusion apparatus shall conform to the requirements of Chapter 11;

(c) Automobile undercoating spray operations in garages shall conform to the requirements of Chapter 12.

(d) Powder coating equipment shall conform to the requirements of Chapter 13.

4-2* There shall be no open flame, spark-producing equipment or exposed surfaces exceeding the ignition temperature of the material being sprayed in the areas specified in (a) and (b) below, except as specifically permitted in Sections 4-7, 5-5, and 11-3 and in NFPA 86A, *Standard for Ovens and Furnaces*. Further, there shall be no equipment or processes that may produce sparks or particles of hot metal located above or adjacent to the areas in (a) and (b) below, unless means are provided to prevent the sparks or particles of hot metal from entering these areas:

(a) A spray area as herein defined.

(b) An area adjacent to a spray area and defined in Section 4-7 as requiring electrical equipment conforming to the provisions of NFPA 70, *National Electrical Code*®, for Division 2 locations, unless separated therefrom by a partition extending at least to the boundary of the Division 2 location.

4-3 Space heating appliances, steam pipes or hot surfaces shall not be located in a spray area where deposits or combustible residues may readily accumulate and be ignited.

4-4 Electrical wiring and equipment shall conform to the provisions of this section and shall otherwise be in accordance with NFPA 70, *National Electrical Code*.

4-5* Unless specifically listed for locations containing deposits of dangerous quantities of flammable or combustible vapors, mists, residues, dusts or deposits (as applicable), there shall be no electrical equipment in any spray area as herein defined whereon deposits of combustible residue may readily accumulate, except wiring in rigid metal conduit, Type MI cable, or in metal boxes or fittings containing no taps, splices or terminal connections.

4-6* Electrical wiring and equipment not subject to deposits of combustible residues but located in a spray area as herein defined shall be of explosionproof or other type approved for Class I and Class II, Division 1 locations, and shall otherwise conform to the provisions of NFPA 70, *National Electrical Code*, for Class I or Class II, Division 1 locations. (See Articles 500, 501, 502, and 516 of the Code.)

4-7* Electrical wiring and equipment located adjacent to a spray area, as herein defined, shall conform to one of the following: 4-7.1 — 4-7.4.

4-7.1 Equipment outside of, but within 20 ft (6 m) horizontally and 10 ft (3 m) vertically, of any spray area, and not separated from it by partitions extending at least to the boundary of the Division 2 location shall not produce sparks under normal operating conditions, and shall otherwise conform to the provisions of NFPA 70, *National Electrical Code*, for Class I or Class II, Division 2 locations (as applicable). (See Articles 500, 501, 502, and 516 of the Code.) (Also see Figure 1.)

4-7.2 If spraying operations are conducted within a closed top, open face or front booth or room, the electrical wiring and equipment outside of the booth or room, but within the space shown in Figures 2A and 2B, shall not produce sparks under normal operating conditions, and shall otherwise conform to the provisions of NFPA 70, *National Electrical Code*, for Class I or Class II, Division 2 locations (as applicable). (See Articles 500, 501, 502, and 516 of the Code.) The space within 3 ft (1 m) in all directions from openings other than the open face or front shall be considered as Class I, Division 2 or Class II, Division 2 locations.

The Class I and Class II, Division 2 locations shown in Figure 2 shall extend from the open face or open front of the spray booth or room in accordance with the following:

(a) If the ventilation system is interlocked with the spraying equipment so as to make the spraying equipment inoperable when the ventilating system is not in operation, the space shall extend 5 ft (1.5 m)

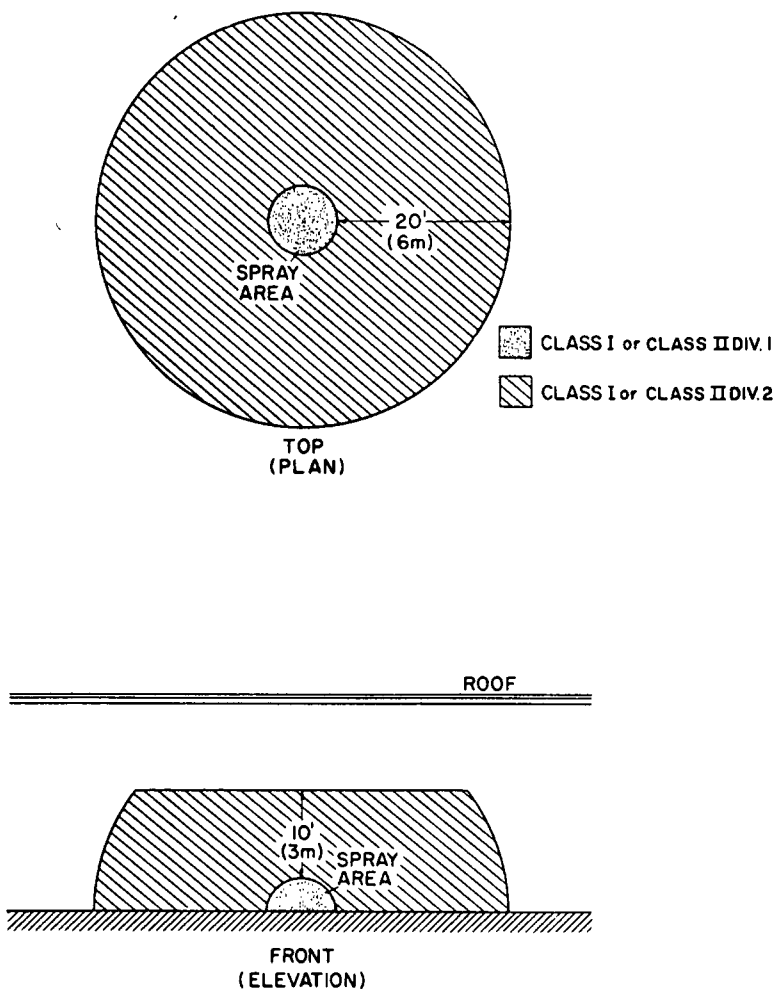


Figure 1. Class I or Class II, Division 2 locations adjacent to an unenclosed spray operation.

4-7.3 If spraying operations are conducted within an open top booth the space 3 ft (1 m) vertically above the booth shall be a Class I or Class II, Division 2 location. The space within 3 ft (1 m) in all directions from openings other than the open top shall also be considered as a Class I or Class II, Division 2 location. Electrical wiring and equipment in these areas shall not produce sparks under normal operating conditions, and shall otherwise conform to the provisions of NFPA 70, *National Electrical Code*, for Class I or Class II, Division 2 locations. (See Articles 500, 501, 502, and 516 of the Code.)

4-7.4 If spraying operations are confined to an enclosed spray booth or room, the space adjacent to the booth or room shall be considered nonhazardous due to the spraying operation, except for the space within 3 ft (1 m) in all directions from any openings in the booth or room, as shown in Figure 3. Electrical wiring and equipment within the space within 3 ft (1 m) in all directions from any opening shall not produce sparks under normal operating conditions, and shall otherwise conform to the provisions of NFPA 70, *National Electrical Code*, for Class I or Class II, Division 2 locations (as applicable). (See Articles 500, 501, 502, and 516 of the Code.)

4-8* Electric lamps outside of, but within 20 ft (6 m) of any spray area as herein defined, and not separated therefrom by a partition, shall be totally enclosed to prevent the falling of hot particles and shall be protected from mechanical injury by suitable guards or by location.

4-9* Portable electric lamps shall not be used in any spray area during spraying operations.

Exception: Where portable electric lamps are required for operations in spaces not readily illuminated by fixed lighting within the spray area, they shall be of the type approved for Class I or Class II, Division 1 locations where readily ignitable residues may be present.

4-9.1* All metal parts of spray booths, exhaust ducts and piping systems conveying flammable or combustible liquids or aerated combustible solids shall be properly electrically grounded in an effective and permanent manner.

4-9.2* Unless specifically intended to be operated at other than ground potential, airless high fluid pressure spray guns and any conductive object being sprayed shall be properly electrically grounded.

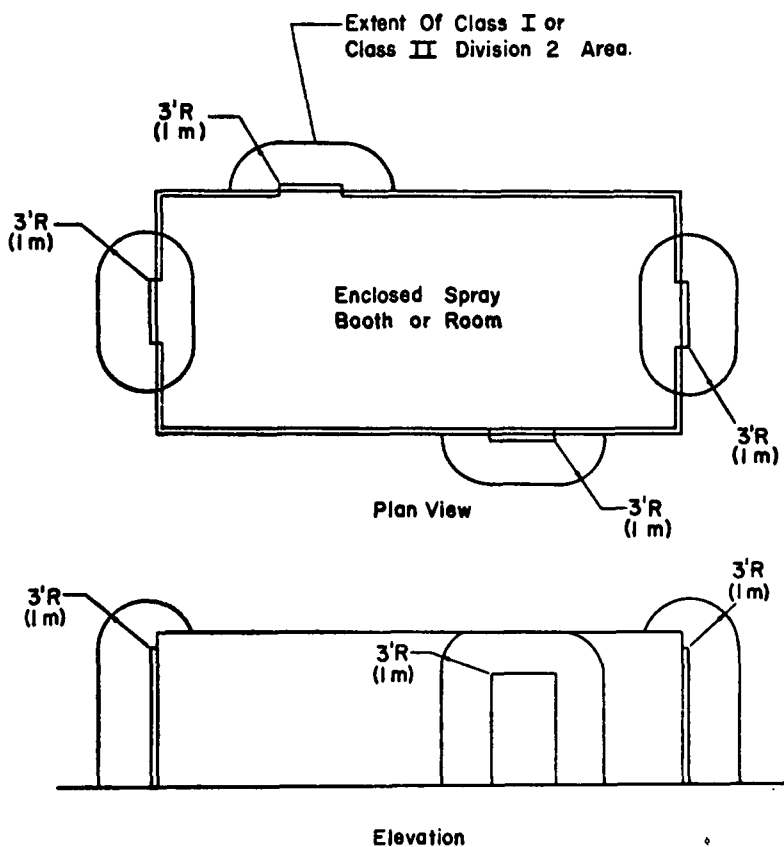


Figure 3. Class I or Class II, Division 2 locations adjacent to openings in an enclosed spray booth or room.

Chapter 5* Ventilation

5-1 Ventilating and exhaust systems shall be in accordance with NFPA 91, *Standard for Blower and Exhaust Systems for Vapor Removal*, where applicable and shall also conform to provisions of this section.

5-2 All spray areas shall be provided with mechanical ventilation adequate to remove flammable or combustible vapors, mists, residues, dusts or deposits to a safe location and to confine and control combustible residues so that life or property is not endangered.

5-2.1* Liquid Coating Systems.

(a)* Generally, ventilation for nonelectrostatic spray operations shall provide an average velocity of not less than 100 ft per minute (30.5 m/min) and for electrostatic spray operations shall provide an average velocity of not less than 60 ft per minute (18.3 m/min) over the open face of the booth or the booth cross-section during spraying operations. With the approval of the authority having jurisdiction these rates may be reduced, but in all cases the exhaust stream must be maintained below 25 percent of the LFL.

(b)* **Spray Rooms and Open Spray Areas.** Ventilation for spray rooms and open spray areas shall be adequate to maintain the exhaust stream below 25 percent of the LFL.

5-2.2 Spray areas equipped with overspray collection filters shall have visible gages, audible alarms or an effective inspection program that indicates that the required air velocity is maintained.

5-2.3 Powder Coating Systems. (See Section 13-5.)

5-3 Mechanical ventilation shall be kept in operation at all times while spraying operations are being conducted and for a sufficient time thereafter to allow flammable vapors from drying coated articles and drying finishing material residue to be exhausted.

When spray is automatically applied without an attendant constantly on duty, the operating control of spray apparatus shall be so arranged that spray cannot be applied unless exhaust fans are in operation.

5-4* An adequate supply of makeup air to compensate for air exhausted from a spraying operation shall be safely provided to that operation. Makeup air shall be so introduced to an operation as to provide for the efficient operation of exhaust fans and minimize the creation of dead air pockets.

5-5 Equipment to process air exhausted from spray operation for removal of contaminants shall be approved by the authority having jurisdiction.

5-6 Air exhausted from spray operations shall not be directed so that it will contaminate makeup air being introduced into the spray area or other ventilating intakes, nor directed so as to create a nuisance.

5-6.1 Air exhausted from a spray operation shall not be recirculated to be used as makeup air for occupied spaces unless the exhaust air has been decontaminated to return it to a safe acceptable composition and unless listed equipment monitors the decontaminated exhaust air stream to signal the operator and to automatically shut down the spray operation in event of failure of the decontaminating equipment to maintain acceptable air quality standards.

5-6.2 Air exhausted from a spray operation shall not be recirculated to be used as makeup air for an unmanned subsequent spray operation, unless the solid particulate has been safely removed from the exhaust air and unless installed listed equipment monitors the composition of the air exhausted from the second operation to signal the operator and to automatically shut down both spray operations in the event that the composition of the air exhausted from the second operation exceeds 25 percent of the LFL of the used solvents.

5-7 Individual spray booths shall be separately ducted to the building exterior, except for multiple cabinet spray booths with combined frontal areas of not more than 18 sq ft (1.7 m²) using coating materials not likely to react and cause ignition of the residue, or where permitted in Chapter 13 or in Section 5-8.

5-8* Where treatment of exhaust is necessary for air pollution or for energy conservation, ducts may be manifolded if the sprayed materials used are not likely to react and cause ignition of the residue in the duct and if:

- (a) No nitrocellulose base finishing material is used.

(b) An air cleaning system reduces the amount of overspray carried into the manifolded duct (a booth filter system is adequate).

(c) Automatic sprinkler protection is provided at the junction of each booth exhaust with the manifold in addition to protection recommended in Chapter 7.

(d) The installation is approved by the authority having jurisdiction.

5-9 Exhaust ducts shall be constructed of steel and shall be substantially supported. If dampers are installed, they shall be maintained so that adequate airflow is maintained at all times the ventilating system is in operation. When spray booths are not in use and it is necessary to shut off ducts, noncombustible removable covers completely closing ducts may be used.

5-10 Exhaust ducts shall be protected against mechanical damage and have a clearance from unprotected combustible construction or other combustible material of not less than 18 in. (46 cm), except if combustible construction is provided with the following protection applied to all surfaces within 18 in. (46 cm), clearances may be reduced to the distance indicated:

- (1) 28 gage (0.4 mm) sheet metal on ¼-in. (6.4-mm) asbestos mill board 12 in. (30 cm)
- (2) 28 gage (0.4 mm) sheet metal on ⅝-in. (3.2-mm) asbestos mill board spaced out 1 in. (2.5 cm) on noncombustible spacers 9 in. (23 cm)
- (3) 22 gage (0.8 mm) sheet metal on 1-in. (2.5-cm) rockwool bats reinforced with wire mesh or the equivalent 3 in. (7.6 cm)
- (4) Where ducts are protected internally with an approved automatic sprinkler system, properly maintained, the clearance may be reduced to 6 in. (15 cm).

5-11 The exhaust duct discharge point shall be not less than 6 ft (1.8 m) from any combustible exterior wall or roof nor shall the exhaust duct discharge in the direction of any combustible construction or unprotected opening in any noncombustible exterior wall within 25 ft (7.6 m).

5-12 Exhaust ducts shall be provided with ample access doors to facilitate cleaning.

5-13 The exhaust fan rotating element shall be nonferrous or the fan shall be constructed so that a shift of the wheel or shaft will not permit two ferrous parts of the fan to rub or strike. There shall be ample clearance between fan rotating element and fan casing to avoid a fire by friction, necessary allowance being made for ordinary expansion and loading to prevent contact between moving parts and the duct or fan housing. Fan blades shall be mounted on a shaft sufficiently heavy to maintain proper alignment even when the blades of the fan are heavily loaded, the shaft preferably to have bearings outside the duct and booth. All bearings shall be of the self-lubricating type, or lubricated from an outside duct.

5-14 Electrical motors driving exhaust fans shall not be placed inside any spray area unless they meet the provisions of Section 4-5.

5-15 Belts shall not enter any spray area unless the belt and pulley within the spray area is completely enclosed.

5-16* Freshly sprayed articles shall be dried only in spaces provided with adequate ventilation to prevent the accumulation of flammable vapors. In the event adequate and reliable ventilation is not provided such drying spaces shall be considered a spray area as herein defined. (*See also Chapter 11.*)

Chapter 6 Flammable and Combustible Liquids Storage and Handling

6-1 The storage of flammable or combustible liquids in connection with spraying operations shall conform to the requirements of NFPA 30, *Flammable and Combustible Liquids Code*, where applicable.

6-1.1 Bulk storage of flammable or combustible liquids shall be in a separate, properly constructed building detached from other important buildings or cut off from them by construction having at least one-hour fire resistance rating. Lesser quantities of flammable or combustible liquids may be stored for use within a building under conditions meeting the other provisions of this chapter.

6-1.2 The storage of flammable and combustible liquids in containers and portable tanks inside buildings shall meet the requirements of NFPA 30, *Flammable and Combustible Liquids Code*.

6-1.3 The design, construction, and installation of storage tanks for flammable and combustible liquids shall comply with NFPA 30, *Flammable and Combustible Liquids Code*, requirements for "Tank Storage."

6-1.4 The design and construction of wood or metal storage cabinets shall meet the requirements of NFPA 30, *Flammable and Combustible Liquids Code*, and any one such cabinet shall contain not more than 60 gal (225 L) of Class I and Class II liquids, or 120 gal (450 L) of Class III liquids. When approved by the authority having jurisdiction, more than one such cabinet may be located in a single fire area.

6-1.5 The quantity of flammable and combustible liquids kept in the vicinity of spraying operations outside an inside storage room or storage cabinet in any one fire area shall not exceed the greater of: (1) a supply for one day or one shift; (2) 25 gal (95 L) of Class IA liquids in containers, and 120 gal (450 L) of Class IB, IC, II or III liquids in containers; or (3) one approved portable tank not exceeding 660 gal (2500 L) of Class IB, IC, II, or III liquids.

6-2 Closed containers, approved portable tanks, approved safety cans, or a properly arranged system of piping shall be used for transporting flammable or combustible liquids. Open or glass containers shall not be used for transportation or storage.

6-3 The withdrawal of flammable or combustible liquids from containers and the filling of containers, including portable mixing tanks, shall be done only in a suitable mixing room or in a spray area when the ventilating system is in operation. Adequate precautions shall be taken to protect against liquid spillage and sources of ignition.

6-4 Except as provided in Section 6-6, the withdrawal of flammable or combustible liquids from containers having a capacity of greater than 60 gal (225 L) shall be by approved pumps.

6-5 Containers supplying spray nozzles shall be of closed type or provided with metal covers kept closed. Containers not resting on floors shall be on substantial supports or suspended by wire cables. Containers supplying spray nozzles by gravity flow shall not exceed 10 gal (38 L) capacity.

6-6 Original shipping containers shall not be subjected to air pressure for supplying spray nozzles. Pressure vessels supplying spray nozzles shall be of limited capacity, not exceeding that necessary for one day's operation; shall be designed and approved for such use; shall be provided with a visible pressure gage; and shall be provided with a relief valve; all in conformance with the *ASME Code for Unfired Pressure Vessels*.

6-7 Containers under pressure supplying spray nozzles, air storage tanks and coolers shall conform to the standards of the *ASME Code for Unfired Pressure Vessels* for construction, tests and maintenance.

6-7.1 All containers or piping to which is attached a hose or flexible connection shall be provided with a shutoff valve at the connection. Such valves shall be kept shut when spraying operations are not being conducted, except when a circulating system is used and it is provided with an automatically operated anti-runaway control.

6-7.2 When a pump is used to deliver products, automatic means shall be provided to prevent pressure in excess of the design working pressure of accessories, piping and hose.

6-7.3 All pressure hose and couplings shall be inspected at regular intervals appropriate to the service. With the hose extended, the hose

and couplings shall be tested using the "in service maximum operating pressures." Any hose showing material deteriorations, signs of leakage or weakness in its carcass or at the couplings shall be withdrawn from service and discarded.

6-8 If a spray liquid heater is used, it shall be low-pressure, steam or hot water type, or electric. If electric, it shall be approved and listed for the specific location in which it is used. (*See Chapter 4.*) Heaters shall not be located in spray booths nor other locations subject to the accumulation of deposits or combustible residue. Agitators, if used, shall be driven by compressed air, water, or low-pressure steam, or electricity. If powered by an electric motor, the motor shall conform to the requirements of Chapter 4.

6-8.1 Unless flammable and combustible liquid piping, hose and equipment have been designed to meet the requirements of high pressure processes — those employing pressures in excess of 100 psig (7.9 bars) — such equipment shall not be used for this purpose.

6-8.2 If flammable or combustible liquids are supplied to spray nozzles by positive displacement pumps, means shall be provided to prevent the discharge pressure exceeding the safe operating pressure of the system. Any discharge shall be to a safe location.

6-9 Whenever flammable or combustible liquids are transferred from one container to another, both containers shall be effectively bonded and grounded to dissipate static electricity. NFPA 77, *Recommended Practice on Static Electricity*, provides information on static protection.

6-10 Piping systems conveying flammable or combustible liquids shall be of steel or other material having comparable properties of resistance to heat and physical damage; they shall be so installed that a rupture of the system for any reason is unlikely. Piping systems shall be properly bonded and grounded.

Chapter 7* Protection

7-1 Spray areas shall be protected with an approved automatic fire extinguishing system.

7-2* In sprinklered buildings, the automatic sprinkler system in rooms containing spray application operations shall conform to NFPA 13, *Standard for the Installation of Sprinkler Systems*, provisions for Extra Hazard Occupancy, and in unsprinklered buildings where sprinklers are installed only to protect spray areas, the installation shall conform to such standards insofar as they may be applicable. Sprinkler installations shall also conform to the provisions of this chapter.

NOTE: Sprinklers in rooms containing spray application operations should be on a wet pipe system where practical. Unusual or out-of-the-ordinary spray operations may require open head deluge or a combination of open and closed head automatic sprinkler protection, subject to the approval of the authority having jurisdiction.

7-3 Water supply for sprinklers in rooms containing spray finishing operations shall be sufficient to supply all sprinklers likely to open in one fire without depleting the available water for use in hose streams. Where sprinklers are installed to protect spray areas only, water may be furnished from the domestic supply, subject to the approval of the authority having jurisdiction.

7-4* Where automatic sprinklers protect each spray booth (together with its connecting exhaust) they shall be under an accessibly located separate OS & Y subcontrol valve. Sprinkler systems in stacks or ducts shall be automatic and of a type not subject to freezing.

7-5 Sprinklers protecting spray areas shall be cleaned and protected against overspray residue so that they will operate quickly in event of fire. If covered, polyethylene or cellophane bags having a thickness of 0.003 in. (0.076 mm) or less, or thin paper bags shall be used. Coverings shall be replaced or heads cleaned frequently so that heavy deposits of residue do not accumulate.

7-6 Where automatic sprinkler protection is not available, a spray booth and its exhaust ducts may be protected with a dry chemical extinguishing system installed so as to conform to NFPA 17, *Standard for Dry Chemical Extinguishing Systems*; a carbon dioxide system installed so as to conform to NFPA 12, *Standard for Carbon Dioxide Extinguishing Systems*; or a halogenated extinguishing system installed so as to conform to NFPA 12A, *Standard on Halon 1301 Fire Extinguishing Systems* or NFPA 12B, *Standard on Halon 1211 Fire Extinguishing Systems*.

7-7 An adequate supply of suitable portable fire extinguishers shall be installed near all spray areas. (See NFPA 10, *Standard on Portable Fire Extinguishers*.)

7-8* Fixed powder application equipment shall be protected further by installation of approved flame detection apparatus that will, in event of ignition, react to the presence of flame within one-half second and:

(a) Shut down all energy supplies (electrical and compressed air) to conveyor, ventilation, application, transfer and powder collection equipment.

(b) Close segregation dampers in associated ductwork to interrupt airflows from application equipment to powder collectors.

(c) Actuate an alarm.

Chapter 8* Operations and Maintenance

8-1* Spraying shall not be conducted outside of predetermined spray areas and all provisions of this standard applying to spray areas shall be strictly followed.

8-2 High pressure hose conveying flammable or combustible material in "airless" spray application operations shall be frequently inspected and properly maintained. Hose and equipment shall be so located that in the event of a leak or rupture, application material will not be discharged into any space having a source of ignition.

8-3* All spray areas shall be kept free from the accumulation of deposits of combustible residues. Combustible coverings (thin paper, plastic, etc.) and strippable coatings may be used to facilitate cleaning operations in spray areas. If residue accumulates to excess in booths, duct or duct discharge points or other spray areas, then all spraying operations shall be discontinued until conditions are corrected.

8-4 Maintenance procedures shall be established to ensure replacing overspray collector filters before excessive restriction to air flow occurs. Overspray collectors shall be inspected after each period of use and clogged filters discarded and replaced.

8-5* Residue scrapings and debris contaminated with residue shall be immediately removed from premises and properly disposed of.

8-6* Approved metal waste cans shall be provided wherever rags or waste are impregnated with sprayed material and all such rags or waste deposited therein immediately after use. The contents of waste cans shall be properly disposed of at least once daily at the end of each shift.

8-7 Employees' clothing contaminated with sprayed material shall not be left on the premises overnight unless kept in metal lockers.

All discarded overspray collector filters shall be immediately removed to a safe, well-detached location or placed in a water filled metal container and disposed of at the close of the day's operation unless maintained completely in water.

8-8 Solvents for cleaning operations shall have flash points above 100°F (37.8°C). However, for cleaning spray nozzles and auxiliary equipment, solvents having flash points not less than those normally used in spray operations may be used.

Cleaning operations using flammable or combustible solvents shall be conducted inside spray booths with ventilating equipment operated during cleaning, or in other adequately ventilated locations complying with the requirements of Chapter 4.

8-9* Spray booths shall not be alternately used for different types of coating materials, where the combination of the materials may be conducive to spontaneous ignition, unless all deposits of the first used material are removed from the booth and exhaust ducts prior to spraying with the second. Examples of dangerous combinations are:

(a) Deposits of lacquers containing nitrocellulose combined with finishes containing drying oils, such as varnishes, oil-based stains, air-drying enamels, and primers.

(b) Bleaching compounds based on hydrogen peroxide, hypochlorites, perchlorates, or other oxidizing compounds combined with any organic finishing materials.

8-10 "No Smoking" signs in large letters on contrasting color background shall be conspicuously posted at all spray areas and paint storage rooms.

8-11* When maintenance operations involve the use of welding, burning, or grinding equipment, such operations shall be done under the supervision of properly designated personnel provided with adequate fire extinguishing equipment.

Chapter 9 Fixed Electrostatic Apparatus

9-1 This chapter shall apply to any equipment using electrostatically charged elements for the atomization, charging and (or) precipitation of hazardous materials for coatings on articles or for other similar purposes in which the charging or atomizing device is attached to a mechanical support and is not hand held or manipulated.

9-2 The installation and use of electrostatic spraying equipment shall conform to all other applicable chapters of this standard, and shall also conform to the requirements of this chapter.

9-3 Electrostatic apparatus and devices used in connection with coating operations shall be of listed types.

9-4 Transformers, high voltage supplies, control apparatus, and all other electrical portions of the equipment, with the exception of high voltage grids, electrodes and electrostatic atomizing heads and their connections, shall be located outside of the spray area as defined in Chapter 1, or shall otherwise conform to the requirements of Chapter 4 of this standard.

9-5 Electrodes and electrostatic atomizing heads shall be adequately supported in permanent locations and shall be effectively insulated from ground. Electrodes and electrostatic atomizing heads which are permanently attached to their bases, supports, or reciprocators, shall be deemed to comply with this section. Insulators shall be non-porous. Fine wire elements when used shall be under tension at all times and be of unkinked hardened steel or material of comparable strength.

9-6 High voltage leads shall be properly insulated and protected from mechanical injury or exposure to destructive chemicals. Any exposed element at high voltage shall be effectively and permanently supported on suitable insulators and shall be effectively guarded against accidental contact or grounding.

9-7 A safe distance shall be maintained between goods being painted and electrodes or electrostatic atomizing heads or conductors of at least twice the sparking distance. A suitable sign indicating this safe distance shall be conspicuously posted near the assembly.

9-8 Goods being coated using this process shall be supported on conveyors or hangers. The conveyors or hangers shall be so arranged as to assure that the parts being coated are electrically connected to

ground, with a resistance of 1 megohm or less, and to maintain safe distances between the goods and the electrodes or electrostatic atomizing heads at all times. Goods shall be supported to prevent swinging or movement which would reduce the clearance to less than that specified in Section 9-7.

9-9 Electrostatic apparatus shall be equipped with automatic means which will rapidly de-energize the high voltage elements under any of the following conditions:

(a) Stoppage of ventilating fans or failure of ventilating equipment from any cause.

(b) Stoppage of the conveyor carrying goods through the high voltage field.

(c) Occurrence of a ground or excessive current leakage at any point on the high voltage system.

(d) De-energizing the primary of the power supply.

(e) Reduction of clearance below that specified in Section 9-7.

9-10 Safeguards such as adequate booths, fencing, railings or other means shall be so placed about the equipment or incorporated therein that they, either by their location or character or both, assure that a safe isolation of the process is maintained from plant storage or personnel.

9-11 All electrically conductive objects in the spray area, except those objects required by the process to be at high voltage, shall be adequately grounded. This requirement shall apply to paint containers, wash cans, guards and any other electrically conductive objects or devices in the area. The equipment shall carry a prominent permanently installed warning regarding the necessity for this grounding feature.

9-12 Signs designating the process zone as dangerous as regards fire and accident shall be conspicuously posted.

9-13 All insulators shall be kept clean and dry.

9-14 The spray area shall be so ventilated as to ensure safe conditions from a fire and health standpoint. (*See NFPA 91, Standard for Blower and Exhaust Systems.*)

9-15 All areas used for spraying, including the interior of the booth, shall be protected by automatic sprinklers where this protection is available. Where this protection is not available, other approved automatic extinguishing equipment shall be provided.

Chapter 10 Electrostatic Hand Spraying Equipment

10-1 This chapter shall apply to any equipment using electrostatically charged elements for the atomization, charging and (or) precipitation of materials for coatings on articles, or for other similar purposes in which the atomizing device is hand held and manipulated during the spraying operation.

10-2 Electrostatic hand spraying equipment shall conform with the other applicable provisions of this standard and shall also conform to the provisions of this chapter.

10-3 Electrostatic hand spray apparatus and devices used in connection with coating operations shall be of listed types. The high voltage circuits shall be designed so as not to produce a spark of sufficient intensity to ignite the most hazardous of those vapor-air mixtures or powder-air mixtures likely to be encountered, nor result in appreciable shock hazard upon coming in contact with a grounded object under all normal operating conditions. (*See Article 500, NFPA 70, National Electrical Code.*) The electrostatically charged exposed elements of the hand gun shall be capable of being energized only by an actuator which also controls the coating material supply.

10-4 Transformers, high voltage supplies, control apparatus, and all other electrical portions of the equipment, with the exception of the hand gun itself and its connections to the power supply, shall be located outside of the spray area or shall otherwise conform to the requirements of Chapter 4 of this standard.

10-5 The handle of the spray gun shall be electrically connected to ground by a metallic connection and be so constructed that the operator in normal operating position is in intimate electrical contact with the grounded handle to prevent buildup of a static charge on the operator's body. Signs indicating the necessity for grounding other persons entering the spray area shall be conspicuously posted.

10-6 All electrically conductive objects in the spray area shall be adequately grounded. This requirement shall apply to paint containers, wash cans and any other electrically conductive objects or devices in the area. The equipment shall carry a prominent permanently installed warning regarding the necessity for this grounding feature.

10-7 Objects being coated shall be maintained in electrical contact with the conveyor or other grounded support. Hooks shall be regularly cleaned to assure adequate grounding of 1 megohm or lower resistance. Areas of contact shall be sharp points or knife edges where possible. Points of support of the object shall be concealed from random spray, where feasible, and where the objects being sprayed are supported from a conveyor, the point of attachment to the conveyor shall be so located as not to collect spray material during normal operation.

Chapter 11 Drying, Curing or Fusion Apparatus

11-1 Drying, curing or fusion apparatus in connection with spray application of flammable and combustible coatings shall conform to NFPA 86A, *Standard for Ovens and Furnaces*, where applicable and shall also conform to the following:

11-2 Spray booths, rooms or other enclosures used for spraying operations shall not alternately be used for the purpose of drying by any arrangement which will cause a substantial increase in the surface temperature of the spray booth, room or enclosure. The susceptibility to spontaneous heating and ignition of overspray residue may be greatly increased at temperatures above normal. Hence the use of hot air drying in a space which has been used for spray application is apt to create a severe hazard.

11-3 Except as specifically provided in Section 11-4, drying, curing or fusion units utilizing a heating system having open flames or which may produce sparks shall not be installed in a spray area as defined in Chapter 1, but may be installed adjacent thereto when equipped with an interlocked ventilating system arranged to:

- (a) Thoroughly ventilate the drying space before heating system can be started;
- (b) Maintain a safe atmosphere at any source of ignition;
- (c) Automatically shut down heating system in the event of failure of the ventilating system.

11-4 Automobile refinishing spray booths or enclosures, otherwise installed and maintained in full conformity with this standard, may alternately be used for drying with portable electrical infrared drying apparatus but only when conforming with the following:

- (a) Interior (especially floors) of spray enclosures shall be kept free of overspray deposits.
- (b) During spray operations, the drying apparatus and electrical connections and wiring thereto shall not be located within spray enclosure nor in any other location where spray residue may be deposited thereon.

(c) Spraying apparatus, drying apparatus, and ventilating system of spray enclosure shall be equipped with suitable interlocks so arranged that:

1. Spraying apparatus cannot be operated while drying apparatus is inside spray enclosure.

2. Spray enclosure will be purged of spray vapors for a period of not less than 3 minutes before drying apparatus can be energized.

3. Ventilating system will maintain a safe atmosphere within the enclosure during the drying process and drying apparatus will automatically shut off in the event of failure of the ventilating system.

(d) All electrical wiring and equipment of drying apparatus shall conform to the applicable sections of NFPA 70, *National Electrical Code*. Only equipment of a type approved for Class I, Division 2 locations shall be located within 18 in. (46 cm) of floor level. All metallic parts of drying apparatus shall be properly electrically bonded and grounded.

(e) Drying apparatus shall contain a prominently located permanently attached warning sign indicating that ventilation shall be maintained during the drying period and spraying shall not be so conducted in the vicinity that spray will deposit on apparatus.

11-5 In powder coating processes, the powder is heated after or during application to bring about its fusion into a complete integral film. During such fusion many powders may release hazardous vapors. For this reason all fusion facilities shall be adequately ventilated to remove such vapors.

Chapter 12 Automobile Undercoating in Garages

12-1 Automobile undercoating operations in garages, conducted in areas having adequate natural or mechanical ventilation, are exempt from the requirements pertaining to spray coating operations, when (1) undercoating materials not more hazardous than kerosene (as classified by Underwriters Laboratories Inc. in respect to fire hazard rating 30-40) are used, or (2) undercoating materials using only solvents having a flash point in excess of 100°F (37.8°C) are used, and (3) no open flames are within 20 ft (6 m) while such operations are conducted.

12-2 Undercoating spray operations not conforming to the provisions of Section 12-1 shall conform to all requirements of this standard pertaining to spray finishing operations.

Chapter 13* Powder Coating

13-1 This chapter shall apply to processes in which combustible dry powders are applied. The hazards associated with combustible dusts are present in such processes to a degree depending upon the chemical composition of the material, particle size, shape and distribution. Generally coating powders are applied by means of:

- (a) Fluidized bed.
- (b) Electrostatic fluidized bed.
- (c) Powder spray guns.
- (d) Electrostatic powder spray guns.

Sections 13-2 to 13-7 are general and apply to all methods of application. Sections 13-8 to 13-10 are applicable to the specific method indicated therein.

13-2 Location. Powder coating operations shall be confined to properly designed enclosures provided with protection according to Chapter 7 of this standard and located in accordance with Section 2-2 of this standard.

13-3 Enclosures. Powder shall be effectively confined by conducting coating operations within:

- (a) Completely enclosed, adequately ventilated rooms of noncombustible construction with smooth surfaces designed to prevent accumulation of powder and to facilitate cleaning or
- (b) Adequately ventilated spray booths meeting the requirements of Sections 3-1 through 3-3, and Sections 3-6 through 3-11 of this standard, and by using effectively enclosed, adequately ventilated containers (tanks, bins, etc.) of noncombustible material.

13-4 Electrical and Other Sources of Ignition.

(a) Electrical equipment and other sources of ignition shall conform to the requirements of Chapter 4 of this standard, and Articles 500 and 502 of NFPA 70, *National Electrical Code*.

(b) When the part being coated is preheated in an oven, the controls shall be set so that the surface temperature of the part does not come within 50°F (28°C) of the autoignition temperature of the powder used.

(c) To minimize the possibility of ignition by static electrical sparks, powder transport, application, recovery equipment, work pieces and all other conductive objects shall be grounded with a resistance to ground not exceeding 1 megohm.

13-5* Ventilation.

(a) Nondeposited air-suspended powders shall be safely removed from a spray operation to a powder recovery system. Sufficient airflow shall be provided to maintain the exhaust duct at a powder concentration that will not exceed one-half the "minimum explosible concentration" (MEC) of the powder in use. [See 13-5(b) for exception.] If the MEC of the powder has not been established, then the exhaust duct powder concentration shall be maintained below 0.015 oz per cu ft (15 g/m^3). Exhaust equipment shall bear an identification plate stating the ventilation rate for which it was designed (cu ft per minute or m^3/hr).

(b) When, by design, the coating operation is conducted at an exhaust duct concentration above 50 percent MEC, listed suppression equipment shall be provided. (See NFPA 69, *Explosion Prevention Systems*.)

(c) Air exhausted from the recovery system of a powder operation shall not be recirculated as input air for that operation unless the particulate composition of the exhaust air has been returned to an acceptable safe level and installed equipment continuously monitors the exhausted air to signal the operator and to automatically shut down the operation in event the particulate removal equipment fails to maintain the air in this condition.

(d) Any enclosures of a powder coating operation (booth, recovery enclosure, etc.) which are effectively "tight" enclosures shall be provided with adequate blowout openings to safely relieve internal pressure in case of mixture ignition. (See NFPA 68, *Explosion Venting Guide*.)

(e) Ventilation for fluidized beds and electrostatic fluidized beds shall be designed to effectively prevent escape of nondeposited powder from the enclosure.

(f) Ventilation for spray booths shall be adequate to confine air-suspended powder to the booth and recovery system at all times. Average air velocity through electrostatic booth openings shall not be less than 60 ft per minute (18.3 m/min). Average air velocity through openings of nonelectrostatic booths shall not be less than 100 ft per minute (30.5 m/min).

13-6 Drying, Curing, or Fusion Equipment.

(a) The temperature of the work piece shall not come within 50°F (10°C) of the autoignition temperature of the powder.

(b) The provisions of NFPA 86A, *Standard for Ovens and Furnaces*, shall apply where applicable.

13-7 Operation and Maintenance.

(a) All portions of the work place surrounding the spray area, including horizontal surfaces such as ledges, beams, pipes, hoods, and booth floors, shall be maintained to prevent the accumulation of powder.

(b) Surfaces shall be cleaned in such manner as to avoid scattering powder or creating powder clouds. Vacuum sweeping equipment, where used, shall be of a type approved for use in hazardous locations.

(c) Care shall be exercised to prevent tramp iron or spark producing material from being introduced into the powders being applied. Magnetic and filter type separators are recommended.

(d) "No Smoking" signs in large letters on contrasting color background shall be conspicuously posted at all powder coating areas and powder storage rooms.

13-8 Fixed Electrostatic Powder Spraying Equipment. The provisions of Chapter 9 and other sections of Chapter 13 of this standard shall apply to fixed electrostatic equipment, except that electrical equipment not covered therein shall conform to Section 13-4 of this chapter.

13-9 Electrostatic Hand Powder Spraying Equipment. The provisions of Chapter 10 and other sections of Chapter 13 of this standard shall apply to electrostatic hand guns when used in powder coating, except that the high voltage circuits shall be designed so as not to produce a spark of sufficient intensity to ignite any powder-air mixtures likely to be encountered instead of the vapor-air mixtures referred to, and except that electrical equipment not covered therein shall conform to Section 13-4 of this chapter.

13-10 Electrostatic Fluidized Beds.

13-10.1 Electrostatic fluidized beds and associated equipment shall be of approved types. The high voltage circuits shall be so designed that any discharge produced when the charging electrodes of the bed are approached or contacted by a grounded object shall not be of sufficient intensity to ignite any powder air-mixture likely to be encountered, nor result in an appreciable shock hazard.

13-10.2 Transformers, power packs, control apparatus and all other electrical portions of the equipment, with the exception of the charging electrodes and their connections to the power supply, shall be located outside of the area classified as hazardous or shall otherwise conform to the requirements of Section 13-4 of this chapter.

13-10.3 All electrically conductive objects within the powder coating area shall be adequately grounded. The powder coating equipment shall carry a prominent, permanently installed warning regarding the necessity for grounding these objects.

13-10.4 Objects being coated shall be maintained in electrical contact (less than one megohm) with the conveyor or other support in order to ensure proper grounding. Hangers shall be regularly cleaned to ensure effective contact. Areas of contact shall be sharp points or knife edges where possible.

13-10.5 The electrical equipment and compressed air supplies shall be so interlocked with the ventilation system that the equipment cannot be operated unless the ventilation fans are in operation.

Chapter 14* Organic Peroxides and Plural Component Coatings

14-1 All spray operations involving the use of organic peroxides and other plural component coatings shall be conducted in spray areas protected by approved automatic sprinkler systems.

14-2 Extreme care shall be exercised at all times to prevent the contamination of organic peroxide initiators with any foreign substance. Only spray guns and related handling equipment specifically manufactured for use with organic peroxides shall be used. Separate fluid handling equipment shall be used for the resin and for the catalyst and they shall not be interchanged.

14-2.1 All wetted portions of organic peroxide handling equipment shall be constructed of stainless steel (300 series), polyethylene, Teflon® or other materials which are specifically recommended for the application.

14-2.2 Extreme care shall be exercised to prevent contamination of organic peroxides with dusts or overspray residues resulting from the sanding or spraying of finishing materials. Such mixing may result in a spontaneous fire or explosion.

14-2.3 All spilled peroxides shall be promptly removed so there are no residues. Spilled material may be absorbed by using a noncombustible absorbent and then promptly disposed of in accordance with the manufacturer's recommendation.

14-3 Organic peroxides shall be stored in a cool segregated area, preferably a detached building apart from other finishing materials. Only minimum daily requirements in proper containers shall be brought to the processing area. At the end of a day's operations any unmixed organic peroxide shall be returned to the organic peroxide storage area. This material shall not be returned to the original container. Organic peroxides shall be kept away from all sources of heat including steam pipes, radiators, open flames or sparks and solar radiation.

14-4* Extreme care shall be exercised in handling organic peroxides to avoid shock and friction which can cause decomposition and violent reaction.

14-5* Organic peroxides shall not be mixed directly with any cobalt compounds or other promoters or accelerators as violent decomposition or explosion may result. To minimize the possibility of such accidental mixing, these materials shall not be stored adjacent to each other.

14-6 Smoking shall be prohibited and "No Smoking" signs shall be prominently displayed and only nonsparking tools shall be used in any area where organic peroxides are stored, mixed or applied.

14-7 Only designated personnel trained to use and handle organic peroxides shall be permitted to use these materials.

Chapter 15* Training

15-1 All personnel involved in spray application in processes covered by this standard shall be instructed in the potential safety and health hazards, the operational, maintenance and emergency procedures required, and the importance of constant operator awareness.

15-2 Personnel required to handle or use flammable or combustible materials shall be instructed in the safe handling, storage, and use of the materials, as well as the emergency procedures that may be required.

15-3* All personnel required to enter or to work within confined or enclosed spaces shall be instructed as to the nature of the hazard involved, the necessary precautions to be taken, and in the use of protective and emergency equipment required.

15-4 All personnel shall be instructed in the proper use, maintenance, and storage of all emergency, safety, or personal protective equipment that they may be required to use in their normal work performance.

15-5 Some appropriate form of documentation shall be employed to record the type and date of training provided to each individual involved in these processes.

Appendix A

This Appendix is not part of the requirements of this NFPA document, but is included for information purposes only.

The following Appendix material is provided to explain basic principles and give loss experience.

A-1 Scope and Definitions — General.

The safety of life and property from fire or explosion as a result of spray applications of flammable and combustible paints and finishes varies depending upon the arrangement and operation of a particular installation.

The principal hazards of spray application operations originate from flammable or combustible liquids or powders and their vapors or mists and from highly combustible residues or powders.

Properly constructed spray booths, with adequate mechanical ventilation, may be used to discharge vapors or powder to a safe location and reduce the possibility of an explosion. In like manner, the accumulation of overspray residues, many of which are not only highly combustible but subject to spontaneous ignition, can be controlled.

The elimination of all sources of ignition in areas where flammable or combustible liquids, vapors, mists or combustible residues are present, together with constant supervision and maintenance, are essential to the safe operations of spraying.

The human element necessitates careful consideration of the location of the operations and the installation of extinguishing equipment so that if a fire does occur, the possibility of its spread to other property will be reduced and the probability of damage to other property by extinguishing agents will be minimized.

A-1-1 Scope.

A-1-1.3(a) Outdoor Application. This standard does not cover the outdoor spray application to buildings, bridges, tanks or similar structures. With such occasional applications, overspray deposits are not likely to create a hazardous condition and the space in which flammable vapor-air mixtures may be present is limited because of atmospheric dilution.

A-1-1.3(b) Indoor Application. The occasional operation of small portable spraying apparatus for spraying building interiors and similar uses is such that hazardous accumulations of overspray deposits are not likely to occur. Such operations are not within the scope of this standard.

When building or maintenance spraying is considered outside the scope of this standard by the authority having jurisdiction because of the infrequency of application, the following safeguards should be observed:

(a) Adequate ventilation should be provided at all times when conducting indoor spraying operations, particularly in small enclosures.

(b) Spray should not be conducted in the vicinity of open flames or other sources of ignition.

(c) Cans or other containers of paints, thinners or other protective coatings should be kept tightly closed at all times when they are not required to be open to replenish the supply of such material at the place of application.

(d) Oily or paint-laden rags or waste should be promptly disposed of at the end of each day's operations because of the danger of spontaneous ignition. The same fundamental requirements of cleanliness should be observed as are required in the spray application of coating materials in industrial processes.

A-1-1.4 Waterborne Coatings. Flammable and combustible application of finishing materials contemplated by this standard do not ordinarily include water solutions nor water-emulsion liquids. Certain water-emulsion liquids, however, although involving little or no hazard in the liquid state, may leave highly combustible residues upon evaporation of the liquid carrier. The provisions of this standard for minimizing the hazards of combustible residues should be followed irrespective of the characteristics of the liquid carrier.

A-1-2 Definitions.

Spray Area. The authority having jurisdiction may, for the purpose of this standard, define the limits of the spray area in any specific case.

The spray area in the vicinity of spraying operations will necessarily vary with the design and arrangement of equipment and method of operation.

When spraying operations are strictly confined to predetermined spaces which are provided with adequate and reliable ventilation, such as a properly constructed spray booth, the spray area should ordinarily not extend beyond the booth enclosure.

When, however, spraying operations are not confined to adequately ventilated spaces, the spray area may extend throughout the entire room containing spraying operations.

A-2 Location of Spray Application Operations.

General. Fires in spray areas develop rapidly with large quantities of heat and smoke generated. Therefore, facilities should be located so that there is adequate egress for operating and maintenance personnel and access for fire fighting operations.

Factories. In factories conducting extensive spray application operations, it is desirable that the process be confined to a building detached or separated by fire walls from storage or other processing buildings wherever practical.

The adaptation of assembly lines or conveyor systems to spray processes may present some additional problems of fire hazard segregation. If conveyor systems extend to or from a detached building, a sprinklered noncombustible connecting passageway may be advisable. If conveyor systems go through floors, the floor openings should be surrounded by deep draft curtains on the ceiling beneath and may be provided with automatically controlled high velocity spray nozzles arranged to set up a counter draft. If conveyor systems pierce fire walls, it is difficult to arrange automatic fire doors to protect the openings in a practical and reliable manner. In some instances, such openings have been provided with noncombustible tunnels extending on each side of fire wall with tunnels protected by specially designed automatic spray or sprinkler systems.

Rooms containing spray application operations should preferably be separated from other occupancies by tight-fitting partitions. In sprinklered buildings, rooms of extensive area having spray finishing operations should be provided with noncombustible draft curtains, extending downward from ceilings as far as practical but not less than 18 in. (46 cm). Such curtains aid in preventing the opening of sprinklers outside the area enclosed by curtains and tend to confine the discharge of water to the immediate area of the fire.

Where spray application operations are located on upper floors of buildings, they should not be located immediately over high concentrations of damageable goods and positive provisions should be made for the waterproofing and drainage of the floor of the spray area.

Waterproof floors shall be arranged to drain to the outside of building, internal drains or other suitable place. Properly designed and guarded drains or scuppers of sufficient number and size to dispose of all surplus water likely to be discharged by automatic sprinklers over the waterproof area should be provided, conforming to NFPA 92M, *Manual for Waterproofing and Draining of Floors*.

Spray application operations involving flammable or combustible liquids should not be located in any basement area.

A-3 Spray Booths and Spray Rooms — General. Spray booths may be of a wide variety of shapes and sizes to accommodate the various industrial applications of spray finishing. Without the use of a spray booth, the spray area as defined in Chapter 1 may be of considerable magnitude with all of the requirements of this standard for a spray area applicable thereto. It is important that only equipment suitable for specific purposes be utilized in connection with the handling and application of flammable or combustible liquids or powders.

A-4 Electrical and Other Sources of Ignition.

A-4-1 Exceptions. It will be observed that because of the requirements of special safeguards, electrostatic apparatus, drying, curing or fusion apparatus and automobile undercoating spray operations in garages are covered in separate chapters.

A-4-2 Sources of Ignition Other than Electrical. It is obvious that there should be no open flames or spark producing equipment in any area where, because of inadequate ventilation, explosive vapor-air mixtures or mists are present. It is equally obvious that no open flames or spark producing equipment should be so located that there will be deposited on them highly combustible spray residues. Because some residues may be ignited at very low temperatures, additional consideration must be given to operating temperatures of equipment subject to residue deposits. Many deposits may be ignited at temperatures produced by low pressure steam pipes or by incandescent light globes, even those of explosionproof type.

A-4-5 Electrical Equipment in Spray Areas Subject to Residue Accumulations. From Section 4-5, it will be noted, that in general, electrical equipment is not permitted inside any spray booth, in the exhaust duct from a spray booth, in the entrained air of an exhaust system from a spraying operation nor in the direct path of spray, unless such equipment is specifically listed for both readily ignitable deposits and flammable vapor.

A-4-6 Electrical Equipment in Spray Areas Not Subject to Residue Accumulation. The determination of the extent of hazardous areas involved in spray application requires an understanding of the dual hazards of flammable vapors, mists or powders and highly combustible deposits applied to each individual installation.

From Section 4-6, it will be noted that when electrical equipment is installed in locations not subject to deposits of combustible residues

but, due to inadequate ventilation, is subject to explosive concentrations of flammable vapors or mists, only approved explosionproof, or other type approved for Class I, Division 1 locations, equipment is permitted.

A-4-7 Electrical Equipment Adjacent to Spray Areas. When spray areas containing dangerous quantities of flammable or combustible vapors, mists, residues, dusts or deposits under normal operation have been determined, the adjacent unpartitioned areas, which are safe under normal operating conditions, but which may become dangerous due to accident or careless operation, should be given consideration. Equipment known to produce sparks or flames under normal operating conditions should not be installed in these adjacent unpartitioned areas.

When spraying operations are confined to adequately ventilated spray booths or rooms, there should be no dangerous concentrations of flammable vapors, mists, or dusts, nor deposits of combustible residues outside of the spray booth under normal operating conditions.

In the interest of safety, however, it will be noted that unless separated by partitions, the area within certain distances of the hazardous spray area, depending upon the arrangement, is considered Division 2; that is, it should contain no equipment which produces sparks under normal operation. Furthermore, within this distance, electric lamps must be enclosed to prevent hot particles falling on freshly painted stock or other readily ignitable material and, if subject to mechanical injury, must be properly guarded.

A-4-8 Fixed Lighting. Even though it is contemplated that areas adjacent to spray booths (particularly where coating material stocks are located) will be provided with ventilation sufficient to prevent the presence of flammable vapors or deposits, it is nevertheless advisable that electric lamps be totally enclosed to prevent the falling of hot particles in any area where there may be freshly painted stock, accidentally spilled flammable or combustible materials or readily ignitable refuse, or flammable or combustible liquid containers accidentally left open.

Where electric lamps are in areas subject to atmospheres of flammable vapor, lamp globes should be replaced when electricity is off, otherwise there may be a spark from this source.

A-4-9 Portable Lighting. Sufficient lighting for coating operations, booth cleaning and booth repair work should be provided at the time the equipment is installed in order to avoid the use of "temporary" or "emergency" lamps connected to ordinary extension cords in this area. A satisfactory and practical method of lighting is the use

of ¼-in. (0.6-cm) thick wired or tempered glass panels in the top or sides of spray booths with electrical light fixtures outside the booth, hence not in the direct path of the spray.

A-4-9.1 Static Charges. In order to prevent sparks from the accumulation of static electricity, all electrically conductive objects including metal parts of spray booths, exhaust ducts, piping systems conveying flammable or combustible liquids, paint, or solvent tanks or canisters should be properly electrically grounded.

A-4-9.2 Static Charges on Airless Systems. "Airless" spray painting employing high fluid pressures can produce static electricity which may cause a spark. Therefore, the airless spray gun and any conductive object being sprayed, including containers into which the flow from the gun is directed, should be properly electrically grounded. This can be done by either using a hose that contains an electrical conductor, or attaching a properly grounded static wire to the spray gun and electrically grounding the object being sprayed.

A-5 Ventilation — General. Adequate mechanical ventilation, together with vapors or mists of flammable or combustible materials should not be underestimated, nor should they be viewed with such concern as to assume they cannot be controlled by proper engineering.

A-5-2.1 Liquid Coating Systems — General, LFL Determination. Paints, varnishes, lacquers and other coating materials may contain volatile flammable solvents; in addition, such solvents may be added as "thinners." Such solvents, when exposed to the atmosphere, give off vapors which mix with the surrounding air and, if the concentration of these vapors reaches as much as approximately one percent, an explosion may occur, if at the same time a spark or other source of ignition is present.

Spray applications using only combustible liquids with relatively high flash points, although less likely to produce flammable atmospheres than those using low flash point flammable liquids, may nevertheless result in mists which are capable of propagating a flame somewhat similar to combustible solids in dust explosions.

Theoretical considerations may assist in hazard evaluation in some instances. For example, 1 liquid gal (3.8 L) of the average flammable solvent will occupy approximately 23 cu ft (0.6 m³) when evaporated into vapor at average room temperature. Therefore, if 1 gal (3.8 L) of liquid solvent is completely evaporated and thoroughly mixed with the surrounding air of an enclosure, the enclosure must have a volume of more than 2,300 cu ft (65 m³) to avoid a flammable mix-

ture if the lower limit of the flammable range of the solvent is one percent in air. This is a conservative number; almost all of the solvents used in spray finishing have an LFL higher than one percent. In attempting to use such theoretical considerations caution should be exercised to prevent erroneous conclusions. When flammable liquids are sprayed, the area in the direct path of the spray will exceed the LFL. Vapors from most flammable solvents are heavier than air and small quantities of vapor may form a flammable mixture at low unventilated spaces in the vicinity of or even remote from the point of evaporation before they so mix with the full volume of available air by natural diffusion that the mixture becomes too "lean" to burn. When flammable liquid is sprayed, the rate of evaporation is greatly increased so that the lower flammable limit is quickly reached. For these reasons, a safety factor of 4 to 1 has been traditionally used and the ventilation requirement rounded off to 10,000 cu ft per gal ($74.5 \text{ m}^3/\text{L}$) evaporated at maximum flow rate of the spray gun.

Adequate mechanical ventilation throughout all areas where flammable vapors or mists may be present is essential to prevent the formation of flammable mixtures. The volume of air movement necessary will obviously vary with the arrangement of spraying operations, the amount of spray material used in a given length of time and the rate of evaporation of the particular solvent.

A-5-2.1(a) Spray Booths. In addition to maintaining the enclosure below the LFL, it is also necessary to confine overspray.

When spray booths are provided with adequate ventilation, booths may be so located with respect to the source of their makeup air replenishment that air in the entire space about the booth moves toward spray booth exhausts and "dead air pockets" are minimized. This may eliminate the need for mechanical ventilation in areas adjacent to the booth. With moderately uniform air movement throughout the space about a spray booth, an air change of once every 3 to 5 minutes should be sufficient to prevent the formation in this area of flammable vapors under ordinary conditions.

Where spraying is conducted inside a spray booth using conventional spray equipment, an average air velocity of approximately 100 linear ft per minute (30.5 m/min) should contain overspray. Under these conditions the ventilating fan capacity in cu ft per minute (m^3/min) must then be 100 ft per minute (30.5 m/min) times the total area of booth openings, such as frontal area, conveyor openings, etc., in sq ft (m^2). Where spraying operations are extensive or where special purpose spray booths such as canopy or down-draft spray booths are used, additional ventilation may be necessary.

A lower rate of exhaust ventilation may be employed in electrostatic spraying and other efficient coating methods which produce low volumes of overspray and solvent vapors. Generally, a rate of exhaust of approximately 60 linear ft per minute (18.3 m/min) will maintain the atmosphere well below the explosive limits in these operations because the volume of coating material being applied is normally less than in other types of spraying, resulting in a lower volume of solvent vapors released and overspray created.

A-5-2.1(b) Spray Rooms and Open Spraying.

Spray rooms should be provided with exhaust system openings near floor level since most solvent vapors are heavier than air. System design should provide uniform air movement to sweep vapors to exhaust openings. While 10,000 cu ft of air per gal (74.5 m³/L) of solvent evaporated is adequate to maintain solvent vapor below the LFL, additional ventilation may be necessary due to the greater toxicity of some solvents. The authority having jurisdiction should be consulted.

Noncombustible false ceilings or partitions may be used to improve ventilation of spray rooms. False ceilings or partitions extending to the boundaries of the hazardous area will permit the installation of nonsparking electrical equipment above the ceilings, subject to the authority having jurisdiction.

Open Spraying. Where large objects such as railway cars are being sprayed, it is frequently necessary to provide multiple air inlets and exhaust in the proximity of all portions of the object, simultaneously producing a rather high air velocity at all points where spray may be applied. In many cases this has been accomplished by strategically locating air makeup ducts overhead and exhausting air at the floor level below the application point.

A-5-4 Makeup Air. Since the air exhausted from spray applications is normally contaminated and can only be recirculated under rigidly controlled conditions, consideration should be given to the heating of incoming air in cold weather. An efficient and satisfactory method of heating rooms containing several spray booths is to strategically locate air intakes so as to provide a uniform sweep of air throughout the entire room towards exhaust fans and provide each air intake with a safe heating arrangement.

In some heating arrangements, forced makeup or replacement air directly compensating for the contaminated air exhausted from spray application is used in place of, or to augment, general area heating and ventilation.

With the many variables which may be encountered in heating and ventilating systems, it is generally advisable to engage the services of a qualified ventilating engineer to obtain a safe and efficient installation.

The features which should be considered include (a) the location of heat sources to conform to Chapter 4; (b) the location of air intakes to prevent recirculating contaminated air and the equipping of air intakes with appropriate screens or filters; (c) automatic temperature and proportioning controls, including an independent excess temperature limit control; (d) an interlocking safety system associated with the heater to automatically provide for its safe ignition and to minimize the hazards which might result from failure of proper cycle of operations, proper pressure of fuel supply, ventilation and electrical power; (e) an interlocking of the spray booth exhaust and air replacement system to ensure that spray booth exhaust will be running during the operation of air replacement system in order to provide a proper balance of supply and replacement air; and (f) in the case of direct-fired units, the avoidance of concentrations of unburned fuel or products of combustion that would be injurious to personnel if inhaled.

A-5-8 Exhaust Systems. Exhaust systems should be individually ducted to the outside. Where treatment of exhaust is necessary to satisfy EPA requirements or where energy conservation measures are used, this may not be practical. Manifolding booth exhaust systems increase the fire hazard. A fire starting in one booth may spread through the exhaust system and involve other booths. Heat exchangers are sometimes used to preheat the exhaust before it enters the incinerator. This may result in spontaneous ignition of residue accumulations on heat exchanger surfaces.

A-5-16 Additional Ventilation. If there are other operations which give off flammable vapors in the vicinity of a spray application operation, these should be provided with independent mechanical ventilation.

A-7 Protection — General. As indicated in Chapter 6 of the standard, it is inadvisable to keep large quantities of flammable or combustible liquids in areas which expose personnel or important property to injury or loss. The primary reason for this requirement is that fires in flammable liquids are difficult to extinguish by usual methods and if large quantities are involved, they may spread the fire by flowing over large areas.

For fires in small amounts of flammable or combustible liquids, hand extinguishers, or large extinguishers on wheels especially

designed for such fires, are effective. If large quantities of liquids are to be protected, suitable automatic equipment should be provided and special attention should be given to proper dikes, curbs and drains to prevent the flow to other property.

For the extinguishment of fire in spray residues, hand fire extinguishers suitable for fire in ordinary combustibles or hose streams are effective.

A-7-2 Automatic Sprinkler Protection. Spray application operations should only be located in buildings completely protected by an approved system of automatic sprinklers. If located in unsprinklered buildings, sprinklers should be installed to protect spray coating processes where practical. Because of the rapid intensity of fires which may result from spray operations, the available water should be ample to supply simultaneously all sprinkler heads likely to open in one fire without depleting the available water for use with hose streams. Noncombustible draft curtains may be used to limit the number of sprinklers which may open in one fire.

Even when areas adjacent to coating operations are considered under reasonably positive fire control by adequate automatic sprinkler protection, large damage is possible if operations are conducted on floors above those containing contents highly susceptible to water damage. The waterproofing and drainage of spray room floors may assist in reducing water damage on floors below. The proper drainage of the large volume of water frequently necessary to extinguish spray finishing room fires often presents considerable difficulty.

A-7-4 Spray Booths and Spray Rooms. Automatic sprinklers in spray areas, including the interior of spray booths and exhaust ducts, should be on a wet pipe, preaction or deluge system in order that water may be placed on a fire in the shortest possible time. Automatic sprinklers in spray booths and exhaust ducts should be of the lowest practical temperature rating. Sprinklers outside the booth at ceiling level should be high temperature rated, 286°F (141°C). The delay in application of water with ordinary dry pipe sprinklers may permit a fire to spread so rapidly that final extinguishment is difficult without large resulting damage.

The location of the sprinkler heads inside spray booths should be selected with care in order to avoid heads being placed in the direct path of spray and yet afford protection for the entire booth interior. When in the direct path of spray even one day's operation may result in deposits on the sprinkler head which insulate the fusible link or choke open head orifices to the extent that sprinklers cannot operate efficiently.

Automatic sprinklers should be located so that areas subject to substantial accumulations of overspray residue are protected. Generally, sprinklers are located no more than 4 ft (1.2 m) from side walls of booths and rooms and from dry overspray collectors (where applicable). Sprinklers in booths or rooms should be on extra hazard occupancy spacing of 90 sq ft (8.4 m²).

Sprinklers or sprinkler systems protecting stacks or ducts should be automatic and of a type not subject to freezing. Dry pendent sprinklers are often used inside buildings near exhaust duct penetrations to the outside. Nonfreeze or dry type sprinkler systems are often used for ducts outside buildings. Sprinklers should be spaced no more than 12 ft (3.7 m) apart in the duct for adequate protection.

All sprinklers in spray areas should be controlled by an accessible control valve, preferably an OS & Y valve.

A-7-8 Automatic Powder Spray Booths. During the first few seconds in the development of a fire in a dry powder spray booth the following observations may be made:

Airborne powder in the spray plumes of the gun(s) burns vigorously so long as the gun feeder(s) continues to supply fuel. Flames from about 2 to 6 ft (0.6 to 1.8 m) in length may extend from the guns but do not intrude into the gun interiors.

These flames do not extend into the exhaust ductwork if adequate airflow has been provided to maintain maximum powder concentration in the exhaust stream below the MEC.

These flames are extinguished almost instantly if their supply of airborne fuel is interrupted by shutting down the gun feeders.

Deposits of oversprayed powder which have accumulated on spray enclosure interior surfaces are not readily ignited, even by direct exposure to flames for a few seconds.

If a fire in a powder spray booth has been sustained for an appreciable period of time (10 to 60 second delays have been observed), a propagation sequence involving the following steps may be recognized:

Heat exposure effects of the fire, acting upon the deposits of overspray powder which have accumulated on the interior surfaces of the spray enclosure, will modify a layer on the surface of the deposits to form an extremely fragile, tissue-thin structure of powder grains that have been softened only enough to adhere to adjacent grains but not enough to flow together and form a film. This is called a sintered structure.

In response to the effects of vibration and rapidly fluctuating temperature (flickering of flames, etc.) this structure will break into