

---

---

**Tools for pressing — Guide pillars —**  
**Part 1:**  
**Types**

*Outilsage de presse — Colonnes de guidage —*  
*Partie 1: Types*



STANDARDSISO.COM : Click to view the full PDF of ISO 9182-1:2013



**COPYRIGHT PROTECTED DOCUMENT**

© ISO 2013

All rights reserved. Unless otherwise specified, no part of this publication may be reproduced or utilized otherwise in any form or by any means, electronic or mechanical, including photocopying, or posting on the internet or an intranet, without prior written permission. Permission can be requested from either ISO at the address below or ISO's member body in the country of the requester.

ISO copyright office  
Case postale 56 • CH-1211 Geneva 20  
Tel. + 41 22 749 01 11  
Fax + 41 22 749 09 47  
E-mail [copyright@iso.org](mailto:copyright@iso.org)  
Web [www.iso.org](http://www.iso.org)

Published in Switzerland

Contents

	Page
Foreword.....	iv
1     Scope .....	1
2     Types, methods of mounting, and dimensions .....	1

STANDARDSISO.COM : Click to view the full PDF of ISO 9182-1:2013

## Foreword

ISO (the International Organization for Standardization) is a worldwide federation of national standards bodies (ISO member bodies). The work of preparing International Standards is normally carried out through ISO technical committees. Each member body interested in a subject for which a technical committee has been established has the right to be represented on that committee. International organizations, governmental and non-governmental, in liaison with ISO, also take part in the work. ISO collaborates closely with the International Electrotechnical Commission (IEC) on all matters of electrotechnical standardization.

The procedures used to develop this document and those intended for its further maintenance are described in the ISO/IEC Directives, Part 1. In particular the different approval criteria needed for the different types of ISO documents should be noted. This document was drafted in accordance with the editorial rules of the ISO/IEC Directives, Part 2 (see [www.iso.org/directives](http://www.iso.org/directives)).

Attention is drawn to the possibility that some of the elements of this document may be the subject of patent rights. ISO shall not be held responsible for identifying any or all such patent rights. Details of any patent rights identified during the development of the document will be in the Introduction and/or on the ISO list of patent declarations received (see [www.iso.org/patents](http://www.iso.org/patents)).

Any trade name used in this document is information given for the convenience of users and does not constitute an endorsement.

For an explanation on the meaning of ISO specific terms and expressions related to conformity assessment, as well as information about ISO's adherence to the WTO principles in the Technical Barriers to Trade (TBT) see the following URL: Foreword - Supplementary information

The committee responsible for this document is ISO/TC 29, *Small tools*, Subcommittee SC 8, *Tools for pressing and moulding*.

This second edition results from the reinstatement of ISO 9182-1:1992 which was withdrawn in 2007 and with which it is technically identical.

ISO 9182 consists of the following parts, under the general title *Tools for pressing — Guide pillars*:

- *Part 1: Types*
- *Part 2: Type A, straight pillars*
- *Part 3: Type B, end-locking pillars*
- *Part 4: Type C, pillars with taper lead and bush*
- *Part 5: Type D, end-locking pillars with flange*

# Tools for pressing — Guide pillars —

## Part 1: Types

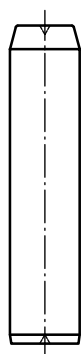
### 1 Scope

This part of ISO 9182 illustrates four main types of guide pillars and their methods of mounting.

### 2 Types, methods of mounting, and dimensions

The guide pillars represented in [Figure 1](#) illustrate the types only; these representations shall not influence the manufacturer's design.

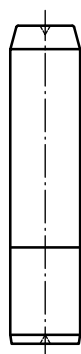
The detailed dimensions of each type of guide pillar are given in the appropriate part of ISO 9182. [Figure 2](#) shows an alternative form for guide pillar end.



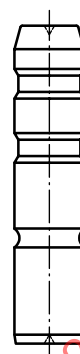
**Type A1** — Straight guide pillars



**Type A2** — Straight guide pillars with end-locking and locking ring



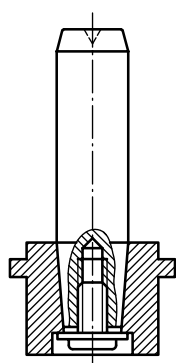
**Type B1** — End-locking guide pillars



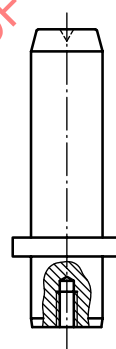
**Type B2** — End-locking guide pillars with lubricating grooves

**Type A** — Straight guide pillars (see ISO 9182-2)

**Type B** — End-locking guide pillars (see ISO 9182-3)

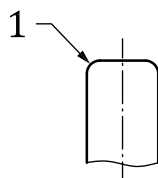


**Type C** — Guide pillars with taper lead and bush (see ISO 9182-4)



**Type D** — End-locking guide pillars with flange (see ISO 9182-5)

**Figure 1** — Guide pillar types



**Key**

1 radius

**Figure 2** — Alternative form for guide pillar end